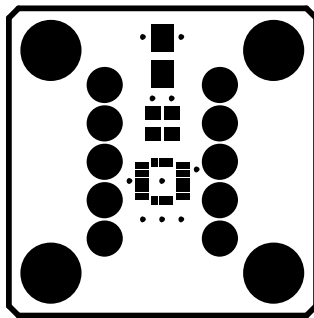
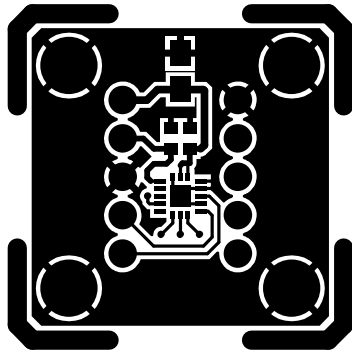


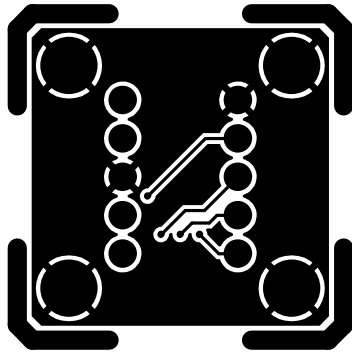
ADXL350Z
SILKSCREEN LAYER 1 (TOP)



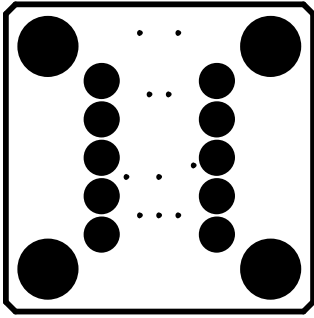
ADXL350Z
SOLDERMASK LAYER 1 (TOP)



ADXL350Z
LAYER 1 (TOP)

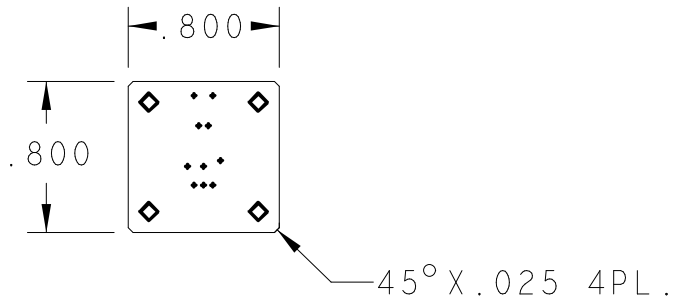


ADXL320Σ
LAYER 5 (BOTTOM)



SOLDERMASK LAYER 2 (BOTTOM) ADXL320Z

PRIMARY SIDE VIEW



NOTES :

1. PCB SPEC: PCB SHALL BE MANUFACTURED TO MEET ALL SPECIFICATIONS AND REQUIREMENTS OF IPC-6011 AND IPC-6012, CLASS 2 EXCEPT AS NOTED.
2. MATERIAL: EPOXY GLASS, TYPE FR4, 0.062" THICK, 1 OZ CU PLATE BOTH SIDES, DK 4.3-4.5
3. SOLDER MASK: COLOR GREEN, PHOTOIMAGEABLE TYPE PER IPC SM-840, TYPE B, CLASS 2. APPLY IMMERSION GOLD (NIG) OR SILVER.
4. FINISH: WHITE TIN IS ACCEPTABLE.
5. SILKSCREEN: APPLY WHITE EPOXY INK TO COMPONENT SIDE OF PCB. ADD VENDOR ID AND DATE CODE TO SILKSCREEN TOP.
6. DRILL SIZES: HOLES SIZES IN DRILL LEGEND REPRESENT FINISHED SIZE AFTER PLATING. MIN THICKNESS TO BE 0.0015".
7. PHOTOTOOLS: ON FINISHED PCB'S, COPPER ETCH IS TO BE WITHIN +/- 0.0005" OF PHOTOTOOL DATA.

DRILL CHART: TOP to BOTTOM			
ALL UNITS ARE IN MILS			
SYMBOL	SIZE	FINISH	QTY
•	10	PLATED	10
○	43	PLATED	10
◇	120	PLATED	4

					NAME	ADX350 Evaluation Board				
					DWN/DESS	DATE	CHK/VER	DATE	APPD/APP	DATE
					GL	2017-11-03	DR	2017-11-03	DR	2017-11-03
					A	CODE	301-394			
					SCALE/ECHELLE	INTEMPCO CONTROLS LTD		SHEET		OF
					1:1	LES CONTROLES INTEMPCO LTEE		FEUILLE		1 DE 1
LTR/LET	REVISION	DATE	DWN/DESS	CHK/VER						

CE DESSIN ET SES SPECIFICATIONS SONT LA PROPRIETE DE LES CONTROLES INTEMPCO LTEE. IL NE PEUVENT ETRE PRETES, TRANSFERES, REPRODUITS, COPIES OU SERVIR A LA FABRICATION, L'ACHAT OU LA VENTE D'ARTICLES SANS LE CONSENTEMENT ECRIT DE LES CONTROLES INTEMPCO LTEE.
 THIS DRAWING AND SPECIFICATIONS HEREIN ARE THE PROPERTY OF INTEMPCO CONTROLS LTD AND MUST NOT BE LOANED OR OTHERWISE TRANSFERRED TO ANY THIRD PARTY OR REPRODUCED, COPIED OR USED IN CONNECTION WITH THE MANUFACTURE PURCHASE OR SALE OF ITEMS WITHOUT WRITTEN CONSENT OF INTEMPCO CONTROLS LTD.