

# Analog Devices Welcomes Hittite Microwave Corporation

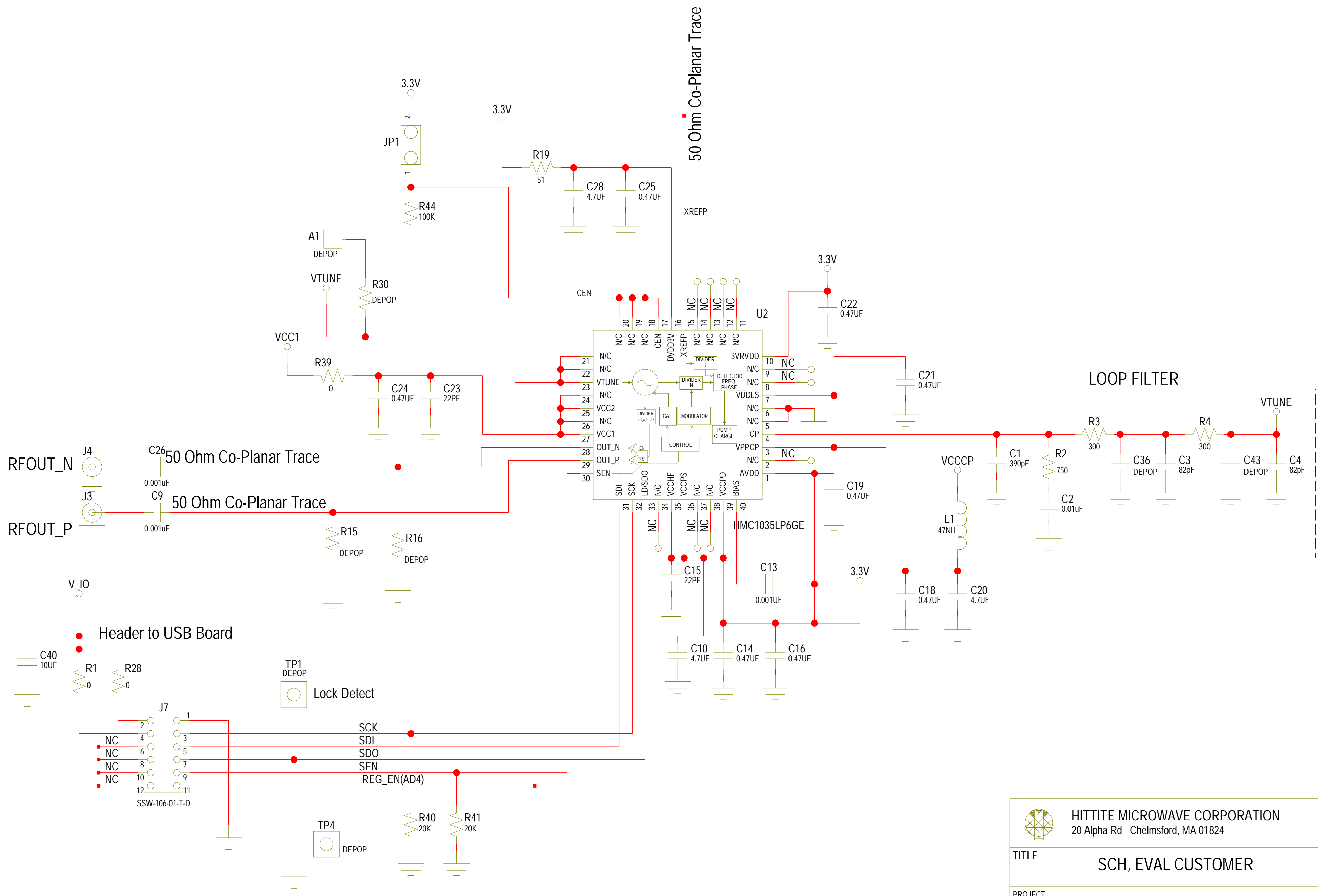
NO CONTENT ON THE ATTACHED DOCUMENT HAS CHANGED




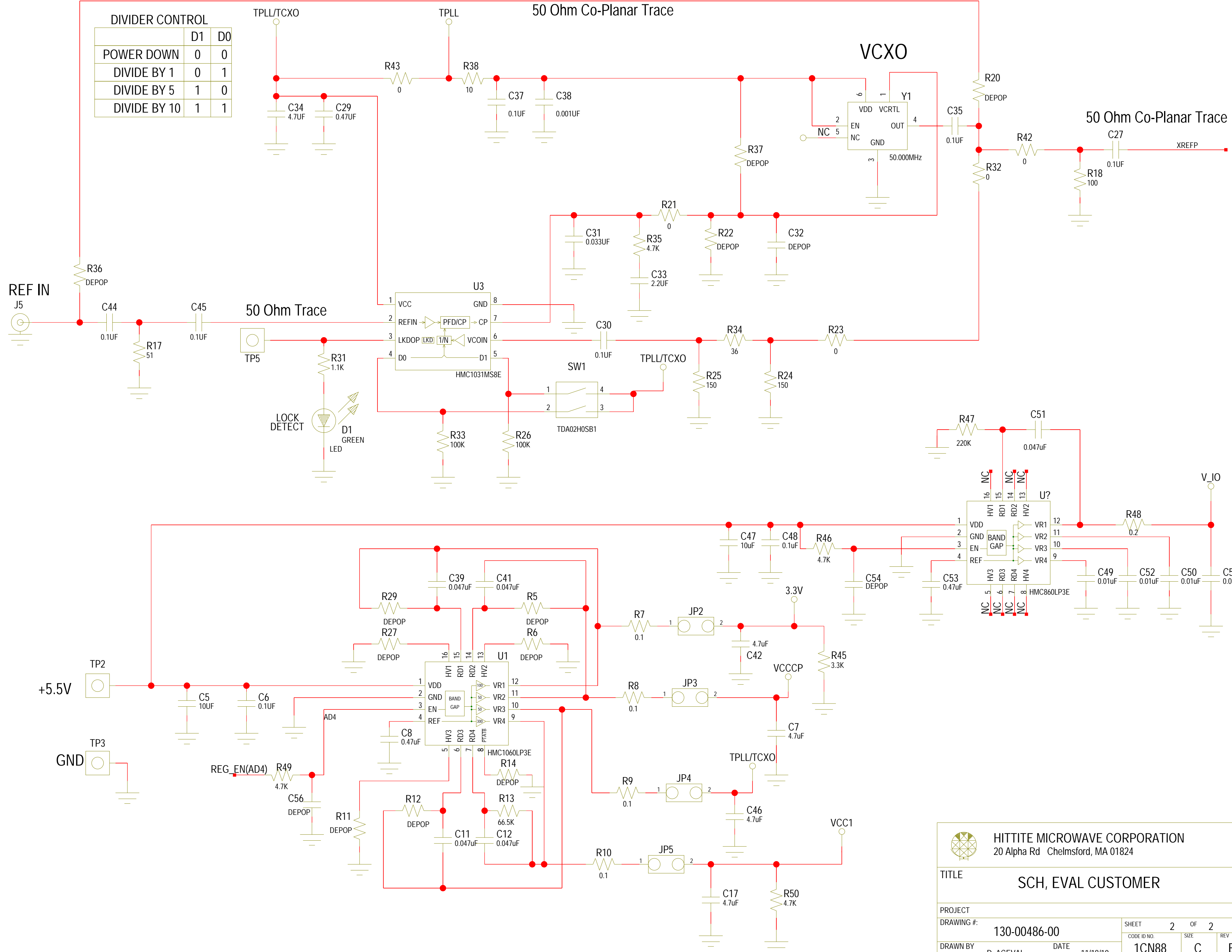
**THIS PAGE INTENTIONALLY LEFT BLANK**

| REVISIONS |          |      |                                 |           |            |
|-----------|----------|------|---------------------------------|-----------|------------|
| REV       | ECN#     | ZONE | DESCRIPTION                     | NAME      | DATE       |
| A         | CP120808 | ---- | PRODUCTION RELEASE PER CP120808 | D. ACEVAL | 04/23/2012 |
| B         | CP121326 | ---- | CHANGE AS PER CP121326          | D. ACEVAL | 10/15/2012 |

NOTICE OF PROPRIETARY PROPERTY: THIS DOCUMENT AND THE INFORMATION CONTAINED IN IT ARE THE PROPRIETARY PROPERTY OF HITTITE MICROWAVE CORPORATION. IT MAY NOT BE COPIED OR USED IN ANY MANNER NOR MAY ANY OF THE INFORMATION IN OR UPON IT BE USED FOR ANY PURPOSE WITHOUT THE EXPRESSED WRITTEN CONSENT OF AN AUTHORIZED AGENT OF HITTITE MICROWAVE CORPORATION.



|  |  |          |  |        |
|--|--|----------|--|--------|
|  <b>HITTITE MICROWAVE CORPORATION</b><br>20 Alpha Rd Chelmsford, MA 01824 |  |          |  |        |
| <b>TITLE</b><br>SCH, EVAL CUSTOMER   |  |          |  |        |
| <b>PROJECT</b><br>DRAWING #: 130-00486-00  |  |          |  |        |
| DRAWN BY   |  | DATE     |  | SHEET  |
| D.YOUNG  |  | 11/18/10 |  | 1 OF 2 |
| CODE ID NO.  |  | SIZE     |  | REV    |
| 1CN88  |  | C        |  | B      |



DIVIDER CONTROL

|              | D1 | D0 |
|--------------|----|----|
| POWER DOWN   | 0  | 0  |
| DIVIDE BY 1  | 0  | 1  |
| DIVIDE BY 5  | 1  | 0  |
| DIVIDE BY 10 | 1  | 1  |

**HITTITE MICROWAVE CORPORATION**  
 20 Alpha Rd Chelmsford, MA 01824

TITLE: SCH, EVAL CUSTOMER

PROJECT: 130-00486-00

DRAWING #: 130-00486-00

DRAWN BY: D. ACEVAL DATE: 11/18/10

SHEET 2 OF 2

CODE ID NO. 1CN88 SIZE C REV B