

REVISION			
LTR	DESCRIPTION	DATE	APPROVED
1	ENGINEERING RELEASE	10/20/11	D. ACEVAL

**NOTES:**  
UNLESS OTHERWISE SPECIFIED:

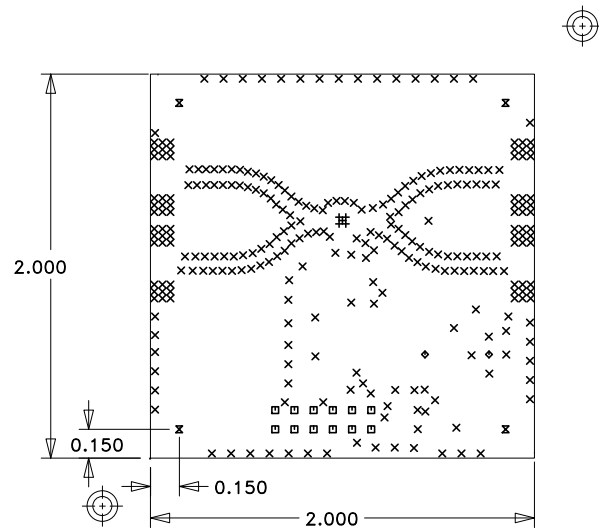
1. MATERIAL: MULTILAYER. OVERALL STACKUP AS SHOWN. TYPE ROGERS 4350 OR ARLON 25FR, HALF OUNCE COPPER BOTH SIDES. FR4 TO BE USED AS FILLER TO MEET CRITICAL OVERALL THICKNESS.
2. FINISH: GOLD PLATE PER ASTM B-488, TYPE III, CODE A, 8 TO 40 MICROINCHES, OVER NICKEL PER QQ-N-290, 100 MICROINCHES MINIMUM.
3. PLATED THRU HOLES: .001 MINIMUM WALL THICKNESS.
4. HOLE SIZES AND POSITIONS PER ARTWORK AND/OR DRILL FILE.
5. ALL HOLES TO BE LOCATED WITHIN  $\pm .003$  OF THE CENTER OF THE PAD OR OTHER TRUE POSITION.
6. FRONT TO BACK REGISTRATION  $\pm .003$  MAX.
7. BOARD WARPAGE:  $< .010$  PER LINEAR INCH.
8. SILKSCREEN TOP AND BOTTOM SIDE WITH WHITE EPOXY INK.
9. SOLDERMASK: LPI SOLDERMASK TOP AND BOTTOM SIDE. COLOR: GREEN REGISTRATION:  $\pm .004$  MAX.
10. "SIZE" IN DRILL LEGEND IS IN MILS AND REFERS TO FINISHED HOLE SIZE.
11. MANUFACTURE PER IPC-6012 CLASS 2.
12. PLATING THICKNESS .002  $\pm .0005$  FOR METAL-01 AND METAL-04.
13. ARTWORK IS 1:1. VENDOR TO ADJUST FOR ETCH FACTOR.

**SPECIAL REQUIREMENTS:**

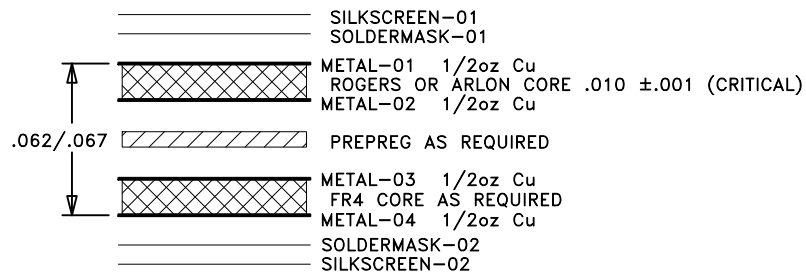
14. CRITICAL LINE WIDTH =  $.016 \pm .001$  ON METAL-01. ADJUST PROCESS TO ACHIEVE WIDTH.

**VENDOR NOTES:**

15. VENDOR MAY ADD E-TEST STAMP TO PCB. VENDOR SHALL NOT ADD NAME, LOGO, DATE CODE, UL LISTING OR ANY OTHER MARKING TO ANY VISIBLE LAYER.
19. BOARDS MUST PASS VISUAL INSPECTION PER IPC-A-600 CLASS 2.



HITTITE MICROWAVE  
PCB # 600-00314-00-1  
DRILL DRAWING



**LAYER STACKUP**

SIZE	QTY	SYM	PLATED	TOL
10	5	+	YES	+/-3
14	284	×	YES	+/-3
40	12	□	YES	+/-3
63	2	◇	YES	+/-3
125	4	⊗	YES	+/-3

UNLESS OTHERWISE SPECIFIED: DIMENSIONS ARE IN INCHES [mm]  DRAWING PRACTICES PER ASME Y14.100  INTERPRET DIMENSIONS & TOLERANCES PER ASME Y14.5-2009  TOLERANCES: .XX ± .01 .XXX ± .005 .XXXX ± .0020 ANGLES ± .5 DEG.	DRAWN BY D. ACEVAL	DATE DRN 10/20/11
	CHECKED BY	
	ENGINEER T. PAMIR	10/20/11
	THIRD ANGLE PROJECTION	
DO NOT SCALE DRAWING		

PROPRIETARY TO HITTITE MICROWAVE CORPORATION



HITTITE MICROWAVE CORPORATION  
20 Alpha Road  
Chelmsford, MA 01824

TITLE PCB CUSTOMER EVALUATION			
SIZE A	CODE ID NO. 1CN88	DWG NO. 600-00314-00	REV 1
SCALE: 1:1		WT:	SHEET: 1 OF 1

NEXT ASSY	USED ON
-----------	---------