

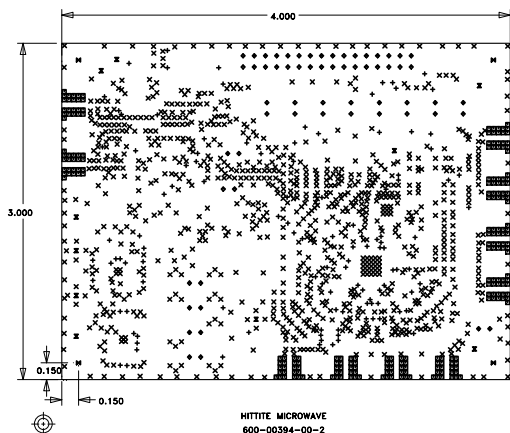
4

3

2

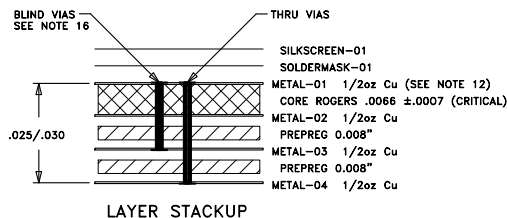
1

REVISION				
ZONE	LTR	DESCRIPTION	DATE	APPROVED
	1	ENGINEERING RELEASE	02/15/12	V.VADUVA
	2	ENGINEERING CHANGE	09/17/12	D. ACEVAL



HITTITE MICROWAVE
600-00394-00-2
DRILL DRAWING

SIZE	QTY	SYM	PLATED	THR/PRTL	TOL
10	1051	X	YES	THR	+/-3
10	114	+	YES	P1-3	+/-3
14	220	□	YES	THR	+/-3
40	62	◇	YES	THR	+/-3
63	10	⊗	YES	THR	+/-3
125	4	⊗	YES	THR	+/-3



LAYER STACKUP

NOTES:

UNLESS OTHERWISE SPECIFIED:


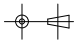
- MATERIAL: MULTILAYER, OVERALL STACKUP AS SHOWN. TYPE ROGERS 4350B, HALF OUNCE COPPER BOTH SIDES.
FR4 TO BE USED AS FILLER TO MEET CRITICAL OVERALL THICKNESS.
- FINISH: GOLD PLATE PER ASTM B-488, TYPE III, CODE A, 8 TO 40 MICRONS, OVER NICKEL PER QQ-N-290, 100 MICRONS MINIMUM.
- PLATED THRU HOLES: .001 MINIMUM WALL THICKNESS.
- HOLE SIZES AND POSITIONS PER ARTWORK AND/OR DRILL FILE.
- ALL HOLES TO BE LOCATED WITHIN ±.003 OF THE CENTER OF THE PAD OR OTHER TRUE POSITION.
- FRONT TO BACK REGISTRATION ±.003 MAX.
- BOARD WARPAGE: <.010 PER LINEAR INCH.
- SILKSCREEN TOP SIDE AND BOTTOM SIDE WITH WHITE EPOXY INK.
- SOLDERMASK: LPI SOLDERMASK TOP SIDE AND BOTTOM SIDE. COLOR: GREEN REGISTRATION: ±.004 MAX.
- "SIZE" IN DRILL LEGEND IS IN MILS AND REFERS TO FINISHED HOLE SIZE.
- MANUFACTURE PER IPC-6012 CLASS 2.
- PLATING THICKNESS .002 ±.0005 FOR METAL-01 AND METAL-04.
- ARTWORK IS 1:1. VENDOR TO ADJUST FOR ETCH FACTOR.

SPECIAL REQUIREMENTS:

- CRITICAL LINE WIDTH = .0115 ±.001 ON METAL-01. ADJUST PROCESS TO ACHIEVE WIDTH.
- ALL .010 VIAS TO BE FILLED WITH NON-CONDUCTIVE VIA FILL AND OVERPLATED WITH Cu BOTH SIDES.
- BLIND VIAS: METAL LAYERS 1 - 3 PER DRILL FILE.

VENDOR NOTES:

- VENDOR MAY ADD E-TEST STAMP TO PCB. VENDOR SHALL NOT ADD NAME, LOGO, DATE CODE, UL LISTING OR ANY OTHER MARKING TO ANY VISIBLE LAYER.
- BOARDS MUST PASS VISUAL INSPECTION PER IPC-A-600 CLASS 2.

UNLESS OTHERWISE SPECIFIED:		DRAWN BY		DATE DRN		 <div>HITTITE MICROWAVE CORPORATION 20 Alpha Road Chelmsford, MA 01824</div>							
DIMENSIONS ARE IN INCHES [mm]		V.VADUVA		02/13/12									
CHECKED BY		G.HARRINGTON		02/13/12		TITLE PCB, CUSTOMER EVAL							
DRAWING PRACTICES PER ASME Y14.100		ENGINEER											
INTERPRET DIMENSIONS & TOLERANCES PER ASME Y14.5-2009		B.TOOLE		02/13/12		SIZE B		CODE ID NO. 1CN88		DWG NO. 600-00394-00		REV 2	
TOLERANCES:		THIRD ANGLE PROJECTION											
.XX ± .01		<div>DO NOT SCALE DRAWING</div>											
.XXX ± .005													
.XXXX ± .0020													
ANGLES ± .5 DEG.						SCALE: 1:1		WT:		SHEET: 1 OF 1			

NEXT ASSY

USED ON

4

3

2

1