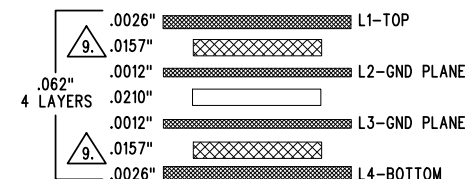
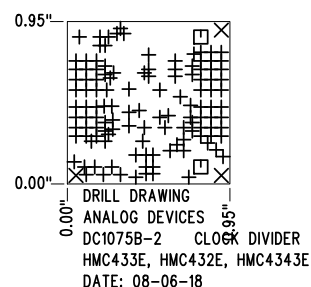


REVISION HISTORY				
ECO	REV	DESCRIPTION	APP. ENG.	DATE
-	2	2ND PROTOTYPE	GUY H.	08-06-18

LAYER STRUCTURE



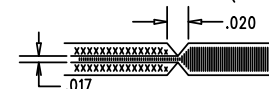
SHOWN FROM TOP SIDE



SIZE	QTY	SYM	PLATED	TOL
0.012	122	+	YES	+/-0.003"
0.07	3	X	NO	+/-0.003"
0.064	2	□	YES	+/-0.003"

NOTES: UNLESS OTHERWISE SPECIFIED

- FAB PER IPC-A-600.
- MATERIAL: -LEAD FREE ASSEMBLY COMPLIANT, ISOLA FR-370HR OR EQUIVALENT.
-FINISHED THICKNESS TO BE 0.062" +/- .005"
-TOTAL OF 4 LAYERS WITH 2 OZ. CU ON THE OUTER LAYERS AND 1 OZ. CU ON THE INNER LAYERS.
-FLAMMABILITY RATING: 94 V-0 MINIMUM.
- SIZE: CUT TO DIMENSIONS AND TOLERANCES SHOWN.
0.00" ARE PRIMARY DATUMS.
- DRILLING: -DRILL HOLES PER SCHEDULE. PLATE THROUGH HOLES WITH COPPER, 0.001" THICK MIN.
-ALL HOLE SIZES ARE SPECIFIED AFTER PLATING.
-HOLE LOCATION TOLERANCES ARE +/-0.003" IN RELATION TO CENTER
- FINISH: -SMOBC USING LPI BOTH SIDES, COLOR GREEN.
-GOLD IMMERSION BOTH SIDES.
-FOR SILKSCREENS: USE WHITE NON-CONDUCTIVE INK.
- DO NOT ALTER ARTWORK e.g. TO ADD LOGO OR DATE CODE.
PAD SIZE CAN BE MODIFIED TO MEET END FINISH.
- PCBS ARE TO BE RoHS COMPLIANT.
- SCORING FOR PANELIZED PCB (PRODUCTION FAB ONLY):



9. SUBJECT TO CHANGE BY MANUFACTURER, DEPENDING ON DIELECTRIC CONSTANT DEVIATIONS. PLEASE CONSULT ADI.

UNLESS OTHERWISE SPECIFIED		APPROVALS		 AHEAD OF WHAT'S POSSIBLE™	
DIMENSIONS ARE IN INCHES TOLERANCES: 0.XX" = ±0.01" 0.XXX" = ±0.005" INTERPRET DIM AND TOL PER ASME Y14.5M-1994 THIRD ANGLE PROJECTION		PCB DES.	KIM T.		
		APP ENG.	GUY H.	TITLE: FABRICATION DRAWING	
				CLOCK DIVIDER	
				SIZE	IC NO. HMC433E, HMC432E, HMC4343E
				N/A	DEM0 CIRCUIT 1075B
		SCALE = NONE		REV	2
				FILENAME:	DC1075B-2.PCB
				SHT	1 OF 1

1630 MCCARTHY BLVD
MILPITAS, CA 95035
PH: (408)432-1900
www.analog.com
ADI CONFIDENTIAL -
FOR CUSTOMER USE ONLY