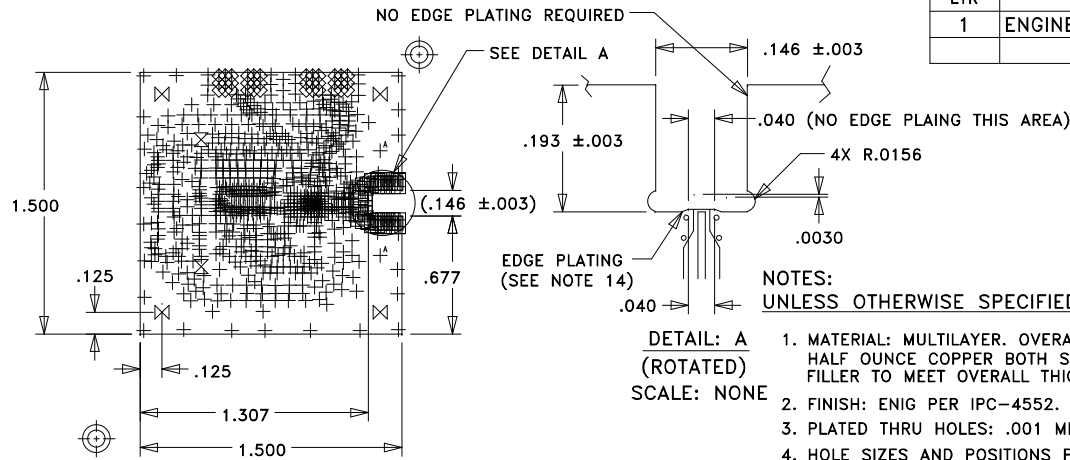


REVISION			
LTR	DESCRIPTION	DATE	APPROVED
1	ENGINEERING RELEASE	12/11/14	V. LY



NOTES:
UNLESS OTHERWISE SPECIFIED:

1. MATERIAL: MULTILAYER. OVERALL STACKUP AS SHOWN. TYPE ROGERS 4350B HALF OUNCE COPPER BOTH SIDES, 370HR OR EQUIVALENT TO BE USED AS FILLER TO MEET OVERALL THICKNESS.
2. FINISH: ENIG PER IPC-4552.
3. PLATED THRU HOLES: .001 MINIMUM WALL THICKNESS.
4. HOLE SIZES AND POSITIONS PER ARTWORK AND/OR DRILL FILE.
5. ALL HOLES TO BE LOCATED WITHIN ±.003 OF THE CENTER OF THE PAD OR OTHER TRUE POSITION.
6. FRONT TO BACK REGISTRATION ±.003 MAX.
7. BOARD WARPAGE: <.010 PER LINEAR INCH.
8. SILKSCREEN BOTH SIDES WITH WHITE EPOXY INK.
9. SOLDERMASK OVER BARE COPPER BOTH SIDES. COLOR: GREEN REGISTRATION: ±.004 MAX.
10. "SIZE" IN DRILL LEGEND IS IN MILS AND REFERS TO FINISHED HOLE SIZE.
11. MANUFACTURE PER IPC-6012 CLASS 2.
12. ARTWORK IS 1:1 VENDOR TO ADJUST FOR ETCH FACTOR.

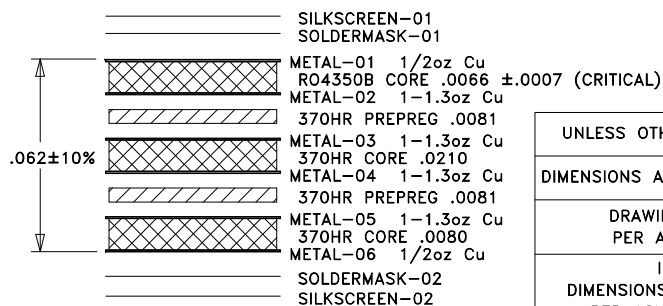
SPECIAL REQUIREMENTS:

13. CRITICAL LINE WIDTH = .012 ±.001 ON METAL-01. ADJUST PROCESS TO ACHIEVE WIDTH.
14. METAL-03: DIFFERENTIAL IMPEDANCE OF 100 OHMS ±10% ON DUAL 7 MIL TRACES WITH 10 MIL SPACING.
15. EDGE PLATING MUST CONNECT METAL-01, METAL-02, METAL-05 AND METAL-06.
16. ALL VIAS TO BE FILLED WITH NON-CONDUCTIVE VIA FILL AND OVERPLATED WITH Cu BOTH SIDES.

VENDOR NOTES:

16. VENDOR MAY ADD E-TEST STAMP TO PCB. VENDOR SHALL NOT ADD NAME, LOGO, DATE CODE, UL LISTING OR ANY OTHER MARKING TO ANY VISIBLE LAYER.
17. BOARDS MUST PASS VISUAL INSPECTION PER IPC-A-600 CLASS 2.

SIZE	QTY	SYM	PLATED	TOL
6	724	+	YES	+/-3 FILLED
8	52	□	YES	+/-3 FILLED
14	36	◇	YES	+/-3
40	2	⊗	NO	+/-3
102	4	⊗	YES	+/-3
127	2	⊕	YES	+/-3




LAYER STACKUP

NEXT ASSY	USED ON

UNLESS OTHERWISE SPECIFIED:	
DIMENSIONS ARE IN INCHES [mm]	
DRAWING PRACTICES PER ASME Y14.100	
INTERPRET DIMENSIONS & TOLERANCES PER ASME Y14.5-2009	
TOLERANCES:	
.XX	± .01
.XXX	± .005
.XXXX	± .0020
ANGLES	± .5 DEG.

DRAWN BY	V. LY	DATE DRN	11/26/14
CHECKED BY			
ENGINEER	M. DAMATO	11/26/14	
THIRD ANGLE PROJECTION			
DO NOT SCALE DRAWING			

PROPRIETARY TO ANALOG DEVICES			
 ANALOG DEVICES		2 Elizabeth Drive Chelmsford, MA 01824 978-250-3343 Fax: 978-250-3373	
TITLE			
PCB, RX MODULE			
SIZE	CODE ID NO.	DWG NO.	REV
A	1CN88	600-01362-00	1
SCALE: 1:1		WT:	SHEET: 1 OF 1