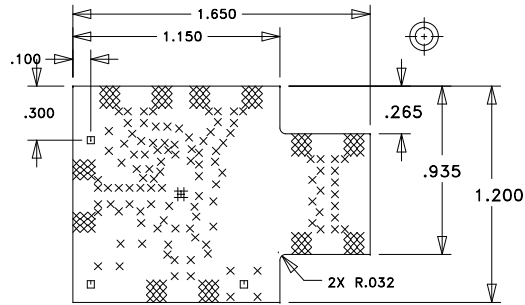
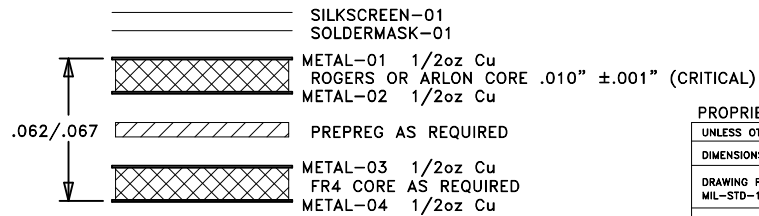


DO NOT SCALE PRINT



HITTITE MICROWAVE
PCB #125823-1
DRILL DRAWING

SIZE	QTY	SYM	PLATED	TOL
10	5	+	YES	+/-3
14	218	X	YES	+/-3
43	3	□	YES	+/-3



LAYER STACKUP

PROPRIETARY TO HITTITE MICROWAVE CORPORATION

UNLESS OTHERWISE SPECIFIED:	
DIMENSIONS ARE IN INCHES (MM)	
DRAWING PRACTICES PER MIL-STD-100	
TOLERANCES:	
.XX	+/- 0.010
.XXX	+/- 0.005
.XXXX	+/- 0.002
ANGLES	+/- .5 DEG

DWN BY:	M. GIRDVAINIS 4/27/09
ENGINEER:	SELEN KILINC



HITTITE MICROWAVE CORPORATION
20 Alpha Road Chelmsford, MA 01824

TITLE
PCB, EVAL
HMC4729LP3E

SIZE	CODE ID NO.	DRAWING NO.	REV
A	1CN88	125823	1
SCALE:		WT	SHEET 1 of 1

NOTES:

MATERIALS AND TOLERANCES:

1. MATERIAL: MULTILAYER. OVERALL STACKUP AS SHOWN. TYPE ROGER 4350 OR ARLON 25FR, HALF OUNCE COPPER BOTH SIDES, TOPSIDE ONLY. FR4 TO BE USED AS FILLER TO MEET CRITICAL OVERALL THICKNESS.
2. FINISH: GOLD PER ASTM B-488 TYPE III CODE A 8-40 MICROINCHES OVER NICKEL PER QQ-N-290, 100 MICROINCHES MINIMUM.
3. APPLY LPI SOLDERMASK TOP SIDE. COLOR: GREEN.
4. SILKSCREEN TOP SIDE WITH WHITE NON-CONDUCTIVE INK. ENSURE SILKSCREEN DOES NOT COVER COMPONENT PADS - CLIP SILKSCREEN IF NECESSARY.
5. MANUFACTURE PER IPC-600 CLASS 2.
6. ALL HOLES TO BE LOCATED WITHIN $\pm .003$ " OF CENTER OF PAD OR OTHER TRUE POSITION.
7. COPPER PLATE ALL HOLES MINIMUM .001" COPPER WALL THICKNESS.
8. "SIZE" IN DRILL LEGEND IS IN MILS AND REFERS TO FINISHED HOLE SIZE.
9. WARPAGE: $< .010$ " PER LINEAR INCH.
10. FRONT TO BACK REGISTRATION: $\pm .003$ " MAX.

SPECIAL REQUIREMENTS:

11. CRITICAL LINE WIDTH OF .016" $\pm .001$ " ON METAL-01.

VENDOR NOTES:

12. VENDOR MAY ADD E-TEST STAMP TO PCB. VENDOR SHALL NOT ADD NAME, LOGO, DATE CODE, UL LISTING OR ANY OTHER MARKING TO ANY VISIBLE LAYER.
13. BOARDS MUST PASS VISUAL INSPECTION PER IPC-600 CLASS 2.