


REVISIONS					
REV	ECN#	ZONE	DESCRIPTION	NAME	DATE
C	CP120602	-----	CHANGED VALUE OF R135	D. ACEVAL	04/25/2012
D	CP120872	-----	CHANGED ELECRITICAL DESIGN	V. VADUVA	06/12/2012

NOTICE OF PROPRIETARY PROPERTY: THIS DOCUMENT AND THE INFORMATION CONTAINED IN IT ARE THE PROPRIETARY PROPERTY OF HITTITE MICROWAVE CORPORATION. IT MAY NOT BE COPIED OR USED IN ANY MANNER NOR MAY ANY OF THE INFORMATION IN OR UPON IT BE USED FOR ANY PURPOSE WITHOUT THE EXPRESSED WRITTEN CONSENT OF AN AUTHORIZED AGENT OF HITTITE MICROWAVE CORPORATION.

 HITTITE MICROWAVE CORPORATION 20 Alpha Rd Chelmsford, MA 01824					
TITLE SCH, CUSTOMER EVALUATION					
PROJECT HMC983LP5E, HMC984LP4E					
DRAWING #: 130-00267-00			SHEET 1	OF 4	REV 4
DRAWN BY K. SHEIKH			DATE 07/27/2011	SIZE 1CN88	REV D

EXT_REF

TCXO_POWER

TCXO_POWER

Re-worked connections around LPF op-amps

VCO

OP_AMP_SUPPLY

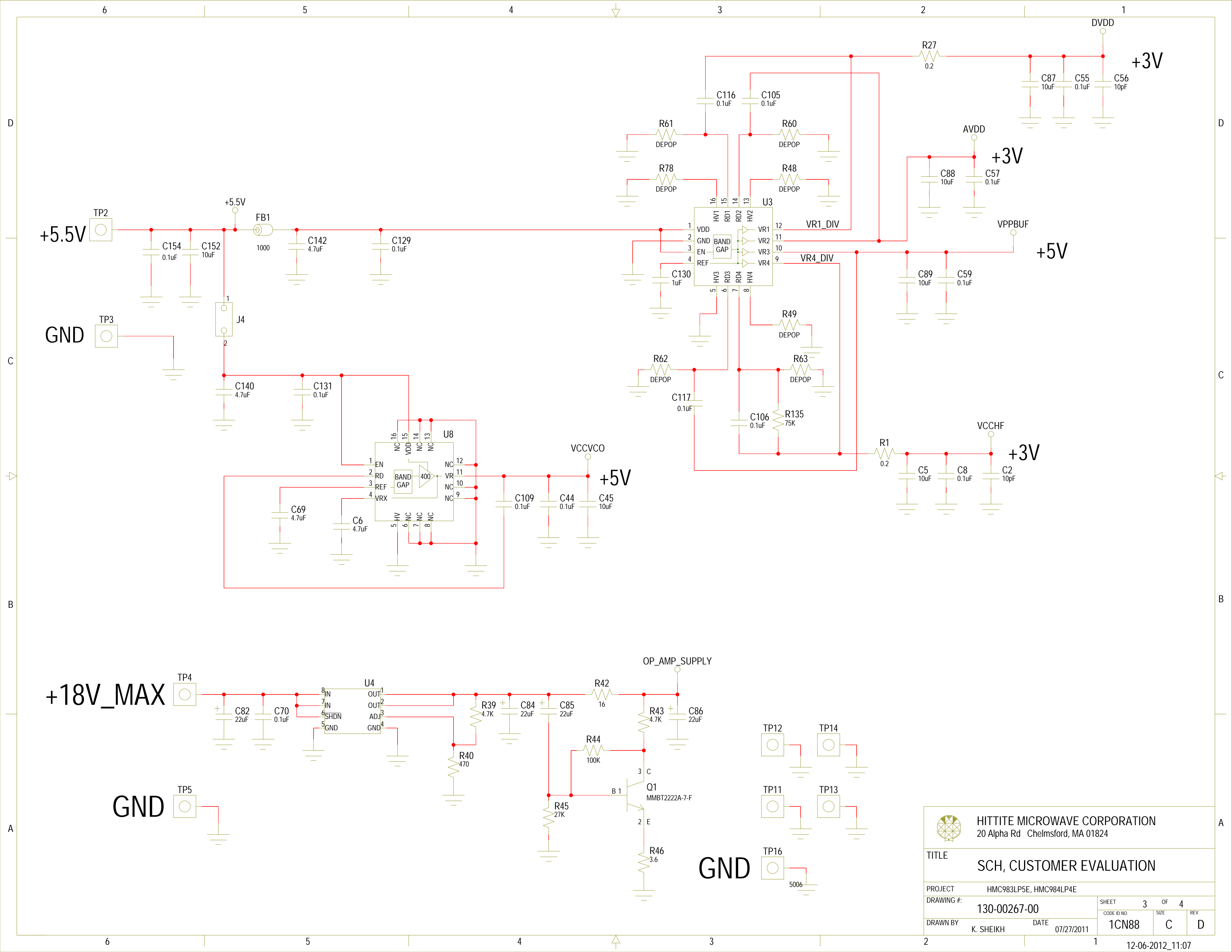
-2V




HITTITE MICROWAVE CORPORATION
20 Alpha Rd Chelmsford, MA 01824

TITLE
SCH, CUSTOMER EVALUATION

PROJECT	HMC983LP5E, HMC984LP4E			SHEET	2	OF	4
DRAWING #:	130-00267-00			CODE ID NO.	1CN88	SIZE	C
DRAWN BY	K. SHEIKH	DATE	07/27/2011			REV	D





HITTITE MICROWAVE CORPORATION

20 Alpha Rd Chelmsford, MA 01824

TITLE

SCH, CUSTOMER EVALUATION

PROJECT

HMC983LP5E, HMC984LP4E

DRAWING #:

130-00267-00

DRAWN BY

K. SHEIKH

DATE

07/27/2011

SHEET

3

OF

4

CODE ID NO.

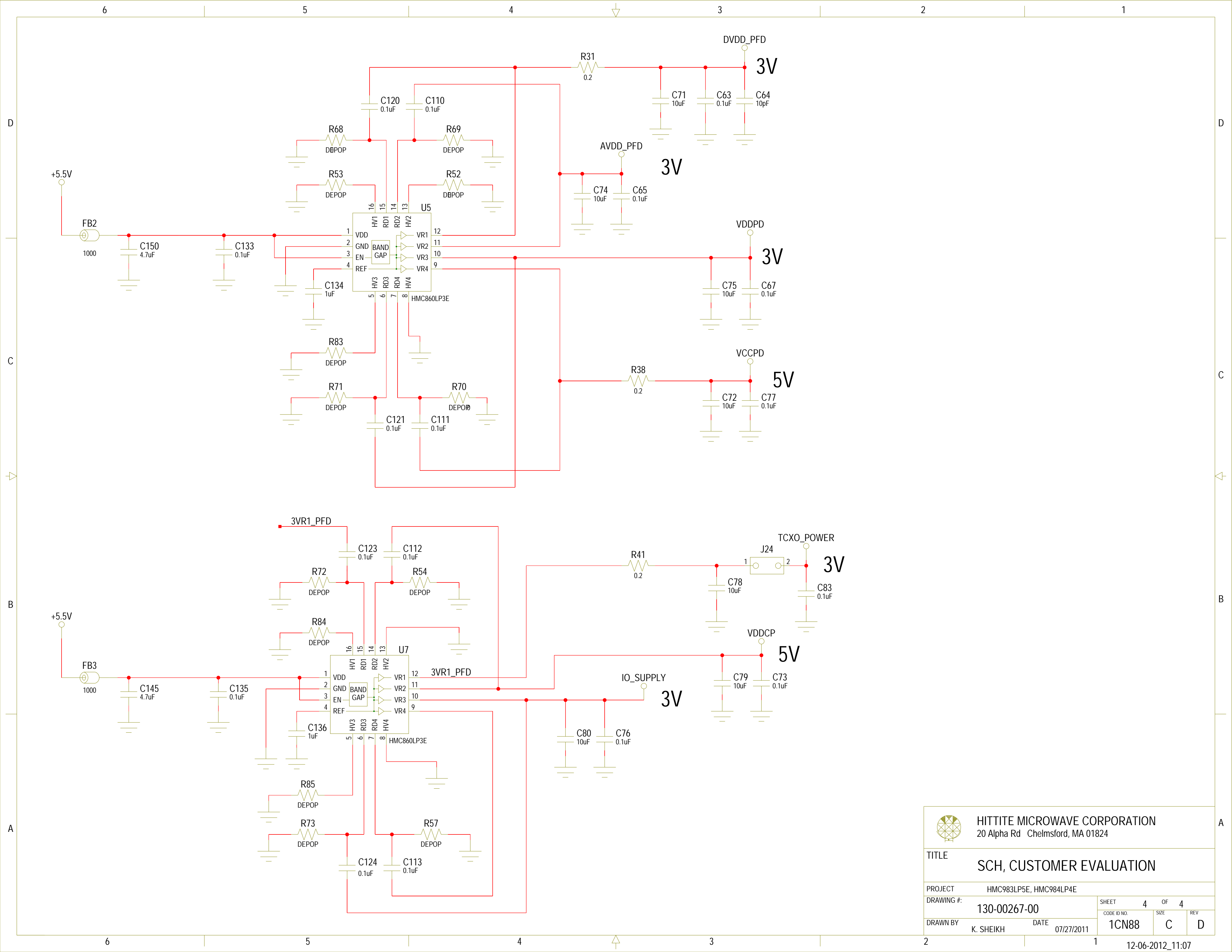
1CN88

SIZE

C

REV

D



HITTITE MICROWAVE CORPORATION
20 Alpha Rd Chelmsford, MA 01824

TITLE
SCH, CUSTOMER EVALUATION

PROJECT	HMC983LP5E, HMC984LP4E		
DRAWING #:	130-00267-00		
DRAWN BY	K. SHEIKH	DATE	07/27/2011
SHEET 4 OF 4		CODE ID NO.	1CN88
		SIZE	C
		REV	D