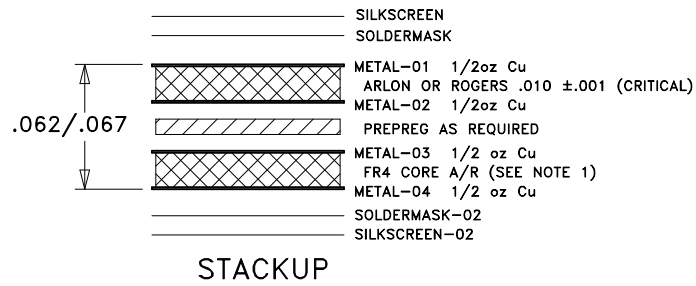
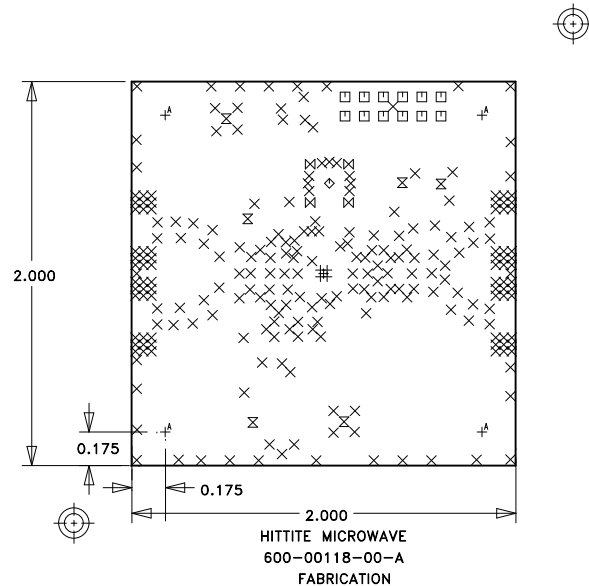


REVISION			
LTR	DESCRIPTION	DATE	APPROVED
A	PRODUCTION RELEASE CP110717	05/25/11	V.VADUVA



NOTES:

UNLESS OTHERWISE SPECIFIED:

1. MATERIAL: MULTILAYER. OVERALL STACKUP AS SHOWN. TYPE RO4350 OR ARLON 25FR, HALF OUNCE COPPER BOTH SIDES. FR4 TO BE USED AS FILLER TO MEET CRITICAL OVERALL THICKNESS.
2. FINISH: GOLD PLATE PER ASTM B-488, TYPE III, CODE A, 8 TO 40 MICROINCHES, OVER NICKEL PER QQ-N-290, 100 MICROINCHES MINIMUM.
3. PLATED THRU HOLES: .001 MINIMUM WALL THICKNESS.
4. HOLE SIZES AND POSITIONS PER ARTWORK AND/OR DRILL FILE.
5. ALL HOLES TO BE LOCATED WITHIN ± 0.003 OF THE CENTER OF THE PAD OR OTHER TRUE POSITION.
6. FRONT TO BACK REGISTRATION ± 0.003 MAX.
7. BOARD WARPAGE: < 0.010 PER LINEAR INCH.
8. SILKSCREEN BOTH SIDES WITH WHITE EPOXY INK.
9. SOLDERMASK: LPI SOLDERMASK BOTH SIDES. COLOR: GREEN REGISTRATION: ± 0.004 MAX.
10. "SIZE" IN DRILL LEGEND IS IN MILS AND REFERS TO FINISHED HOLE SIZE.
11. MANUFACTURE PER IPC-6012 CLASS 2.

SPECIAL REQUIREMENTS:

12. CRITICAL LINE WIDTH = 0.016 ± 0.001 ON METAL-01. ADJUST PROCESS TO ACHIEVE WIDTH.

VENDOR NOTES:

13. VENDOR MAY ADD E-TEST STAMP TO PCB. VENDOR SHALL NOT ADD NAME, LOGO, DATE CODE, UL LISTING OR ANY OTHER MARKING TO ANY VISIBLE LAYER.
14. BOARDS MUST PASS VISUAL INSPECTION PER IPC-A-600 CLASS 2.

SIZE	QTY	SYM	PLATED	TOL
10	5	+	YES	+/-3
14	245	X	YES	+/-3
40	12	□	YES	+/-3
59	1	◇	YES	+/-3
63	6	⊗	YES	+/-3
67	4	⊗	YES	+/-3
125	4	+ ^A	YES	+/-3

PROPRIETARY TO HITTITE MICROWAVE CORPORATION



HITTITE MICROWAVE CORPORATION
20 Alpha Road
Chelmsford, MA 01824

TITLE			
PCB, CUSTOMER EVALUATION			
SIZE	CODE ID NO.	DWG NO.	REV
A	1CN88	600-00118-00	A
SCALE: 1:1		WT:	SHEET: 1 OF 1

UNLESS OTHERWISE SPECIFIED:		DRAWN BY	DATE DRN
DIMENSIONS ARE IN INCHES [mm]		V.VADUVA	02/14/11
DRAWING PRACTICES PER ASME Y14.100		CHECKED BY	02/14/11
INTERPRET DIMENSIONS & TOLERANCES PER ASME Y14.5-2009		D.YOUNG	ENGINEER
TOLERANCES:		THIRD ANGLE PROJECTION	
.XX	± .01	DO NOT SCALE DRAWING	
.XXX	± .005		
.XXX	± .0020		
ANGLES	± .5 DEG.		
NEXT ASSY	USED ON		