



DESIGN NOTES

Selecting Op Amps for Precision 16-Bit DACs – Design Note 214

Kevin R. Hoskins, Jim Brubaker and Patrick Copely

The LTC[®]1597 16-bit current output DAC offers a new level of accuracy and cost efficiency. It has exceptionally high accuracy and low drift: ± 1 LSB (max) INL and DNL over temperature. It eliminates costly external resistors in bipolar applications because it includes tightly trimmed, on-chip 4-quadrant resistors. To help achieve the best circuit DC performance, this design note offers two sets of easy-to-use design equations for evaluating an op amp's effects on the DAC's accuracy in terms of INL, DNL, offset (unipolar), zero (bipolar), unipolar and bipolar gain errors. With this information, selecting an op amp that gives the accuracy you need in a unipolar or bipolar application is easy.

Figure 1 shows a unipolar application that combines the LTC1597 DAC and LT[®]1468 fast settling op amp. The equations for evaluating the effects of the op amp on the DAC's accuracy are shown in Table 1. Quick work on Table 1's equations with a calculator gives the results shown in Table 2. These are the changes the op amp

can cause to the INL, DNL, unipolar offset and gain error of the DAC. Note, all are substantially less than 1LSB. Thus, the LT1468 is an excellent choice.

The LTC1597's internal design is very insensitive to offset-induced INL and DNL changes. An op amp V_{OS} as large as 0.5mV causes just 0.55LSB INL and 0.15LSB DNL in the output voltage for $10V_{FS}$. So, how

LT, LT, LTC, LTM, Linear Technology and the Linear logo are registered trademarks of Linear Technology Corporation. All other trademarks are the property of their respective owners.

Table 2. Changes to Figure 1's Accuracy in Terms of INL, DNL, Offset and Gain Error When Using the Fast Settling LT1468. $V_{REF} = 10V$

LT1468	TYPICAL	INL (LSB)	DNL (LSB)	OFFSET	GAIN ERROR (LSB)
V_{OS} (mV)	0.03	0.036	0.009	0.2	0.21
I_B (nA)	3	0.0017	0.0005	0.2	0
A_{VOL} (V/V)	9000k	0.0011	0.0003	0	0.015
TOTALS		0.039	0.01	0.4	0.23

Table 1. Easy-to-Use Equations Determine Op Amp Effects on DAC Accuracy in Unipolar Applications

OP AMP	INL (LSB)	DNL (LSB)	UNIPOLAR OFFSET (LSB)	UNIPOLAR GAIN ERROR (LSB)
V_{OS} (mV)	$V_{OS} \cdot 1.2 \cdot (10V/V_{REF})$	$V_{OS} \cdot 0.3 \cdot (10V/V_{REF})$	$V_{OS} \cdot 6.6 \cdot (10V/V_{REF})$	$V_{OS} \cdot 6.9 \cdot (10V/V_{REF})$
I_B (nA)	$I_B \cdot 0.00055 \cdot (10V/V_{REF})$	$I_B \cdot 0.00015 \cdot (10V/V_{REF})$	$I_B \cdot 0.065 \cdot (10V/V_{REF})$	0
A_{VOL} (V/V)	$10k/A_{VOL}$	$3k/A_{VOL}$	0	$131k/A_{VOL}$

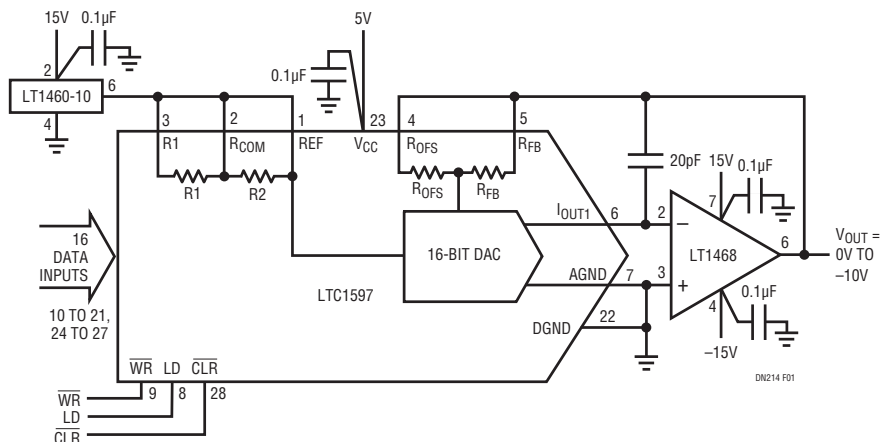


Figure 1. Unipolar V_{OUT} DAC/Op Amp Circuit Swings $10V_{FS}$ (0V to $-10V$) and Settles to 16 Bits in $< 2\mu s$. For 0V to 10V Swings, the Reference Can Be Inverted with R1, R2 and Another Op Amp

does the LT1468 effect, for example, the DAC's DNL? From Table 2, the LT1468 adds approximately 0.01LSB of additional DNL to the output. This, along with the LTC1597's typical 0.2LSB DNL, give a total DAC/op amp DNL of just 0.21LSB (typ). This is well under the -1LSB needed to ensure monotonic operation.

Figure 2 shows a bipolar application that combines the LTC1597 and a dual LT1112 op amp. The equations for evaluating the effects of two amplifiers in bipolar operation are just as easy to use and are shown in Table 3. A quick application of Table 3's equations gives the accuracy changes shown in Table 4. Again, each effect is substantially less than 1LSB. This shows that with proper op amp selection, the LTC1597's excellent linearity and precision are not degraded even in bipolar applications.

The totals in Tables 2 and 4 are algebraic sums of the absolute values, producing a worst-case error.

While not directly addressed by the simple equations in Tables 1 and 3, temperature effects can be handled

just as easily for unipolar and bipolar applications. First, consult an op amp's data sheet to find the worst-case V_{OS} and I_B over temperature. Then, plug these numbers in the V_{OS} and I_B equations from Table 1 or Table 3 and calculate the temperature induced effects.

Table 4. Changes to Figure 2's Accuracy in Terms of INL, DNL, Bipolar Zero and Bipolar Gain Error When Using an LT1112, a Precision Dual Op Amp

LT1112	TYPICAL	INL (LSB)	DNL (LSB)	BIPOLAR ZERO ERROR (LSB)	BIPOLAR GAIN ERROR (LSB)
V_{OS1} (mV)	0.02	0.024	0.006	0.198	0.138
I_{B1} (nA)	0.07	0.00004	0.00001	0.0046	0
A_{VOL1}	5000k	0.002	0.0006	0	0.039
V_{OS2} (mV)	0.02	0	0	0.134	0.264
I_{B2} (nA)	0.07	0	0	0.0046	0.009
A_{VOL2}	5000k	0	0	0.013	0.026
TOTALS		0.026	0.007	0.354	0.476

Table 3. Easy-to-Use Equations Determine Op Amp Effects on DAC Accuracy in Bipolar Applications

OP AMP	INL (LSB)	DNL (LSB)	BIPOLAR ZERO ERROR (LSB)	BIPOLAR GAIN ERROR (LSB)
V_{OS1} (mV)	$V_{OS1} \cdot 1.2 \cdot (10V/V_{REF})$	$V_{OS1} \cdot 0.3 \cdot (10V/V_{REF})$	$V_{OS1} \cdot 9.9 \cdot (10V/V_{REF})$	$V_{OS1} \cdot 6.9 \cdot (10V/V_{REF})$
I_{B1} (nA)	$I_{B1} \cdot 0.00055 \cdot (10V/V_{REF})$	$I_{B1} \cdot 0.00015 \cdot (10V/V_{REF})$	$I_{B1} \cdot 0.065 \cdot (10V/V_{REF})$	0
A_{VOL1}	$10k/A_{VOL}$	$3k/A_{VOL1}$	0	$196k/A_{VOL1}$
V_{OS2} (mV)	0	0	$V_{OS2} \cdot 6.7 \cdot (10V/V_{REF})$	$V_{OS2} \cdot 13.2 \cdot (10V/V_{REF})$
I_{B2} (nA)	0	0	$I_{B2} \cdot 0.065 \cdot (10V/V_{REF})$	$I_{B2} \cdot 0.13 \cdot (10V/V_{REF})$
A_{VOL2}	0	0	$65k/A_{VOL2}$	$131k/A_{VOL2}$

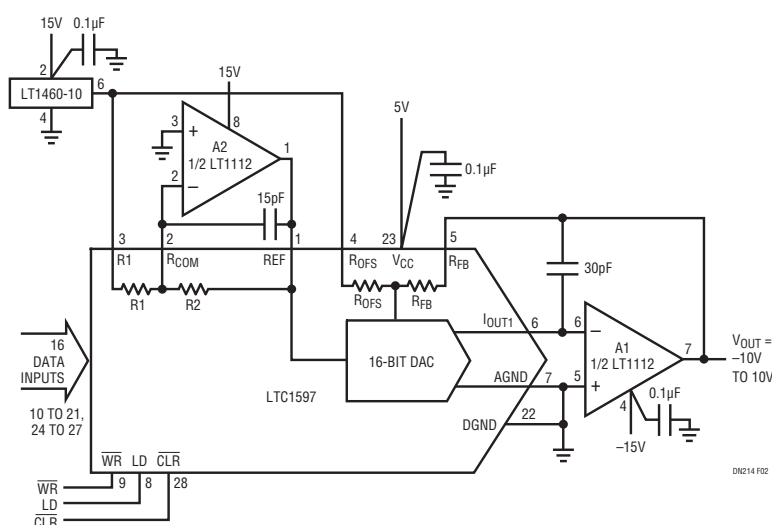


Figure 2. Bipolar Circuit Configuration for a 20V ($V_{OUT} = -10V$ to $10V$) Output Swing

Data Sheet Download

www.linear.com

For applications help,
call (408) 432-1900

Linear Technology Corporation
1630 McCarthy Blvd., Milpitas, CA 95035-7417
(408) 432-1900 • FAX: (408) 434-0507 • www.linear.com

dn214f_convLT/TP 1099 340K • PRINTED IN THE USA

LINEAR TECHNOLOGY
© LINEAR TECHNOLOGY CORPORATION 1999