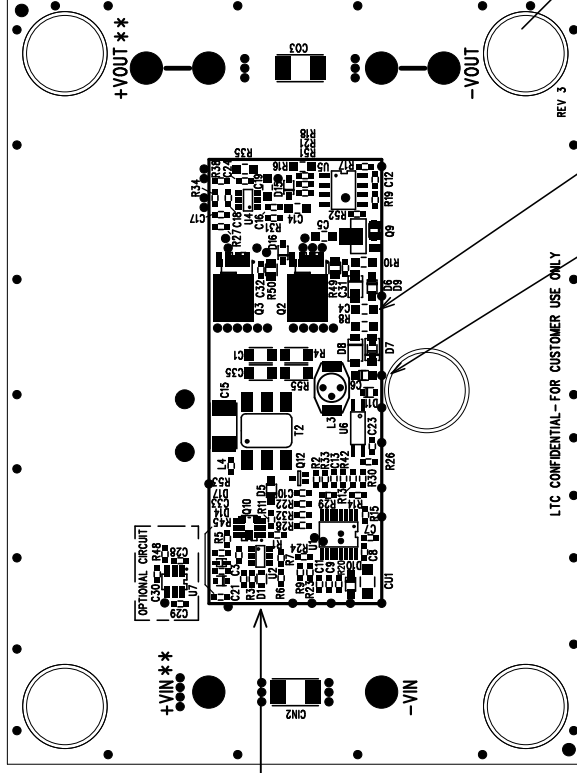
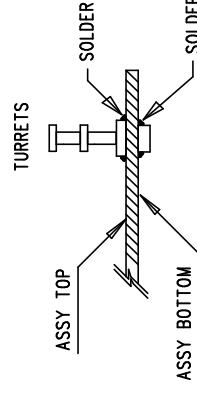


NOTES: UNLESS OTHERWISE SPECIFIED

1. WORKMANSHIP SHALL BE IN ACCORDANCE WITH IPC-A-610.
3. PARTS TO OMIT WILL BE SPECIFIED ON THE BILLS OF MATERIAL. LOCATIONS OF OMITTED PARTS SHALL BE FREE OF SOLDER. MASK THE SOLDER STENCIL WHERE SMT PARTS ARE OMITTED.
4. DEPANELIZE BOARDS AFTER ASSEMBLY AND ROUTE-OUT THE BREAKOUT TABS ON FOUR SIDES OF THE BOARD EDGE.
6. INSTALL 4 RUBBER FEET (BUMPON SJ-5303) AT 4 CORNERS AS SHOWN BELOW. INSTALL 1 RUBBER FOOT CLOSE TO L3 AREA AS SHOWN.




BOTTOM VIEW



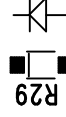
A-B ASSY DRAWING (BOTTOM VIEW)

APPROVALS		INIT		DATE	
DRAWN					
CHECK					
DESIGN		J. WU		9/20/07	
ENGR		G. PERICA		9/20/07	
SCALE = NONE					

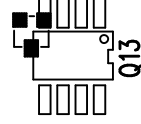
		1630 McCarthy Blvd. Milpitas, CA 95035 PH: (408)432-1900	
TITLE:		LT1952EGN-1, LT4430ES6	
		ISOLATED FORWARD DC/DC CONVERTER	
SIZE	A	DEMO CIRCUIT	REV. A
		DC1317A-B	
		SHT 1 of 1	



R29 INSTALLATION



Q13 INSTALLATION



D1 INSTALLATION:



C6 INSTALLATION



C4 INSTALLATION

