

BOTTOM VIEW

C4 INSTALLATION FOR "-B"

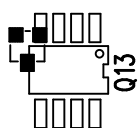
C6 INSTALLATION FOR "-B"

D1 INSTALLATION:
FOR "-C, -B",

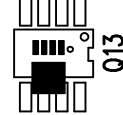


Q13 INSTALLATION

FOR -A, -B, -C, -D, -E

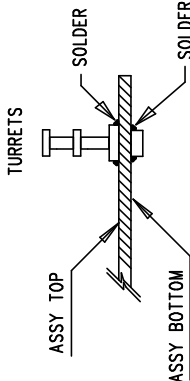
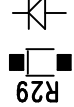


FOR -F, -G



R29 INSTALLATION

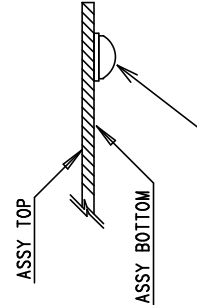
FOR -B, -C, -D, -F, -G, -H



ASSY DRAWING (BOTTOM VIEW)

NOTES: UNLESS OTHERWISE SPECIFIED

1. WORKMANSHIP SHALL BE IN ACCORDANCE WITH IPC-A-610.
3. PARTS TO OMIT WILL BE SPECIFIED ON THE BILLS OF MATERIAL. LOCATIONS OF OMITTED PARTS SHALL BE FREE OF SOLDER. MASK THE SOLDER STENCIL WHERE SMT PARTS ARE OMITTED.
4. DEPANELIZE BOARDS AFTER ASSEMBLY AND ROUTE-OUT THE BREAKOUT TABS ON FOUR SIDES OF THE BOARD EDGE.
6. INSTALL 4 RUBBER FEET (BUMPON SJ-5303) AT 4 CORNERS AS SHOWN BELOW:



APPROVALS		LINEAR TECHNOLOGY		1630 McCarthy Blvd. Milpitas, CA 95035 Tel: (408)432-1900	
		TITLE: LT1952ECN-1, LT4430ES6 ISOLATED FORWARD DC/DC CONVERTER		REV. A	
DRAWN	INT	DATE	J. WU	9/20/07	
CHECK			G. PERCA	9/20/07	
DESIGN					
ENGR					
SCALE = NONE		SIZE A		SHT 1 of 1	