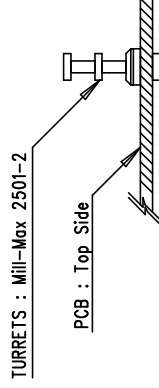
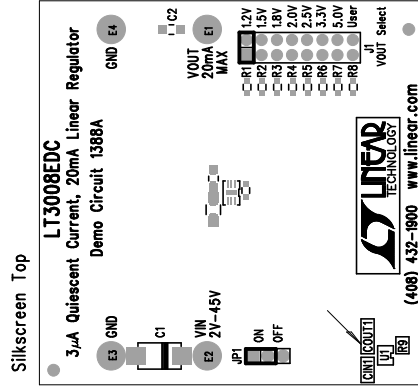


REVISIONS		
REV	DESCRIPTION	DATE

# NOTES: UNLESS OTHERWISE SPECIFIED

1. WORKMANSHIP SHALL BE IN ACCORDANCE WITH IPC-A-610.

Install Shunts on JP1 = On  
 J1 = 1.2V



## Assembly Top Drawing

APPROVALS		INIT		DATE	
DRAWN	KL				
CHECK					
DESIGN					
ENGR					
SCALE = NONE					
SHT 1 of 1					

1630 McCarthy Blvd.  
 Milpitas, CA 95035  
 PH: (408)432-1900

LT3008EDC 3µA Quiescent Current,  
 20mA Linear Regulator

SIZE A DEMO BRD Demo Circuit 1388A REV. A