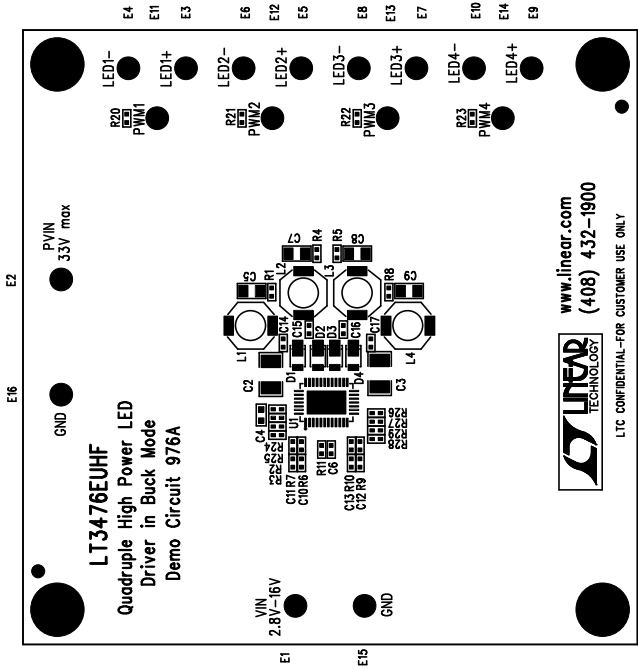


REVISIONS			
REV	DESCRIPTION	APPR	DATE




Silkscreen Top

NOTES : Unless Otherwise Specified

1. BREAK BOARDS FROM THE PANEL WHEN ASSEMBLY IS COMPLETE.
2. OPTIONAL COMPONENTS ARE UNSTUFFED AND SHOULD BE FREE OF SOLDER AFTER ASSEMBLY.

Assembly Top Drawing

APPROVALS			 LINEAR TECHNOLOGY		1630 McCarthy Blvd. Milpitas, CA 95035 PH: (408)432-1900	
	INIT	DATE	TITLE: LT3476EUHF Quadruple High Power LED Driver in Buck Mode			
DRAWN	Helen	6/22/06				
CHECK						
DESIGN						
ENGR	WALKER B.	6/22/06	SIZE A DEMO DC976A REV. A			
SCALE = NONE			DES-250		SHEET 1 of 1	