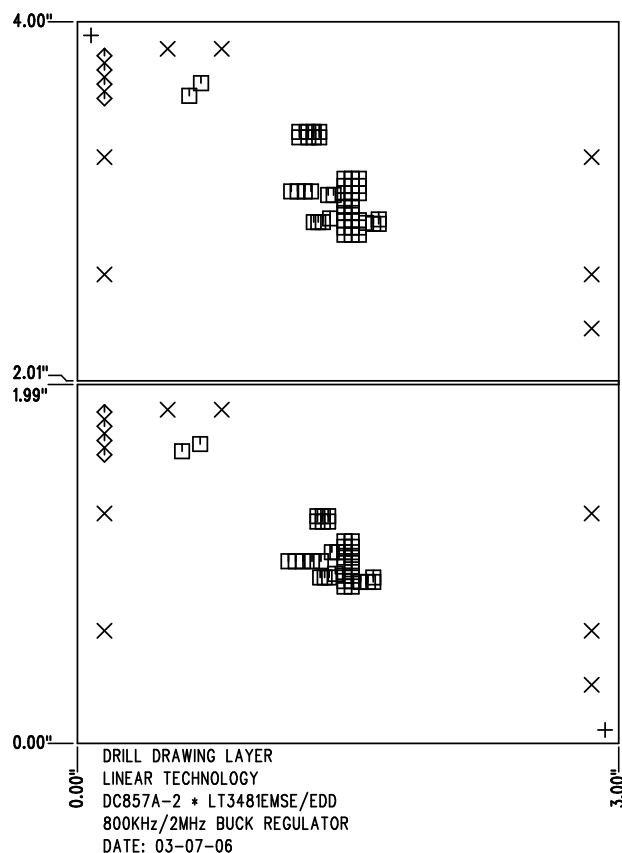


REVISIONS			
REV	DESCRIPTION	APPR	DATE
A-2	FINAL FABRICATION	KH	03-07-06

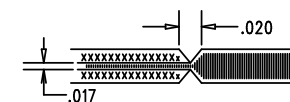



SHOWN FROM COMPONENT SIDE

SIZE	QTY	SYM	PLTD	TOL
0.07	2	+	NO	+/-0.003"
0.094	14	X	YES	+/-0.003"
0.012	88	□	YES	+/-0.003"
0.035	8	◇	YES	+/-0.003"

#### NOTES: UNLESS OTHERWISE SPECIFIED

- FAB PER IPC-A-600
- MATERIAL: EPOXY FIBERGLASS, NEMA GRADE FR-4  
FINISHED THICKNESS TO BE 0.062" +/- 0.006"  
TOTAL OF 4 LAYERS WITH 2 OZ. COPPER ON THE OUTER LAYERS AND 1 OZ. COPPER ON THE INTERNAL LAYERS.  
FLAMABILITY RATING: 94 V-0 MINIMUM .
- FINISH: SMOBC USING LPI BOTH SIDES, COLOR GREEN.  
LEAD-FREE SOLDER PLATING.  
FOR SILKSCREEN: USE WHITE NON-CONDUCTIVE INK.
- DRILLING: DRILL HOLES PER SCHEDULE. ALL PLATED THROUGH HOLES WITH COPPER, 0.001" MIN. / 0.0015" MAX. COPPER PLATE  
ALL HOLE SIZES ARE SPECIFIED AFTER PLATING. HOLE LOCATION TOLERANCES ARE +/-0.01" IN RELATION TO CENTER
- DO NOT ALTER ARTWORK e.g. TO ADD LOGO OR DATE CODE.
- SCORING FOR PANELIZED PCB:



APPROVALS			 <b>LINEAR TECHNOLOGY</b> 1630 MCCATHY BLVD MILPITAS, CA 95035 PH: (408)432-1900 LTC CONFIDENTIAL- FOR CUSTOMER USE ONLY
DRAWN	INIT	DATE	
CHECK			
DESIGN	KIM T.	03-07-06	
ENGR	KEVIN H.	03-07-06	
TITLE: FABRICATION DRAWING			<b>800KHz/2MHz BUCK REGULATOR</b>
SIZE	DEMO	DC857A-2 LT3481EMSE/EDD	
A			REV. A-2
SCALE = NONE			DES- 0000
			SHT 1 of 1