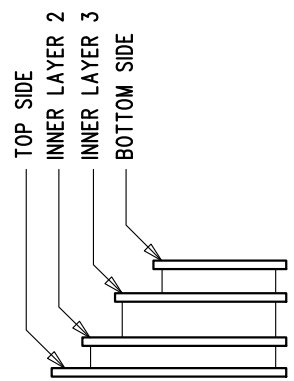
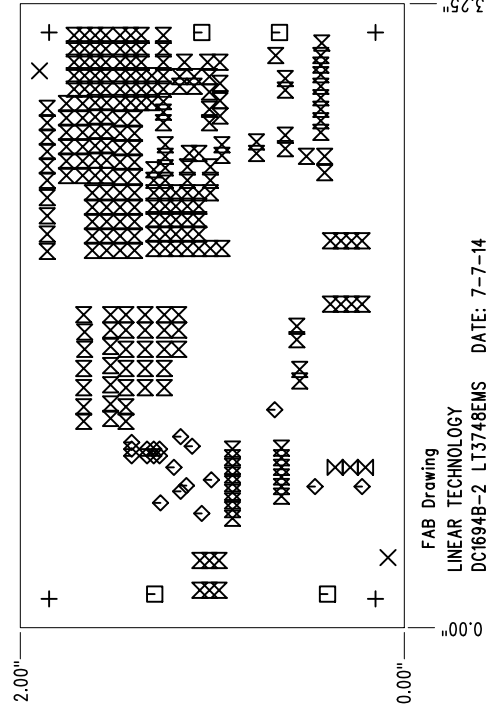
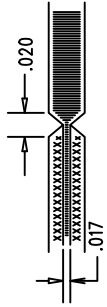


LAYER STRUCTURE



NOTES: UNLESS OTHERWISE SPECIFIED

- 1. FAB PER IPC-A-600.
- 2. MATERIAL: -EPOXY FIBERGLASS, NEMA GRADE FR-4  
-FINISHED THICKNESS TO BE 0.062" +/- .005"  
-TOTAL OF 4 LAYERS WITH 2 OZ. CU ON THE OUTER LAYERS AND 1 OZ. CU ON THE INNER LAYERS.  
-FLAMMABILITY RATING: 94 V-0 MINIMUM.
- 3. SIZE: CUT TO DIMENSIONS AND TOLERANCES SHOWN.  
0.00" ARE PRIMARY DATUMS.
- 4. DRILLING: -DRILL HOLES PER SCHEDULE. PLATE THROUGH HOLES WITH COPPER, 0.001" THICK MIN.  
-ALL HOLE SIZES ARE SPECIFIED AFTER PLATING.  
-HOLE LOCATION TOLERANCES ARE +/-0.003" IN RELATION TO CENTER
- 5. FINISH: -SMOBC USING LPI BOTH SIDES, COLOR GREEN.  
-GOLD IMMERSION BOTH SIDES.  
(LEAD FREE SOLDER CAN BE USED FOR PROTOTYPE)  
-FOR SILKSCREEN: USE WHITE NON-CONDUCTIVE INK.
- 6. DO NOT ALTER ARTWORK e.g. TO ADD LOGO OR DATE CODE.  
PAD SIZE CAN BE MODIFIED TO MEET END FINISH.
- 7. PCBs ARE TO BE RoHS COMPLIANT.
- 8. SCORING FOR PANELIZED PCB: (NOT FOR PROTOTYPE)



FAB Drawing  
LINEAR TECHNOLOGY  
DC1694B-2 LT3748EMS DATE: 7-7-14

SIZE	QTY	SYM	PLATED	TOL
0.187	4	+	NO	+/-0.003
0.07	2	X	NO	+/-0.003"
0.095	4	□	YES	+/-0.003
0.01	20	◇	YES	+/-0.003
0.035	3	⊗	YES	+/-0.003"
0.02	255	⊗	YES	+/-0.003"

UNLESS OTHERWISE SPECIFIED  
DIMENSIONS ARE IN INCHES  
TOLERANCES:  
0.XX" = ±0.01"  
0.XXX" = ±0.005"  
INTERPRET DIM AND TOL  
PER ASME Y14.5M-1994  
THIRD ANGLE PROJECTION

**LINEAR  
TECHNOLOGY**  
1830 MCCARTHY BLVD  
MILPITAS, CA 95035  
PH: (408) 432-1900  
www.linear.com  
LTC CONFIDENTIAL-  
FOR CUSTOMER USE ONLY

TITLE: FABRICATION DRAWING  
30W NON-OPTO FLYBACK CONVERTER

SIZE	IC NO.	REV
N/A	LT3748EMS	2
DEMO CIRCUIT 1694B		
FILENAME: DC1694B-2.PCB		SHT 1 OF 1

