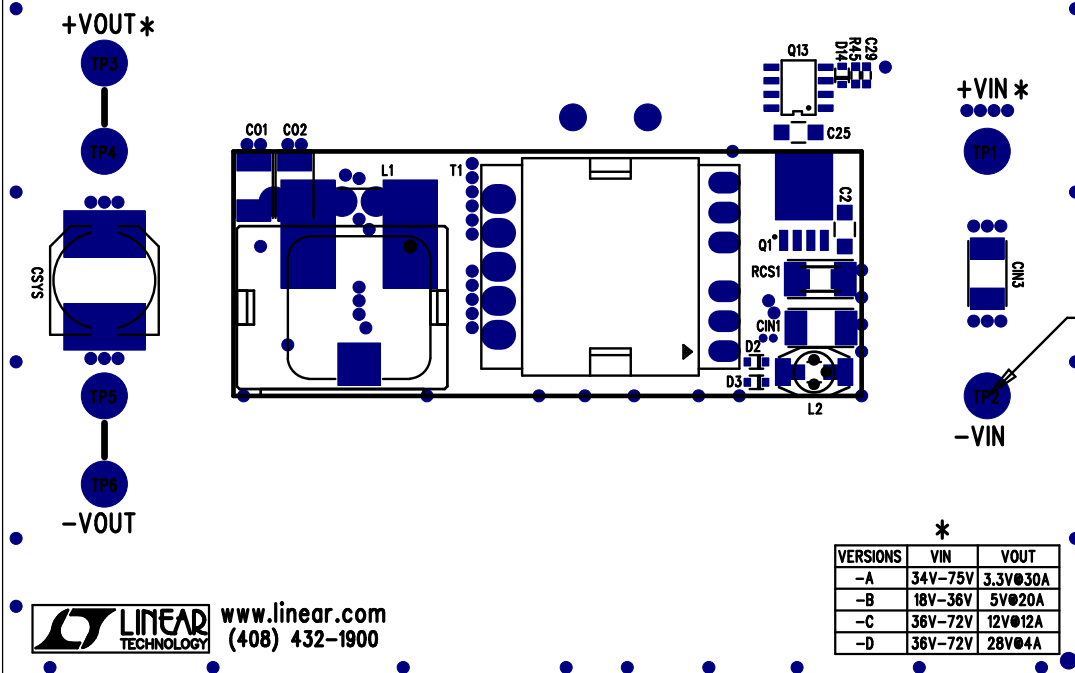


LT1952EGN-1, LTC3900CS8, LT4430ES6
ISOLATED DC/DC POWER CONVERTER
DEMO CIRCUIT 968A-■



LINEAR TECHNOLOGY
www.linear.com
(408) 432-1900

VERSIONS	VIN	VOUT
-A	34V-75V	3.3V@30A
-B	18V-36V	5V@20A
-C	36V-72V	12V@12A
-D	36V-72V	28V@4A

REVISIONS			
REV	DESCRIPTION	APPR	DATE
A-1	2ND PROTOTYPE	GP	08-02-06

FOR ASSEMBLY:
Install Hardware (TP1-TP6)
At These Locations (Top Side)

TURRETS : Mill-Max 2501-2

PCB : TOP

PCB : BOTTOM

APPROVALS

	INIT	DATE
DRAWN		
CHECK		
DESIGN	KIM T.	08-02-06
ENGR	GORAN P.	08-02-06

SCALE = NONE

LINEAR TECHNOLOGY
1630 McCarthy Blvd.
Milpitas, CA 95035
PH: (408)432-1900

TITLE: TOP ASSEMBLY DRAWING
ISOLATED DC/DC POWER CONVERTER

SIZE A DEMO DC968A-1 REV. A-1
LT1952EGN-1, LTC3900CS8, LT4430ES6

SHT 1 of 2