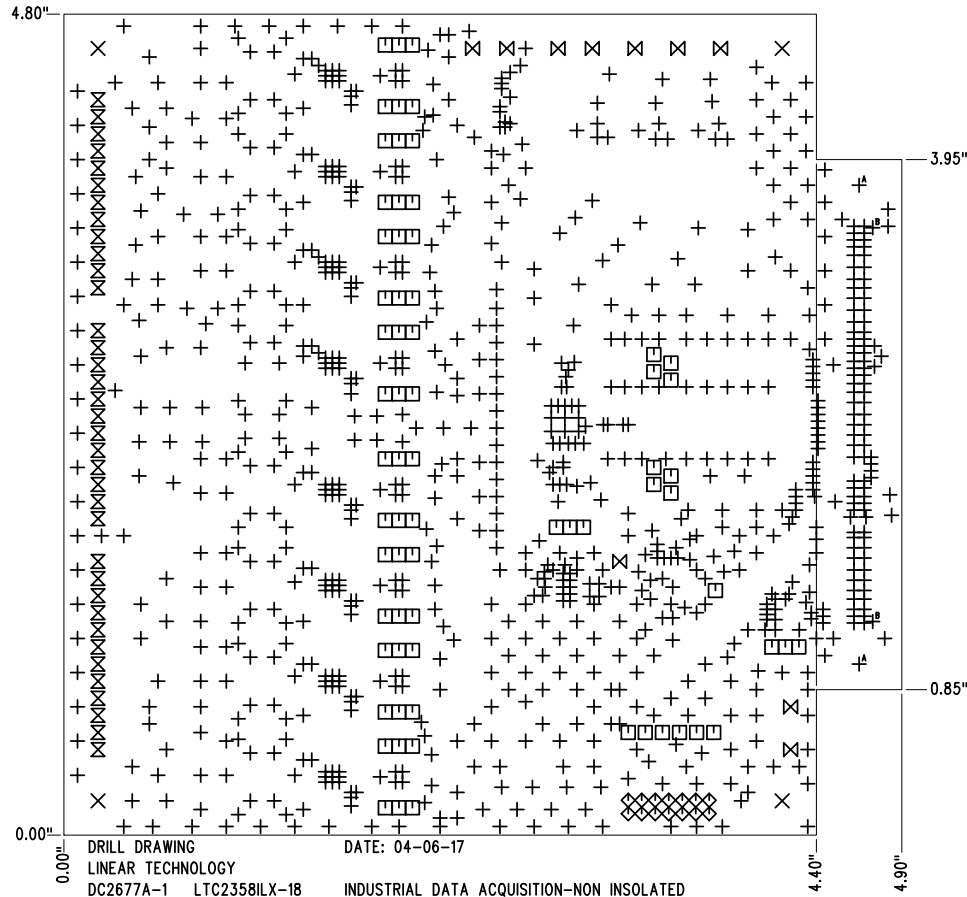
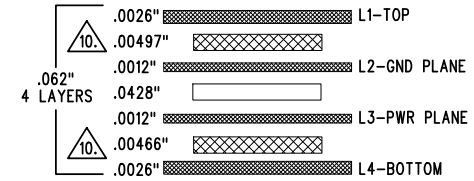


SHOWN FROM TOP SIDE

REVISION HISTORY				
ECO	REV	DESCRIPTION	APP. ENG.	DATE
-	1	1ST PROTOTYPE	NOE Q.	04-06-17

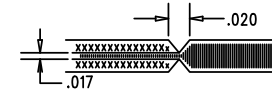


## LAYER STRUCTURE



## NOTES: UNLESS OTHERWISE SPECIFIED

- FAB PER IPC-A-600.
- MATERIAL: -LEAD FREE ASSEMBLY COMPLIANT, ISOLA FR-370HR OR EQUIVALENT.  
-FINISHED THICKNESS TO BE 0.062" +/- .005"  
-TOTAL OF 4 LAYERS WITH 2 OZ. CU ON THE OUTER LAYERS AND 1 OZ. CU ON THE INNER LAYERS.  
-FLAMMABILITY RATING: 94 V-0 MINIMUM.
- SIZE: CUT TO DIMENSIONS AND TOLERANCES SHOWN.  
0.00" ARE PRIMARY DATUMS.
- DRILLING: -DRILL HOLES PER SCHEDULE. PLATE THROUGH HOLES WITH COPPER, 0.001" THICK MIN.  
-ALL HOLE SIZES ARE SPECIFIED AFTER PLATING.  
-HOLE LOCATION TOLERANCES ARE +/- 0.003" IN RELATION TO CENTER
- FINISH: -SMOBC USING LPI BOTH SIDES, COLOR GREEN.  
-GOLD IMMERSION BOTH SIDES.  
-FOR SILKSCREENS: USE WHITE NON-CONDUCTIVE INK.
- DO NOT ALTER ARTWORK e.g. TO ADD LOGO OR DATE CODE. PAD SIZE CAN BE MODIFIED TO MEET END FINISH.
- PCBS ARE TO BE RoHS COMPLIANT.
- SCORING FOR PANELIZED PCB (PRODUCTION FAB ONLY):



- CONTROLLED 50 OHM +/-10% IMPEDANCE FOR LAYERS 1-2 AND 6-5 USING 0.009" TRACE AT 2GHz FREQ.

SUBJECT TO CHANGE BY MANUFACTURER, DEPENDING ON DIELECTRIC CONSTANT DEVIATIONS. PLEASE CONSULT LTC.

SIZE	QTY	SYM	PLATED	TOL
0.012	941	+	YES	+/-0.003"
0.125	4	X	NO	+/-0.003"
0.035	69	□	YES	+/-0.003"
0.04	14	◇	YES	+/-0.003"
0.045	36	⊗	YES	+/-0.003"
0.063	10	⊗	YES	+/-0.003"
0.125	2	+ <sup>A</sup>	YES	+/-0.003"
0.04	2	+ <sup>B</sup>	NO	+/-0.003"

UNLESS OTHERWISE SPECIFIED		APPROVALS		 1630 MCCARTHY BLVD MILPITAS, CA 95035 PH: (408)432-1900 www.linear.com LTC CONFIDENTIAL- FOR CUSTOMER USE ONLY	
-DIMENSIONS ARE IN INCHES		PCB DES.	KIM T.		
TOLERANCES:		APP ENG.	NOE Q.	TITLE: FABRICATION DRAWING	
0.XX" = ±0.01"				INDUSTRIAL DATA ACQUISITION-NON ISOLATED	
0.XXX" = ±0.005"				SIZE IC NO. LTC2358ILX-18	
INTERPRET DIM AND TOL				N/A DEMO CIRCUIT 2677A	
PER ASME Y14.5M-1994				REV 1	
THIRD ANGLE PROJECTION				SCALE = NONE	
				FILENAME: DC2677A-1.PCB	
				SHT 1 OF 1	