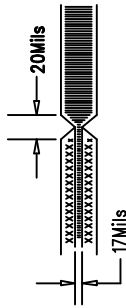


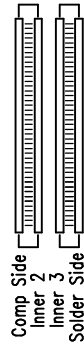
REVISIONS			
REV	DESCRIPTION	APPR	DATE

NOTES: Unless Otherwise Specified

1. MATERIAL: 4 LAYERS, 0.062" THK. FR-4 GLASS EPOXY 2 OZ. COPPER CLAD.
2. ALL HOLE SHALL BE PLATED THRU.
3. PLATE THRU HOLES WITH COPPER .0014 MIN. THICKNESS. ALL HOLE SIZES IN HOLE TABLE ARE AFTER PLATING.
4. SILKSCREEN: WITH WHITE EPOXY NON-CONDUCTIVE INK.
5. NO SILKSCREEN ALLOWED ON PADS LANDS.
6. SOLDER MASK: LPI, GREEN.
7. NO BLOCK SOLDERMASKING OF PADS ROWS.
8. DO NOT MAKE CHANGES ON SILKSCREEN, SUCH AS COMPANY LOGO, QC STAMPS.
9. DO NOT PLATE TOOLING(3PLCS), SCORING HOLES.  
(Reference Dwg No. DC205A For Tooling, Scoring & Fiducial Location)
10. SCORING:

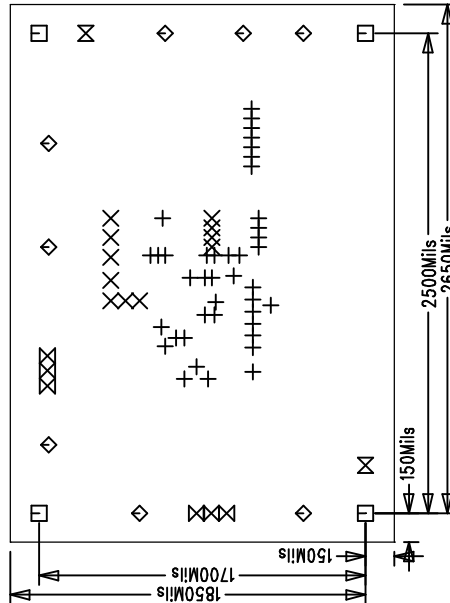


11. Layer Definition:



SIZE	QTY	SYM	PLTD
10	41	+	PLTD
15	11	X	PLTD
125	4	□	PLTD
94	8	◇	PLTD
31	6	⊗	PLTD
70	2	⊗	NPLTD

Demo Board 378 RevA



Fabrication Drawing

APPROVALS			 LINEAR TECHNOLOGY		1630 McCarthy Blvd. Milpitas, CA 95035 PH: (408)432-1900	
	INIT	DATE	TITLE: LTC1778CGN No Resense™ Wide Operating Range DC/DC Converter			
DRAWN						
CHECK						
DESIGN	RmB					
ENGR	Goran P.					
SCALE = NONE			SIZE	Demob Board 378	REV. A	
			NONE			
			DESIGN #230415			SHT 1 of 1