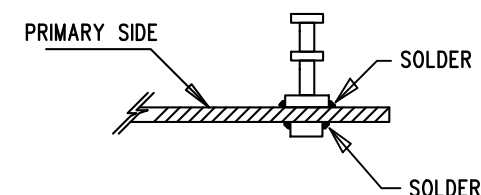


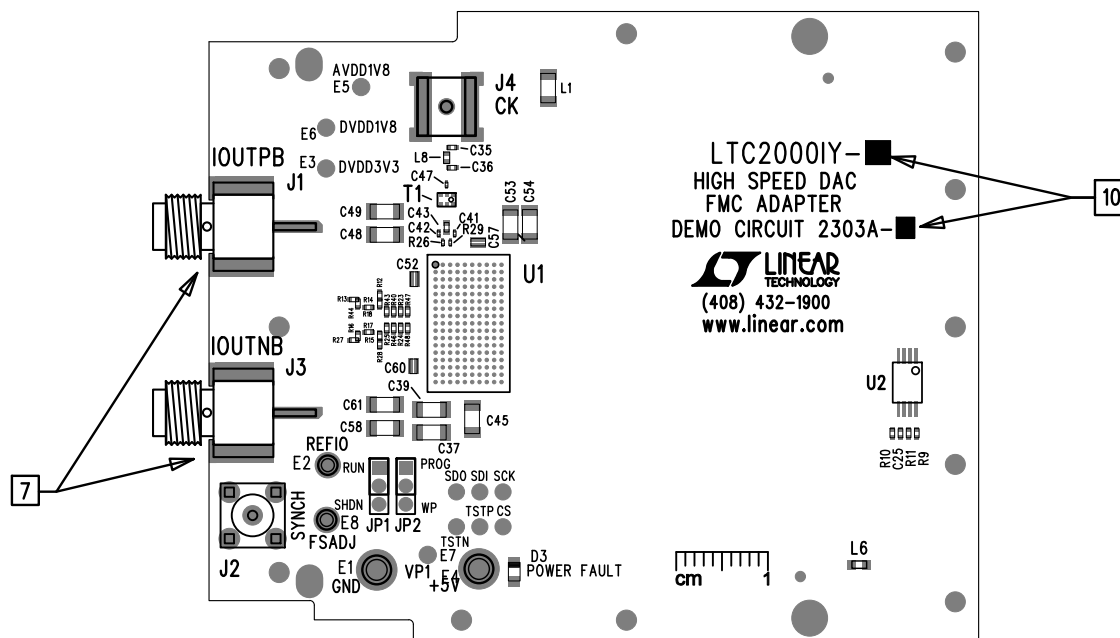
REVISION HISTORY			
ECO	REV	DESCRIPTION	APP. ENG.

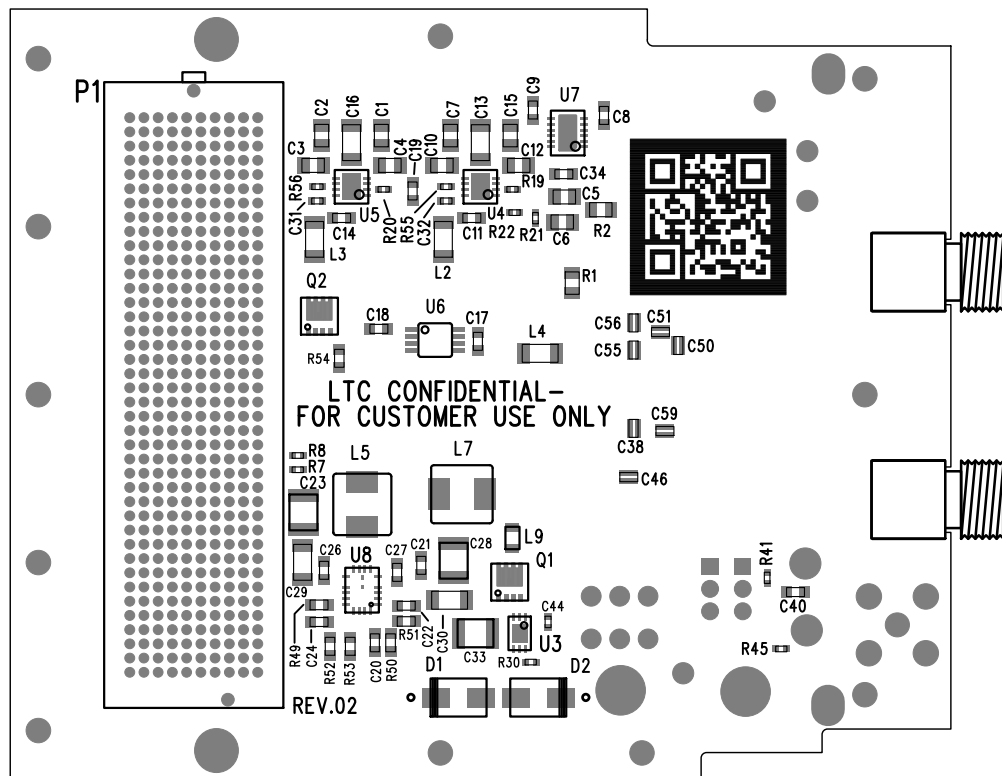
NOTES: UNLESS OTHERWISE SPECIFIED


1. WORKMANSHIP SHALL BE IN ACCORDANCE WITH IPC-A-610.
2. INSTALL SHUNTS ON JP1-JP4, JP6 AS DEPICTED.
3. UNSTUFFED LAND PATTERNS SHALL BE FREE OF SOLDER. MASK THE SOLDER STENCIL AT THESE LOCATIONS.
4. DEPANELIZE BOARDS AFTER ASSEMBLY AND ROUTE-OUT THE BREAKOUT TABS ON ALL BOARD EDGES.
5. ASSEMBLY PROCESS SHALL INCLUDE SMD REFLOW SOLDER BOTH SIDES. MAXIMUM TEMPERATURE SHALL NOT EXCEED 240 DEGREES CELSIUS.
6. INSTALL TURRETS E1,E2,E4,E8 AS SHOWN:



7. INSTALL J1, J3 ON PRIMARY SIDE, MOUNTED INSIDE CUTOUT AREAS AS DEPICTED.
8. INSTALL J2, J4 ON PRIMARY SIDE.
9. ANY ASSEMBLY/QA STAMPS SHALL BE ON SECONDARY SIDE.





APPROVALS		 LINEAR TECHNOLOGY 1630 MCCARTHY BLVD MILPITAS, CA 95035 PH: (408)432-1900 www.linear.com LTC CONFIDENTIAL - FOR CUSTOMER USE ONLY	
PCB DES.	M.HAWKINS		
APP ENG.	C. MAYOTT	TITLE: ASSEMBLY DRAWING, SECONDARY SIDE LTC2000 HIGH SPEED DAC FMC ADAPTER	
SCALE = NONE		SIZE N/A	DEMO CIRCUIT 2303A DWG. NO. 705-DC2303A
			DWG. REV. 02 SHT 2 of 2