

REVISION HISTORY			
ECO	REV	DESCRIPTION	APPROVAL
	4	PRODUCTION	05/12/11

NOTES: UNLESS OTHERWISE SPECIFIED,

1. WORKMANSHIP SHALL BE IN ACCORDANCE WITH IPC-A-610.
2. ASSEMBLY PROCESS SHALL INCLUDE REFLOW SOLDER SMD. MAXIMUM SOLDER TEMPERATURE, 240 DEG. C.
3. PARTS TO OMIT WILL BE SPECIFIED ON THE BILL OF MATERIALS. LOCATIONS OF OMITTED PARTS SHALL BE FREE OF SOLDER. MASK THE SOLDER STENCIL WHERE SMT PARTS ARE OMITTED.
4. INSTALL SHUNTS AS SHOWN ON ASSY DRAWING.
5. DEPANELIZE BOARDS AFTER ASSEMBLY AND ROUTE-OUT THE BREAKOUT TABS ON FOUR SIDES OF THE BOARD EDGE.
6. DO NOT APPLY ANY KIND OF ASSEMBLY STAMP OR QA STAMP TO ANY BOARD.

7. INSTALL CONNECTOR PIN 142-0701-846 AS SHOWN:

8. INSTALL 4 STANDOFFS AT 4 CORNERS AS SHOWN: MH1-MH4

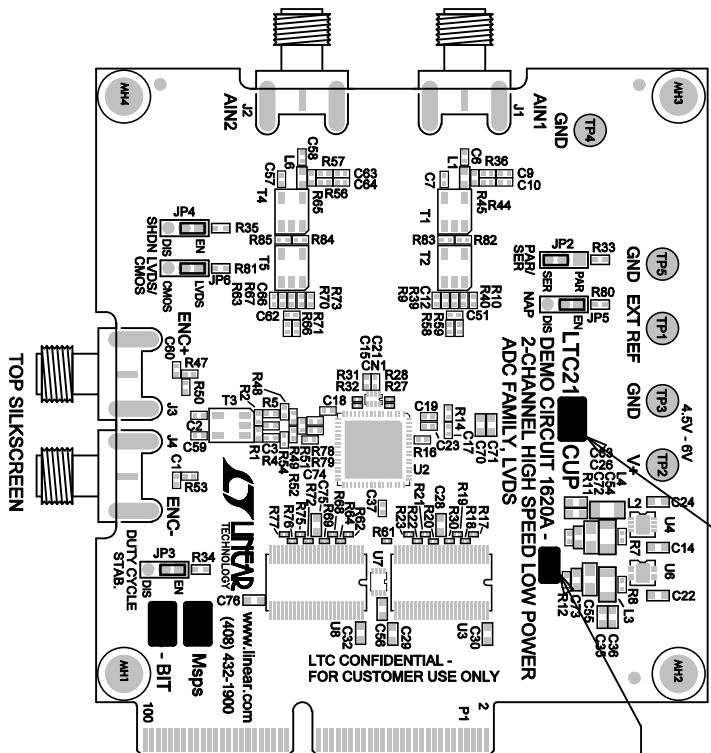
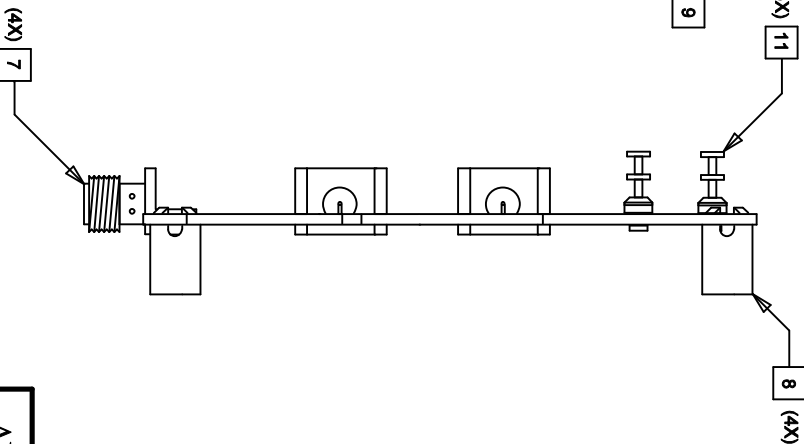
9. MARK APPROPRIATE ASSEMBLY LETTER.

10. MARK APPROPRIATE I.C. NUMBER

11. INSTALL TURRETS AS SHOWN.


12. MAX. SOLDER TEMPERATURE IS 240 DEG. C.

ASSY	U2	SAMPLE RATE	No. of BITS	FREQUENCY R
-A	LTC2186CUP	125Mps	16	5 < AIN < 140
-B	LTC2184CUP	105Mps	16	5 < AIN < 140
-C	LTC2183CUP	80Mps	16	5 < AIN < 140
-D	LTC2182CUP	65Mps	16	5 < AIN < 140
-E	LTC2181CUP	40Mps	16	5 < AIN < 140
-F	LTC2180CUP	25Mps	16	5 < AIN < 140



ASSY	U2	SAMPLE RATE	No. of BITS	FREQUENCY R
-G	LTC2145-14CUP	125Mps	14	5 < AIN < 140
-H	LTC2144-14CUP	105Mps	14	5 < AIN < 140
-I	LTC2143-14CUP	80Mps	14	5 < AIN < 140
-J	LTC2142-14CUP	65Mps	14	5 < AIN < 140
-K	LTC2141-14CUP	40Mps	14	5 < AIN < 140
-L	LTC2140-14CUP	25Mps	14	5 < AIN < 140

ASSY	U2	SAMPLE RATE	No. of BITS	FREQUENCY R
-M	LTC2145-12CUP	125Mps	12	5 < AIN < 140
-N	LTC2144-12CUP	105Mps	12	5 < AIN < 140
-O	LTC2143-12CUP	80Mps	12	5 < AIN < 140
-P	LTC2142-12CUP	65Mps	12	5 < AIN < 140
-Q	LTC2141-12CUP	40Mps	12	5 < AIN < 140
-R	LTC2140-12CUP	25Mps	12	5 < AIN < 140

APPROVALS		 <div>1620 MCCARTHY BLVD MILPITAS, CA 95035 PH: (408) 532-1800 www.linear.com LTC CONFIDENTIAL- FOR CUSTOMER USE ONLY</div>	
PCB DES.	MI		
APP. ENG.	CLARENCE M.		
		TITLE: TOP ASSEMBLY DRAWING, 2-CHANNEL HIGH SPEED LOW POWER ADC FAMILY, LVDS	
SIZE	IC NO	LTC21XXCUP FAMILY DEMO CIRCUIT 1620A	REV
N/A			4
SCALE: NONE		FILENAME: 1620A-4-PCB	SHT 1 of 2



1630 MCCARTHY BLVD  
MILPITAS, CA 95035  
PH: (408) 432-1800  
WWW.LITEAD.COM  
LTC CONFIDENTIAL -  
FOR CUSTOMER USE ONLY