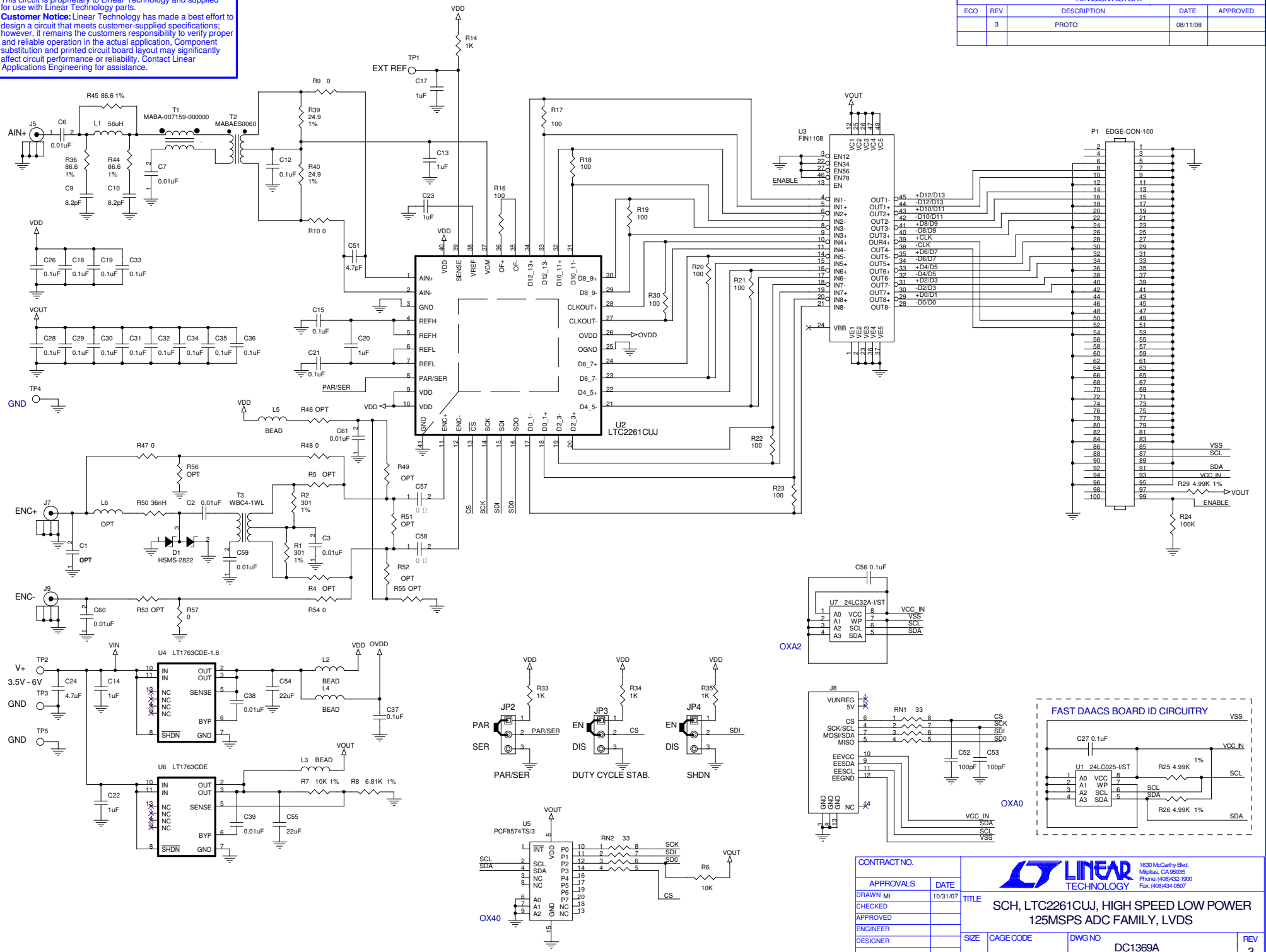


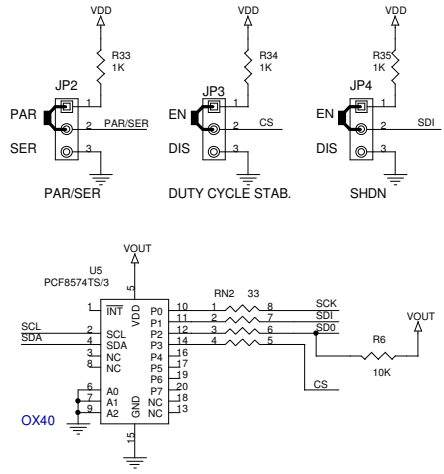
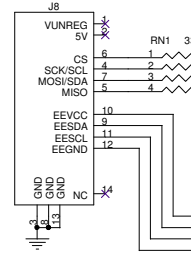
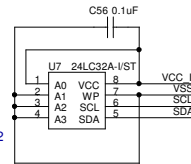
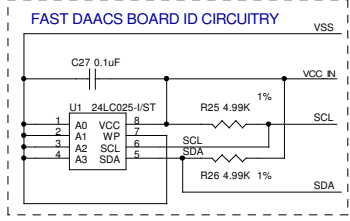
This circuit is proprietary to Linear Technology and supplied for use with Linear Technology parts.
Customer Notice: Linear Technology has made a best effort to design a circuit that meets customer-supplied specifications; however, it remains the customer's responsibility to verify proper and reliable operation in the actual application. Component substitution and printed circuit board layout may significantly affect circuit performance or reliability. Contact Linear Applications Engineering for assistance.

REVISION HISTORY				
ECO	REV	DESCRIPTION	DATE	APPROVED
	3	PROTO	08/11/08	



APPROVALS		DATE
CHECKED		10/31/07
APPROVED		
ENGINEER		
DESIGNER		

		1630 McCarthy Blvd. Milpitas, CA 95035 Phone: (408)432-1900 Fax: (408)434-0507	
TITLE SCH, LTC2261CUJ, HIGH SPEED LOW POWER 125MSPS ADC FAMILY, LVDS			
SIZE	CAGE CODE	DWG NO	REV
		DC1369A	3
Tuesday, December 09, 2008		SCALE: NONE	FILENAME: 1369A-3.DSN
		SHEET	1 OF 2



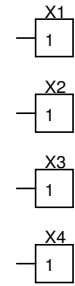
CONTRACT NO.	
APPROVALS	DATE
DRAWN MI	10/31/07
CHECKED	
APPROVED	
ENGINEER	
DESIGNER	
Tuesday, December 09, 2008	

This circuit is proprietary to Linear Technology and supplied for use with Linear Technology parts.
Customer Notice: Linear Technology has made a best effort to design a circuit that meets customer-supplied specifications; however, it remains the customers responsibility to verify proper and reliable operation in the actual application, Component substitution and printed circuit board layout may significantly affect circuit performance or reliability. Contact Linear Applications Engineering for assistance.


REVISION HISTORY				
ECO	REV	DESCRIPTION	DATE	APPROVED
	3	PROTO	08/11/08	

ASSY	ADC	SAMPLE RATE	No. of BITS	FREQUENCY R
-A	LTC2261-14	125Msps	14	5 < AIN < 170
-B	LTC2261-14	105Msps	14	5 < AIN < 170
-C	LTC2259-14	80Msps	14	5 < AIN < 170
-D	LTC2258-14	65Msps	14	5 < AIN < 170
-E	LTC2257-14	40Msps	14	5 < AIN < 170
-F	LTC2256-14	25Msps	14	5 < AIN < 170
-G	LTC2261-12	125Msps	12	5 < AIN < 170
-H	LTC2260-12	105Msps	12	5 < AIN < 170
-I	LTC2259-12	80Msps	12	5 < AIN < 170
-J	LTC2258-12	65Msps	12	5 < AIN < 170
-K	LTC2257-12	40Msps	12	5 < AIN < 170
-L	LTC2256-12	25Msps	12	5 < AIN < 170
-M	LTC2262-14	150Msps	14	5 < AIN < 170
-N	LTC2262-12	150Msps	12	5 < AIN < 170

USED TO MANUFACTURE PCB



REPRESENTS STAND OFFS

CONTRACT NO.		 1630 McCarthy Blvd. Milpitas, CA 95035 Phone: (408)432-1900 Fax: (408)434-0507			
APPROVALS	DATE				
DRAWN MI	10/31/07	TITLE SCH, LTC2261CUJ, HIGH SPEED LOW POWER 125MSPS ADC FAMILY, LVDS			
CHECKED					
APPROVED					
ENGINEER					
DESIGNER		SIZE	CAGE CODE	DWG NO	REV
				DC1369A	3
Tuesday, December 09, 2008		SCALE: NONE	FILENAME: 1369A-3.DSN	SHEET 2	OF 2