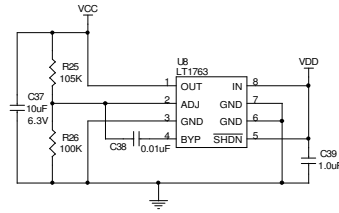
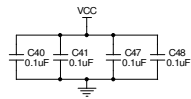
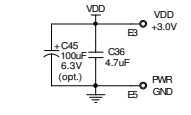


* VERSION TABLE

ASSEMBLY TYPE	U1	BITS	MSPS	R5,R8,R18,R24	C6,C31	T1,T2
DC851A-A	LTC2299IUP	14	80	24.9 ohm	12pF	ETC1-1T
DC851A-B	LTC2298IUP	14	65	24.9 ohm	12pF	ETC1-1T
DC851A-C	LTC2297IUP	14	40	24.9 ohm	12pF	ETC1-1T
DC851A-D	LTC2296IUP	14	25	24.9 ohm	12pF	ETC1-1T
DC851A-E	LTC2295IUP	14	10	24.9 ohm	12pF	ETC1-1T
DC851A-F	LTC2299IUP	14	80	12.4 ohm	8.2pF	ETC1-1-13
DC851A-G	LTC2298IUP	14	65	12.4 ohm	8.2pF	ETC1-1-13
DC851A-H	LTC2294IUP	12	80	24.9 ohm	12pF	ETC1-1T
DC851A-I	LTC2293IUP	12	65	24.9 ohm	12pF	ETC1-1T
DC851A-J	LTC2292IUP	12	40	24.9 ohm	12pF	ETC1-1T
DC851A-K	LTC2291IUP	12	25	24.9 ohm	12pF	ETC1-1T
DC851A-L	LTC2290IUP	12	10	24.9 ohm	12pF	ETC1-1T
DC851A-M	LTC2294IUP	12	80	12.4 ohm	8.2pF	ETC1-1-13
DC851A-N	LTC2293IUP	12	65	12.4 ohm	8.2pF	ETC1-1-13
DC851A-O	LTC2289IUP	10	80	24.9 ohm	12pF	ETC1-1T
DC851A-P	LTC2288IUP	10	65	24.9 ohm	12pF	ETC1-1T
DC851A-Q	LTC2287IUP	10	40	24.9 ohm	12pF	ETC1-1T
DC851A-R	LTC2286IUP	10	25	24.9 ohm	12pF	ETC1-1T
DC851A-S	LTC2284IUP	14	105	24.9 ohm	12pF	ETC1-1T
DC851A-T	LTC2284IUP	14	105	12.4 ohm	8.2pF	ETC1-1-13
DC851A-U	LTC2282IUP	12	105	24.9 ohm	12pF	ETC1-1T
DC851A-V	LTC2282IUP	12	105	12.4 ohm	8.2pF	ETC1-1-13
DC851A-W	LTC2280IUP	10	105	24.9 ohm	12pF	ETC1-1T
DC851A-X	LTC2280IUP	10	105	12.4 ohm	8.2pF	ETC1-1-13



CUSTOMER NOTICE

LINEAR TECHNOLOGY HAS MADE A BEST EFFORT TO DESIGN A CIRCUIT THAT MEETS CUSTOMER-SUPPLIED SPECIFICATIONS; HOWEVER, IT REMAINS THE CUSTOMER'S RESPONSIBILITY TO VERIFY PROPER AND RELIABLE OPERATION IN THE ACTUAL APPLICATION. COMPONENT SUBSTITUTION AND PRINTED CIRCUIT BOARD LAYOUT MAY SIGNIFICANTLY AFFECT CIRCUIT PERFORMANCE OR RELIABILITY. CONTACT LINEAR TECHNOLOGY APPLICATIONS ENGINEERING FOR ASSISTANCE.

THIS CIRCUIT IS PROPRIETARY TO LINEAR TECHNOLOGY AND SUPPLIED FOR USE WITH LINEAR TECHNOLOGY PARTS.

CONTRACT NO.		DATE	
APPROVALS	June Wu	11/1/04	
DRAWN		TITLE	
CHECKED		LTC2298 FAMILY	
APPROVED		HIGH SPEED DUAL ADC	
ENGINEER	Mark Thoren	SIZE	CAGE CODE
DESIGNER		DWG NO	DC851A
Friday, September 09, 2005		SCALE:	FILENAME:
SHEET 1		CF 1	

1630 McAfee Blvd
Milpitas, CA 95025
Phone: 408.426.1900
Fax: 408.426.1907