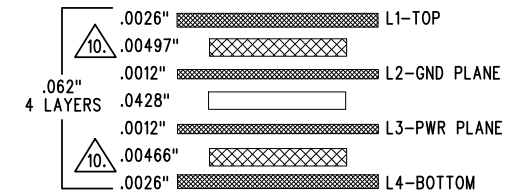


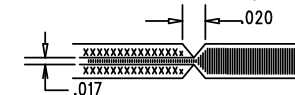
REVISION HISTORY				
ECO	REV	DESCRIPTION	APP. ENG.	DATE
-	2	PRODUCTION	DOUG S.	03-31-14

## LAYER STRUCTURE



## NOTES: UNLESS OTHERWISE SPECIFIED

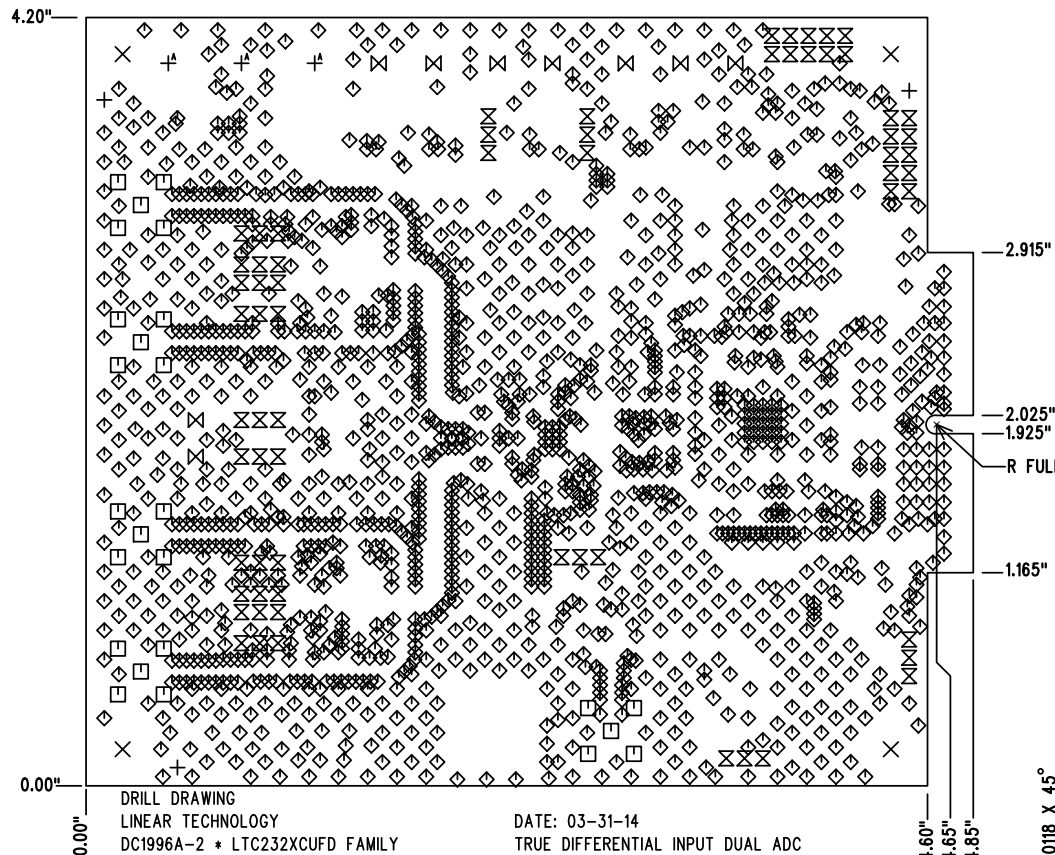
- FAB PER IPC-A-600.
- MATERIAL: -LEAD FREE ASSEMBLY COMPLIANT, ISOLA FR-370HR OR EQUIVALENT.  
-FINISHED THICKNESS TO BE 0.062" +/- .005"  
-TOTAL OF 4 LAYERS WITH 2 OZ. CU ON THE OUTER LAYERS AND 1 OZ. CU ON THE INNER LAYERS.  
-FLAMMABILITY RATING: 94 V-0 MINIMUM.
- SIZE: CUT TO DIMENSIONS AND TOLERANCES SHOWN.  
0.00" ARE PRIMARY DATUMS.
- DRILLING: -DRILL HOLES PER SCHEDULE. PLATE THROUGH HOLES WITH COPPER, 0.001" THICK MIN.  
-ALL HOLE SIZES ARE SPECIFIED AFTER PLATING.  
-HOLE LOCATION TOLERANCES ARE +/-0.003" IN RELATION TO CENTER
- FINISH: -SMOBC USING LPI BOTH SIDES, COLOR GREEN.  
-GOLD IMMERSION BOTH SIDES.  
-FOR SILKSCREENS: USE WHITE NON-CONDUCTIVE INK.
- DO NOT ALTER ARTWORK e.g. TO ADD LOGO OR DATE CODE. PAD SIZE CAN BE MODIFIED TO MEET END FINISH.
- PCBS ARE TO BE RoHS COMPLIANT.
- SCORING FOR PANELIZED PCB (PRODUCTION FAB ONLY):



- CONTROLLED 50 OHM +/-10% IMPEDANCE FOR LAYERS 1-2 USING 0.009" TRACE AT 2GHz FREQ.

- SUBJECT TO CHANGE BY MANUFACTURER, DEPENDING ON DIELECTRIC CONSTANT DEVIATIONS. PLEASE CONSULT LTC.

- FINGER AREA: GOLD PLATE TO MIN. OF 0.00003 INCHES. PER MIL-G-45204, TYP II, CL1, GRADE C, OVER 0.0002 INCHES LOW STRESS NICKEL PER QQ-N-290, CL2.



SIZE	QTY	SYM	PLATED	TOL
0.07	3	+	NO	+/-0.003"
0.19	4	X	NO	+/-0.003"
0.055	25	□	YES	+/-0.003"
0.012	1668	◇	YES	+/-0.003"
0.035	65	⊗	YES	+/-0.003"
0.063	9	⊗	YES	+/-0.003"
0.094	3	+ <sup>A</sup>	YES	+/-0.003"

UNLESS OTHERWISE SPECIFIED		APPROVALS			
DIMENSIONS ARE IN INCHES		PCB DES.	KIM T.		
TOLERANCES:		APP ENG.	DOUG S.	TITLE: FABRICATION DRAWING	
0.XX" = ±0.01"				TRUE DIFFERENTIAL INPUT DUAL ADC	
0.XXX" = ±0.005"					
INTERPRET DIM AND TOL PER ASME Y14.5M-1994				SIZE	IC NO.
THIRD ANGLE PROJECTION				N/A	LTC232XCUIFD FAMILY
					DEMO CIRCUIT 1996A
					REV 2
		SCALE = NONE		FILENAME: DC1996A-2.PCB	SHT 1 OF 1

1630 MCCARTHY BLVD  
MILPITAS, CA 95035  
PH: (408)432-1900  
www.linear.com  
LTC CONFIDENTIAL-  
FOR CUSTOMER USE ONLY