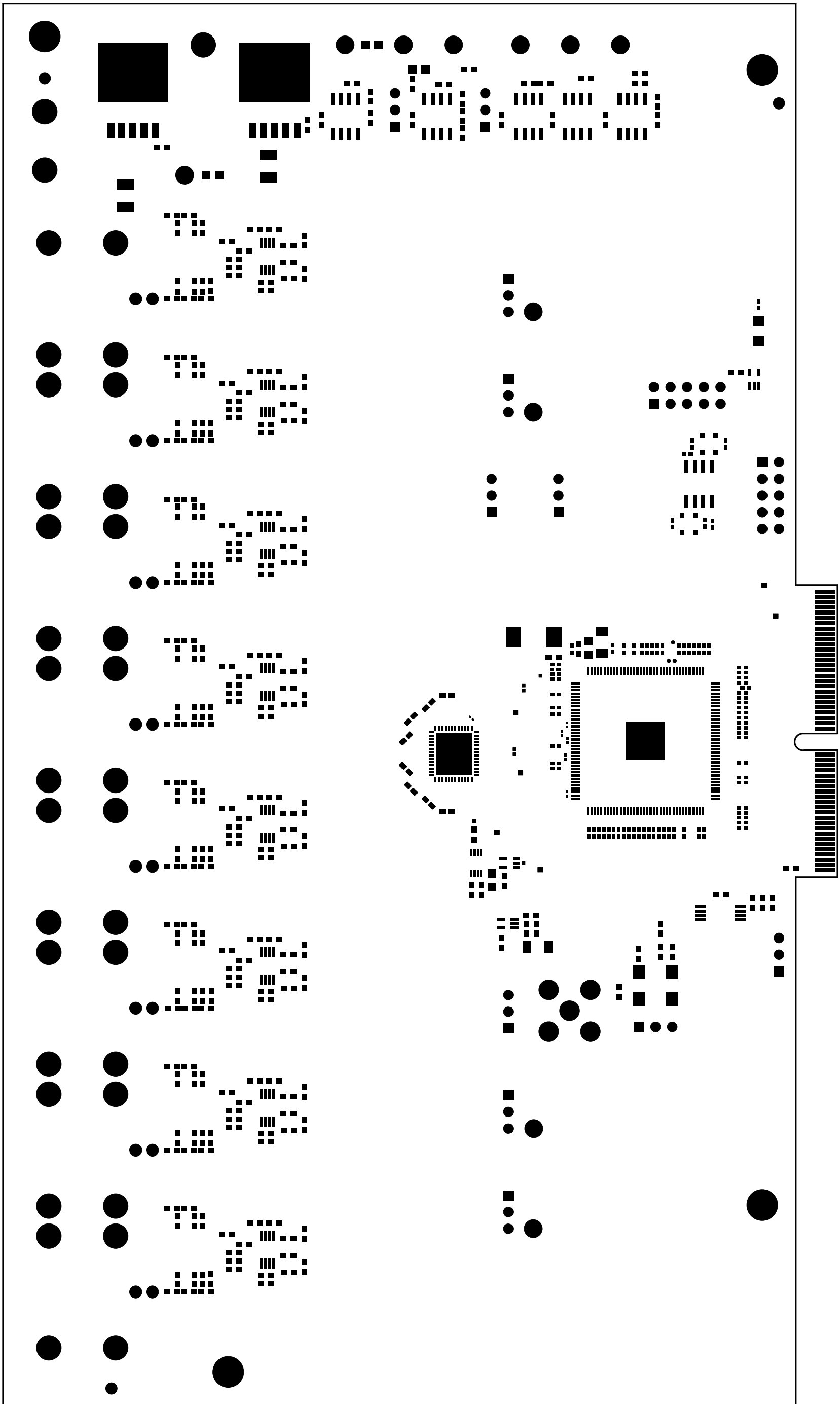


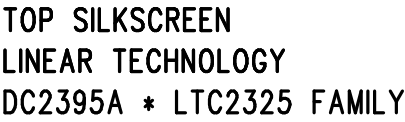
TOPEPASTE TOP LAYER
LINEAR TECHNOLOGY
DC2395A * LTC2325 FAMILY

DATE: 06-01-16
TRUE DIFFERENTIAL INPUT OCTAL ADC

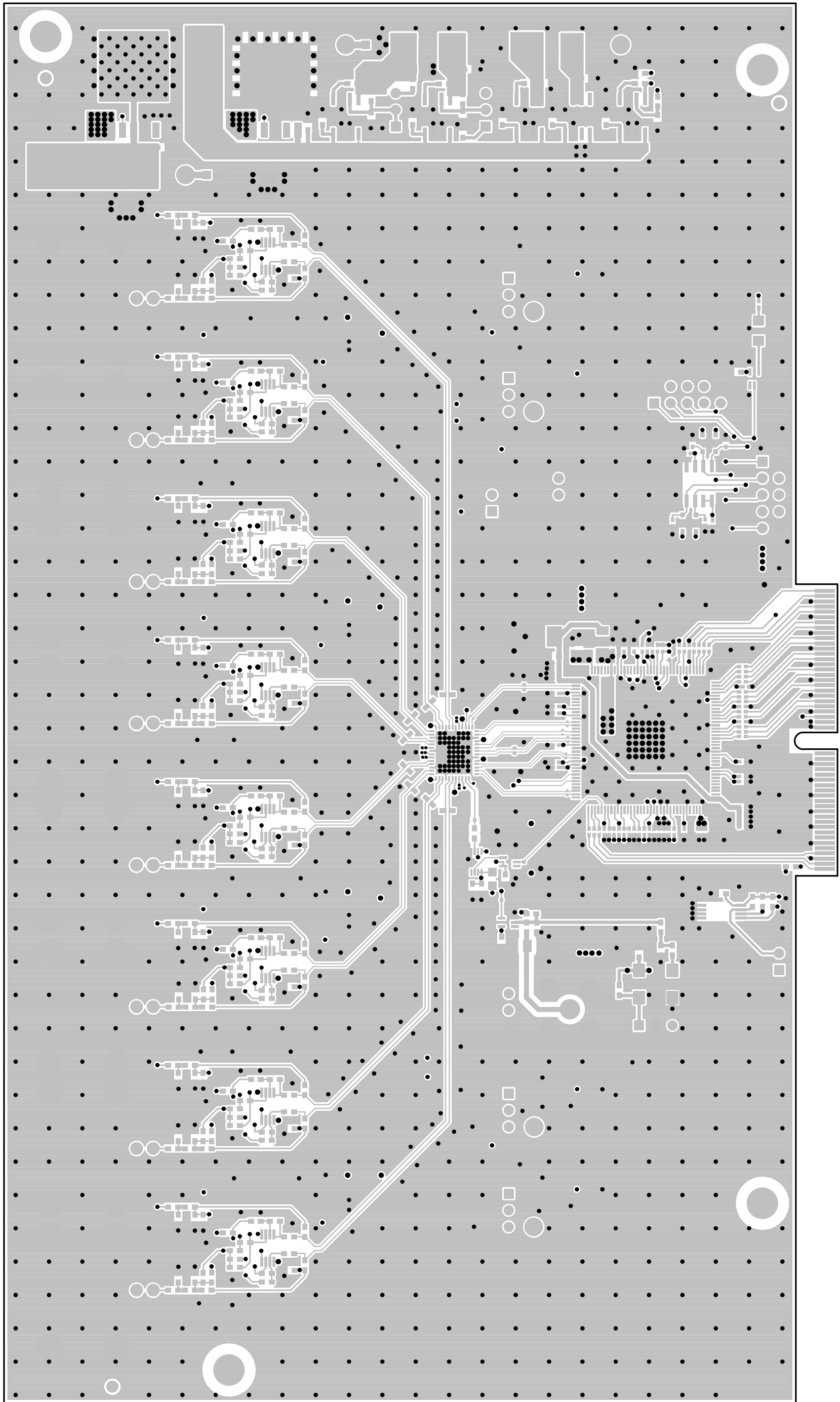


TOPEMASK- TOP LAYER
LINEAR TECHNOLOGY
DC2395A * LTC2325 FAMILY

DATE: 06-01-16
TRUE DIFFERENTIAL INPUT OCTAL ADC

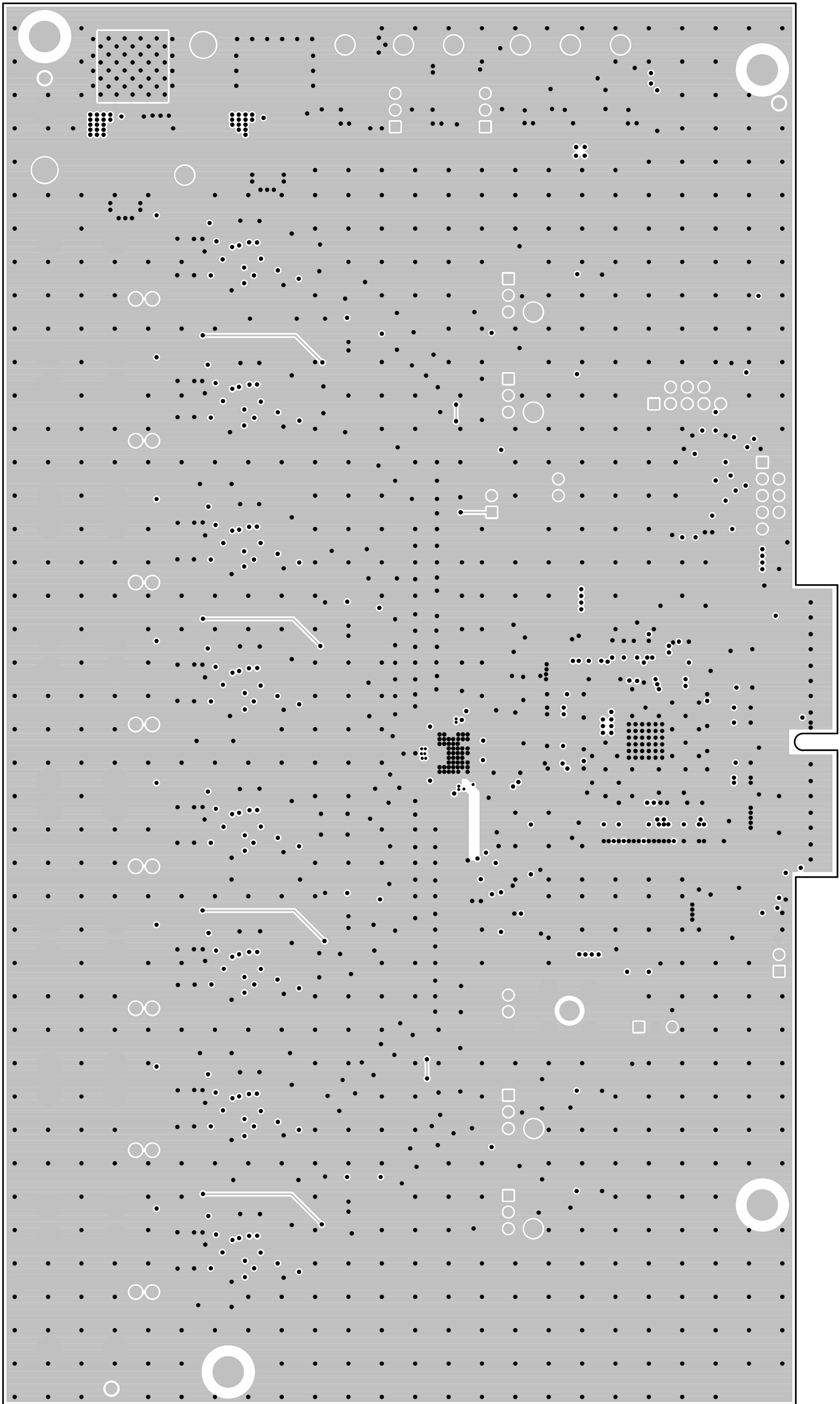


DATE: 06-01-16
TRUE DIFFERENTIAL INPUT OCTAL ADC



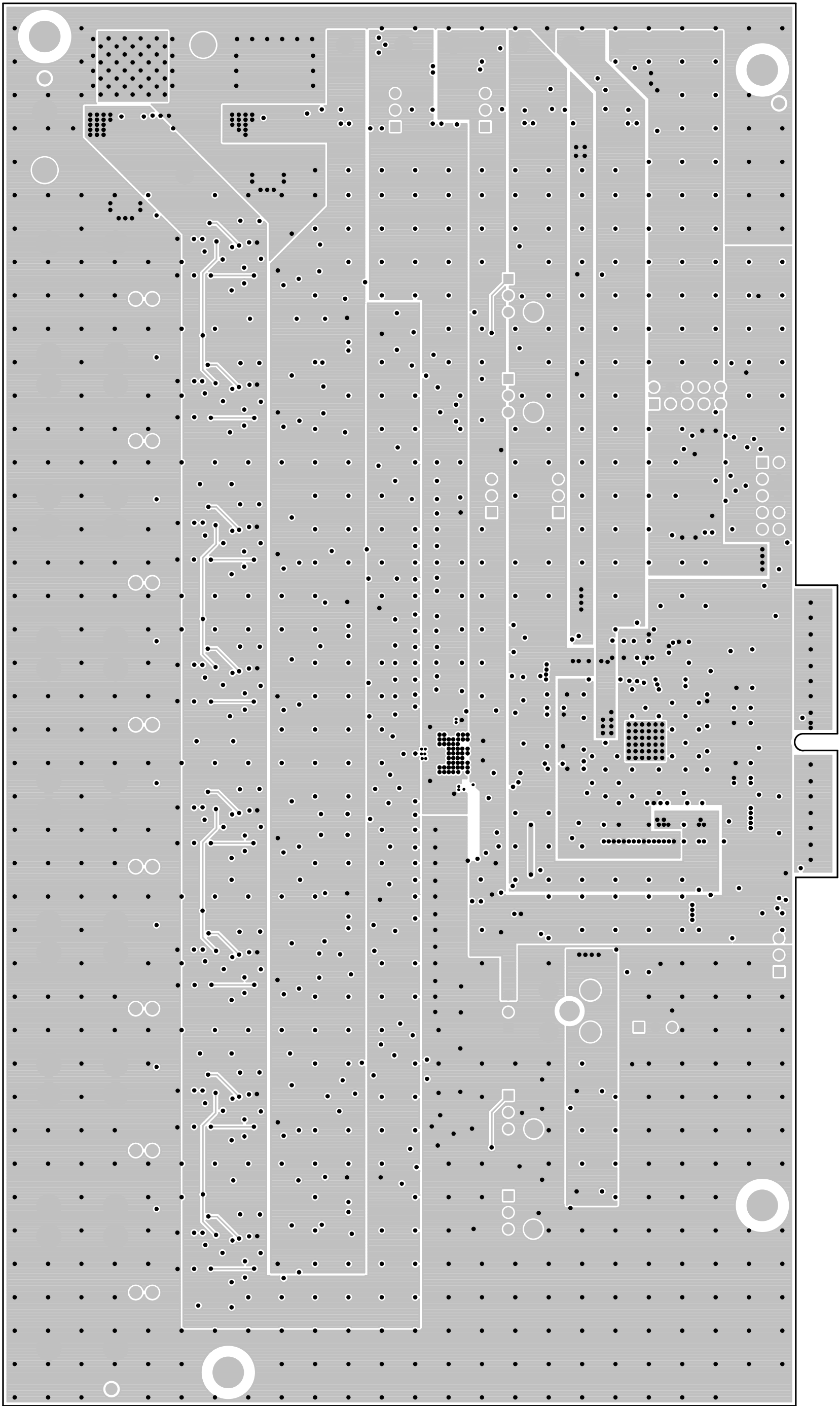
LAYER 1 – TOP LAYER
LINEAR TECHNOLOGY
DC2395A * LTC2325 FAMILY

DATE: 06-01-16
TRUE DIFFERENTIAL INPUT OCTAL ADC



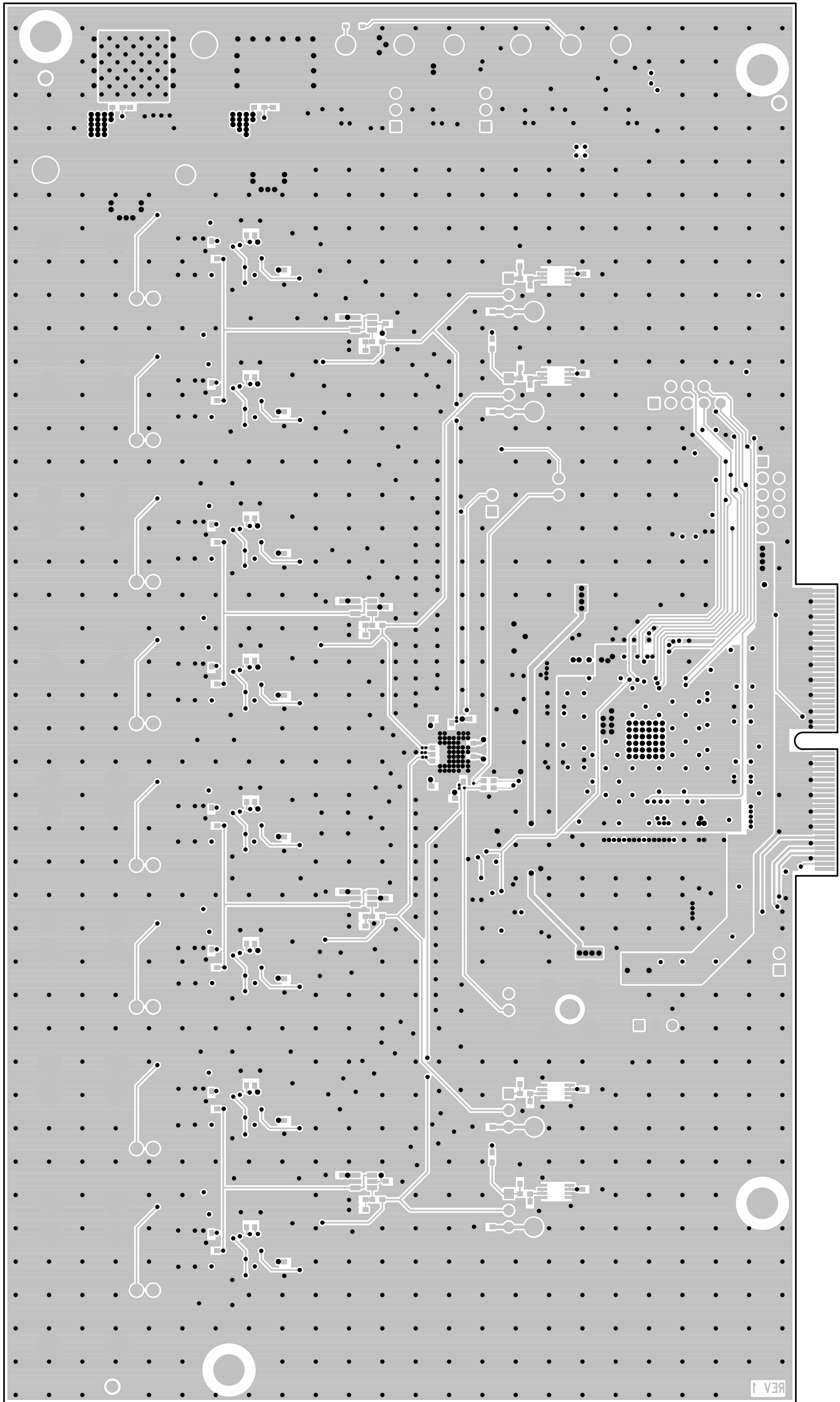
LAYER 2 – GND PLANE
LINEAR TECHNOLOGY
DC2395A * LTC2325 FAMILY

DATE: 06-01-16
TRUE DIFFERENTIAL INPUT OCTAL ADC



LAYER 3 – PWR PLANE
LINEAR TECHNOLOGY
DC2395A * LTC2325 FAMILY

DATE: 06-01-16
TRUE DIFFERENTIAL INPUT OCTAL ADC

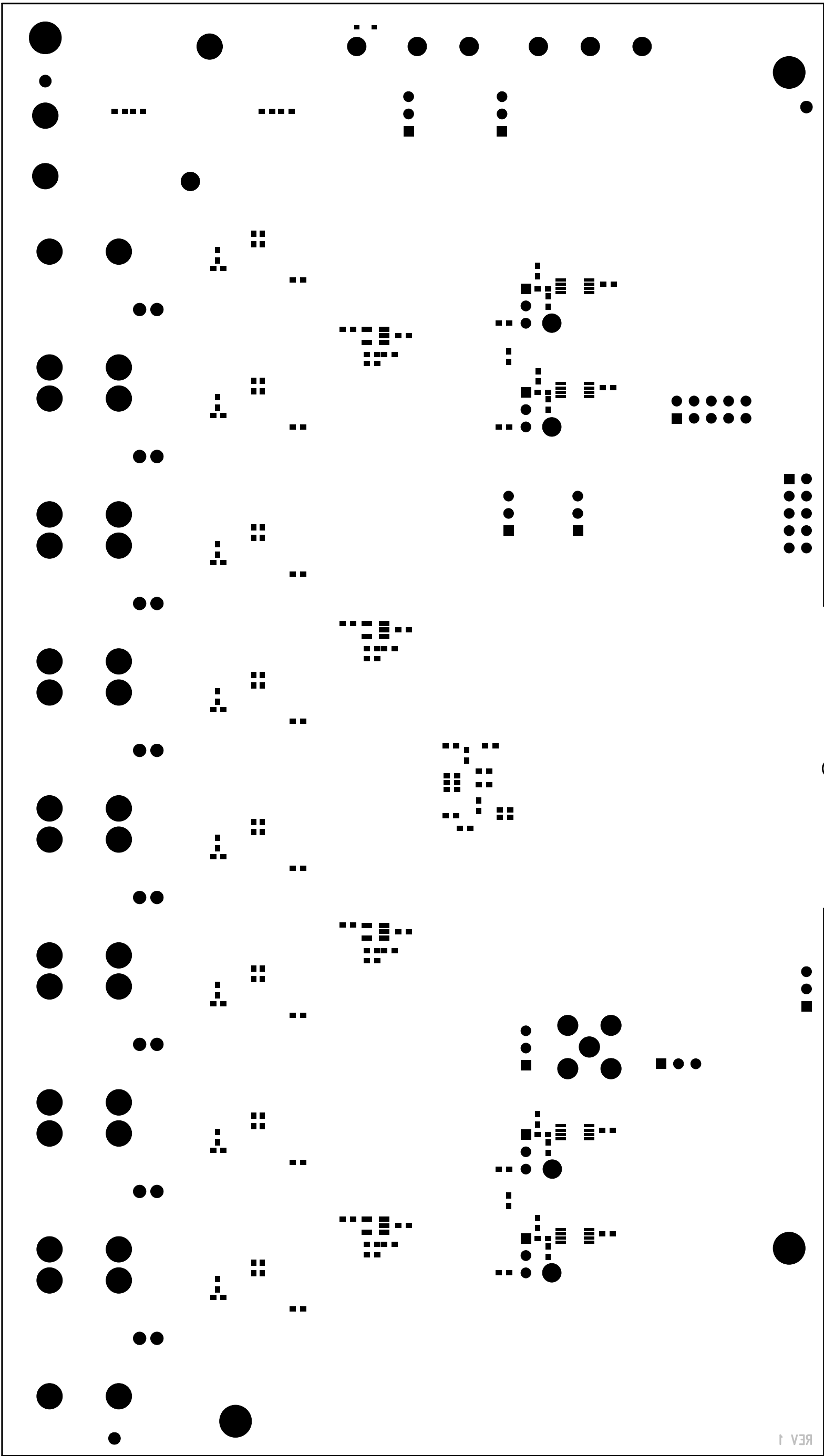


LAYER 4 – BOTTOM LAYER
LINEAR TECHNOLOGY
DC2395A * LTC2325 FAMILY

DATE: 06-01-16
TRUE DIFFERENTIAL INPUT OCTAL ADC



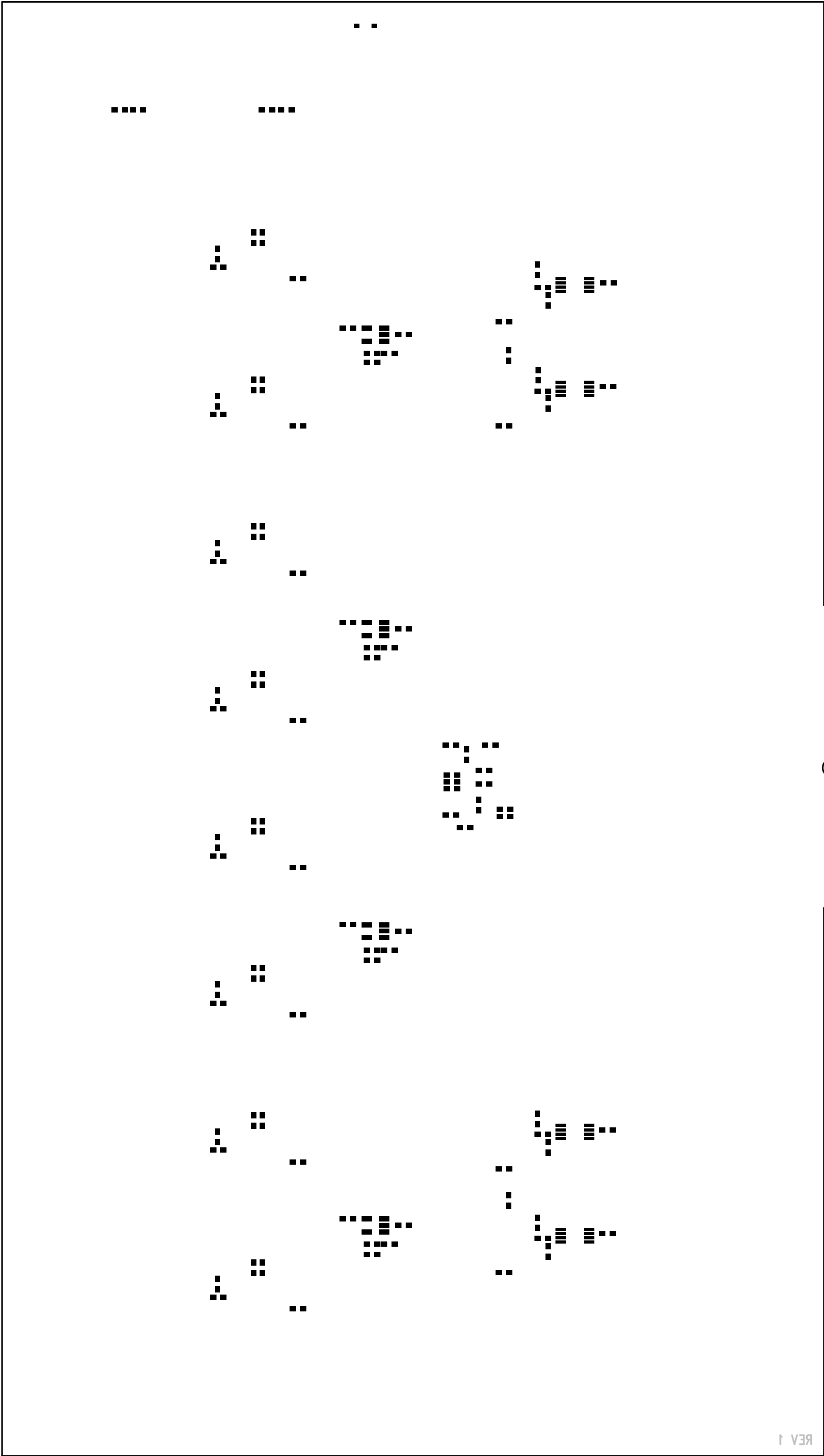
DATE: 06-01-16
TRUE DIFFERENTIAL INPUT OCTAL ADC



BOTTOM MASK LAYER
LINEAR TECHNOLOGY
DC2395A * LTC2325 FAMILY

DATE: 06-01-16
TRUE DIFFERENTIAL INPUT OCTAL ADC

REV 1



REV 1

BOTTOM PASTE LAYER
LINEAR TECHNOLOGY
DC2395A * LTC2325 FAMILY

DATE: 06-01-16
TRUE DIFFERENTIAL INPUT OCTAL ADC