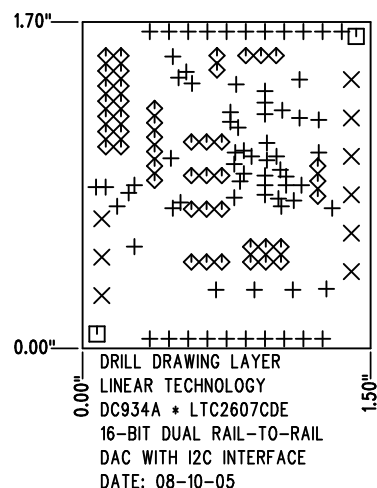


REVISIONS			
REV	DESCRIPTION	APPR	DATE
A	PROTOTYPE RELEASE	MT	06-07-05

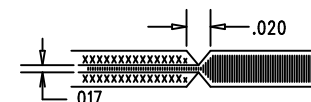


SHOWN FROM COMPONENT SIDE


SIZE	QTY	SYM	PLTD	TOL
0.015	71	+	YES	+/-0.003"
0.064	9	×	YES	+/-0.003"
0.07	2	□	NO	+/-0.003"
0.035	46	◇	YES	+/-0.003"

NOTES: UNLESS OTHERWISE SPECIFIED

1. FAB PER IPC-A-600
2. MATERIAL: EPOXY FIBERGLASS, NEMA GRADE FR-4
FINISHED THICKNESS TO BE 0.062" +/- .005"
TOTAL OF 4 LAYERS WITH 2 OZ. CU ON THE
OUTER LAYERS AND 1 OZ. CU ON THE INNER LAYERS.
FLAMABILITY RATING: 94 V-0 MINIMUM .
3. SIZE: CUT TO DIMENSIONS AND TOLERANCES SHOWN.
0.00" ARE PRIMARY DATUMS.
4. DRILLING: DRILL HOLES PER SCHEDULE. PLATE THROUGH
HOLES WITH COPPER, 0.001" THICK MIN.
ALL HOLE SIZES ARE SPECIFIED AFTER PLATING.
HOLE LOCATION TOLERANCES ARE +/-0.003"
IN RELATION TO CENTER
5. FINISH: SMOBC USING LPI BOTH SIDES, COLOR GREEN.
WHITE TIN IMMERSION (OMIKRON).
FOR SILKSCREEN: USE WHITE NON-CONDUCTIVE INK.
6. DO NOT ALTER ARTWORK e.g. TO ADD LOGO OR DATE CODE.
7. SCORING FOR PANELIZED PCB:



8. PLEASE LOOK AT THE README FILE FOR THE OTHER REQUIREMENTS.

APPROVALS			 1630 MCCARTHY BLVD MILPITAS, CA 95035 PH: (408)432-1900 LTC CONFIDENTIAL- FOR CUSTOMER USE ONLY	
DRAWN	INIT	DATE		
CHECK			TITLE: FABRICATION DRAWING 16-BIT DUAL RAIL-TO-RAIL DAC WITH I2C INTERFACE	
DESIGN	KIM T.	08-10-05		
ENGR	MARK T.	08-10-05	SIZE A DEMO DC934A-LTC2607CDE	
			REV. A	
SCALE = NONE			DES- 0000 SHT 1 of 1	