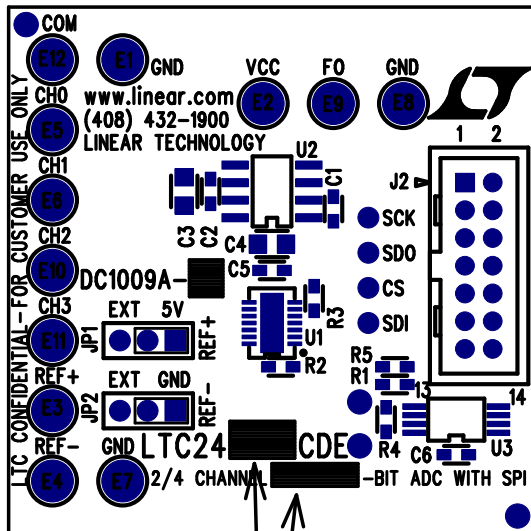


REVISIONS			
REV	DESCRIPTION	APPR	DATE
A-1	FINAL FABRICATION	MT	01-05-07



NOTES: UNLESS OTHERWISE SPECIFIED

1. WORKMANSHIP SHALL BE IN ACCORDANCE WITH IPC-A-610.
2. INSTALL SHUNTS ON JP1-JP2 PINS 1 AND 2.
3. PARTS TO OMIT WILL BE SPECIFIED ON THE BILL OF MATERIALS. LOCATIONS OF OMITTED PARTS SHALL BE FREE OF SOLDER. MASK THE SOLDER STENCIL WHERE SMT PARTS ARE OMITTED.
4. DEPANELIZE BOARDS AFTER ASSEMBLY AND ROUTE-OUT THE BREAKOUT TABS ON FOUR SIDES OF THE BOARD EDGE.
5. ASSY PROCESSES SHALL INCLUDE: REFLOW SOLDER TOP SIDE SMD.
6. MARKED LTC DEMO CIRCUIT ASSY DASH LETTER AND THE IC PART NUMBER (SEE TABLE) WITH BLACK PERMANENT MARKER, APPROX. WHERE SHOWN. (SEE BELOW EXAMPLE).

EXAMPLE: MARKED

6

VERSIONS	U1	BITS
-A	LTC2492CDE	24
-B	LTC2488CDE	16
-C	LTC2486CDE	16/PGA

APPROVALS

	INIT	DATE
DRAWN		
CHECK		
DESIGN	KIM T.	01-05-07
ENGR	MARK T.	01-05-07

SCALE = NONE



**LINEAR
TECHNOLOGY**

1630 MCCATHY BLVD
MILPITAS, CA 95035
PH: (408)432-1900
LTC CONFIDENTIAL -
FOR CUSTOMER USE ONLY

TITLE: TOP ASSEMBLY DRAWING

2/4 CHANNEL 24,16,16/PGA-BIT ADC WITH SPI

SIZE A	DEMO DC1009A-1 * LTC2400 FAMILY	REV. A-1
-----------	------------------------------------	-------------

SHT 1 of 1