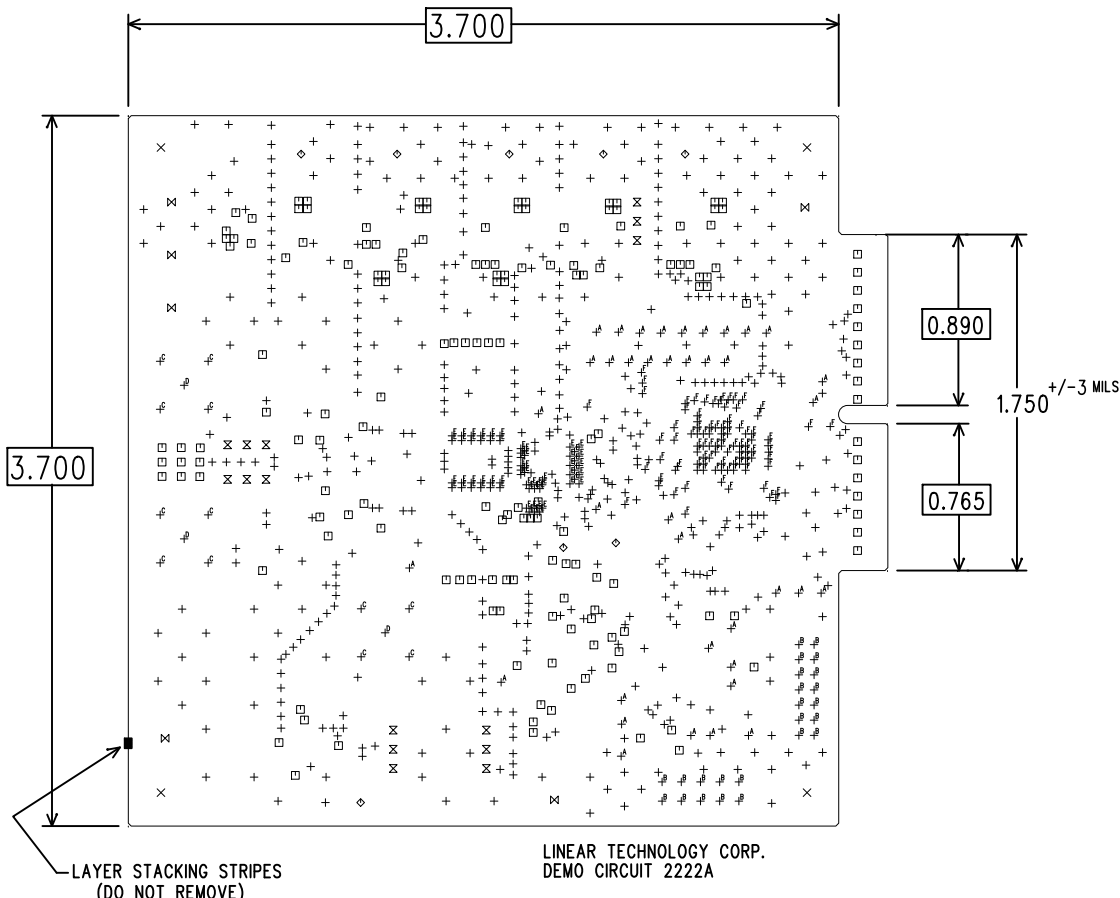


REVISION HISTORY				
ECO	REV	DESCRIPTION	APP. ENG.	DATE



NOTES: UNLESS OTHERWISE SPECIFIED

- FAB PER IPC-A-600.
- MATERIAL: -LEAD FREE ASSEMBLY COMPLIANT, FR-370HR OR EQUIVALENT.
-FINISHED THICKNESS TO BE 0.062" \pm 0.005"
-TOTAL OF 4 LAYERS WITH FINISHED COPPER THICKNESS 2.0 OZ. OUTER LAYERS, 1.0 OZ. INNER LAYERS.
STACKUP AS PER FIG.1, "LAYER STRUCTURE".
-FLAMMABILITY RATING: 94 V-0 MINIMUM.
- SIZE: CUT TO DIMENSIONS AND TOLERANCES SHOWN.
- DRILLING: -DRILL HOLES PER SCHEDULE. PLATE THROUGH HOLES WITH COPPER, 0.001" THICK MIN.
-ALL HOLE SIZES ARE SPECIFIED AFTER PLATING.
-HOLE LOCATION TOLERANCES SHALL BE 6 MILS DIAMETER TRUE POSITION.
- FINISH: -SMOBC USING LPI BOTH SIDES, COLOR GREEN.
-SILKSCREEN LEGENDS SHALL BE WHITE NON-CONDUCTIVE EPOXY INK.
-PLATING SHALL BE IMMERSION GOLD BOTH SIDES.
-EDGE CONNECTOR FINGERS SHALL HAVE HARD GOLD PLATE TO MINIMUM 30 MICROINCHES PER MIL-G-45204, TYPE II, CLASS 1, GRADE C, OVER 200 MICROINCHES LOW STRESS NICKEL PER QQ-N-290, CLASS 2.
-EDGE CONNECTOR SHALL HAVE MITERED CORNERS AND BEVELED EDGES AS PER FIGURE 2, "EDGE CONNECTOR DETAILS".
- ALL 13 MIL DIA VIAS SHALL BE IPC 4761 TYPE VII FILLED & CAPPED VIAS. FILLING SHALL BE NON-CONDUCTIVE.
- DO NOT ALTER ARTWORK e.g. TO ADD LOGO OR DATE CODE. PAD SIZE CAN BE MODIFIED TO MEET END FINISH.
- PCBS SHALL BE RoHS COMPLIANT.
- PCB'S SHALL BE PANELIZED USING ROUTE AND RETAIN METHOD. THERE SHALL BE TWO RETAINING TABS ON ALL BOARD EDGES GREATER THAN 2.5 INCHES LONG.
- ELECTRICAL TEST STAMPS SHALL BE ON BOTTOM SIDE ONLY.

SIZE	QTY	SYM	PLATED	TOL
10	525	+	YES	\pm 3 MILS
188	4	X	NO	\pm 3 MILS
12	165	□	YES	\pm 3 MILS
65	8	◇	YES	\pm 3 MILS
40	15	⊗	YES	\pm 3 MILS
95	6	⊠	YES	\pm 3 MILS
30	38	+ ^A	YES	+0.003/-0.000
35	24	+ ^B	YES	\pm 3 MILS
60	12	+ ^C	YES	\pm 3 MILS
51	3	+ ^D	YES	\pm 3 MILS
13	63	+ ^E	YES	\pm 0.003
6	95	+ ^F	YES	\pm 3 MILS

DRILL DRAWING

FIG. 1
LAYER STRUCTURE

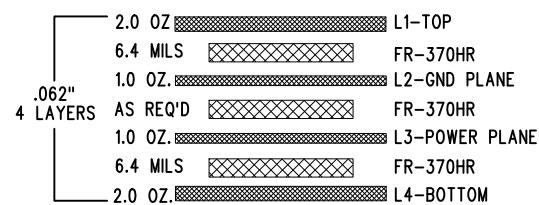
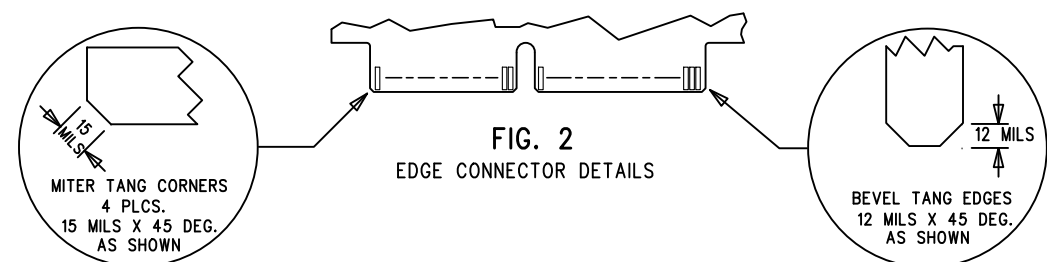


FIG. 2
EDGE CONNECTOR DETAILS



UNLESS OTHERWISE SPECIFIED
DIMENSIONS ARE IN INCHES
TOLERANCES:
0.XX" = \pm 0.01"
0.XXX" = \pm 0.005"
INTERPRET DIM AND TOL
PER ASME Y14.5M-1994
THIRD ANGLE PROJECTION

APPROVALS	
PCB DES.	M. HAWKINS
APP ENG.	G. HOOVER

1630 MCCARTHY BLVD
MILPITAS, CA 95035
PH: (408)432-1900
www.linear.com
LTC CONFIDENTIAL-
FOR CUSTOMER USE ONLY

TITLE: FABRICATION DRAWING	
OVERSAMPLED 32-BIT ADC WITH PROGRAMMABLE DIGITAL FILTER	
SIZE N/A	DEMO CIRCUIT 2222A
SCALE = NONE	
DWG REV. 3	

SHT 1 OF 1