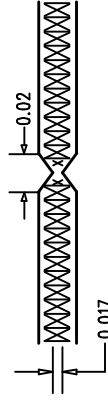
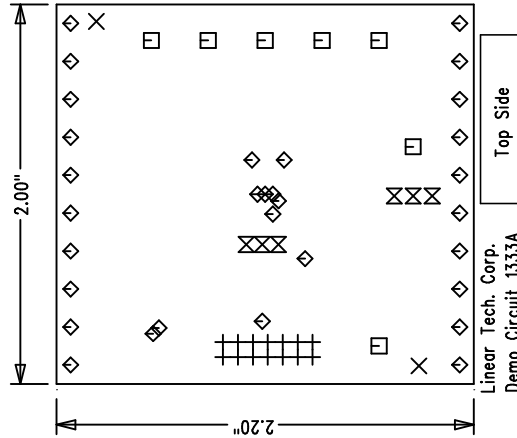



1. FAB PER IPC-A-600.
2. MATERIAL: EPOXY FIBERGLASS, NEMA GRADE FR-4.
2 OZ. COPPER FINISH ON OUTER LAYERS.
1 OZ. COPPER FINISH ON INNER LAYERS.
THICKNESS .062 +/--.006 TOTAL OF 4 LAYERS.
FLAMMABILITY RATING: 94 V-0 MINIMUM .
3. SIZE: DIMENSIONS SHOWN AND TOLERANCES TOL: +/--.010
0.000 ARE PRIMARY DATUMS.
4. DRILLING: DRILL HOLES PER SCHEDULE. PLATE THROUGH
HOLES WITH COPPER, .001 INCH THICK MIN. ALL
HOLE SIZES ARE SPECIFIED AFTER PLATING.
HOLE LOCATION TOLERANCES ARE +/--.003
INCH IN RELATION TO CENTER
5. FINISH: SMOBC USING LPI BOTH SIDES COLOR GREEN.
IMMERSION GOLD PLATING
6. SILKSCREEN : BOTH SIDES USING WHITE NON-CONDUCTIVE EPOXY INK.
7. DO NOT ALTER ARTWORK TO ADD LOGO OR DATE CODE.
BUT YOU MAY MODIFY PAD SIZE TO MEET END FINISH.
8. PCBs ARE TO BE RoHS COMPLIANT.
9. SCORING



Fabrication Drawing

SIZE	QTY	SYM	PLATED	TOL
0.07	2	✕	NO	+/-0.003
0.095	7	□	YES	+/-0.003
0.01	31	◇	YES	+/-0.003
0.035	6	⋈	YES	+/-0.003
0.03543	14	+	YES	+/-0.003

UNLESS OTHERWISE SPECIFIED
DIMENSIONS ARE IN INCHES
TOLERANCES ON ANGLE ± 1
2 PLACE $\pm .01$ 3 PLACE $\pm .005$
INTERPRET DIM AND TOL
PER ASME Y14.5M - 1994

<div>APPROVALS</div>				<div>1630 McCarthy Blvd. Milpitas, CA 95035 PH: (408)432-1900</div>					
	DRAWN	INIT	DATE						
	CHECK								
	DESIGN	Helen	9/13/07						
	ENGR	Leo Chen	9/13/07						
				TITLE: L TC2640-LM12/LZ12/HM12/HZ12					
				Single 12/10/8-Bit SPI Vout DAC					
SIZE		A		DEMO		DC1333A--A/B/C/D		REV. A	
SCALE = NONE				DES-250		SHEET 1 of 1			