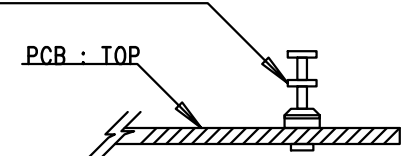


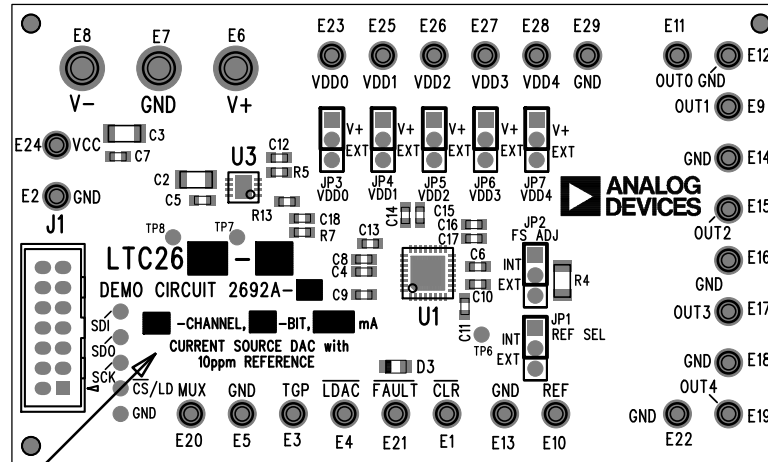
REVISION HISTORY				
ECO	REV	DESCRIPTION	APP. ENG.	DATE

## NOTES: UNLESS OTHERWISE SPECIFIED

1. WORKMANSHIP SHALL BE IN ACCORDANCE WITH IPC-A-610.
2. ASSEMBLY PROCESS SHALL INCLUDE REFLOW SOLDER TOP AND BOTTOM SIDES. MAXIMUM TEMPERATURE SHALL NOT EXCEED 240 DEGREES CELSIUS.
3. DEPANELIZE BOARDS AFTER ASSEMBLY AND ROUTE-OUT THE BREAKOUT TABS ON FOUR SIDES OF THE BOARD EDGE.
4. UNSTUFFED LAND PATTERNS SHALL BE FREE OF SOLDER. MASK THE SOLDER STENCIL AT THESE LOCATIONS.
5. APPLY DEMO S/N AT AREA ON BOTTOM SIDE AS SHOWN ON SHEET 2.
6. INSTALL TURRETS AS SHOWN:  
TURRETS : TYPICAL, MILL-MAX 2308-2, 2501-2




7. INSTALL SHUNTS FOR JP1-JP7 AS DEPICTED.
8. USE BLACK PERMANENT MARKER TO WRITE IC#, SKU#, CHANNEL#, BIT# AND CURRENT RATING IN THE WHITE SILKSCREEN SPACES PROVIDED, ACCORDING TO THE ASSEMBLY MARKING TABLE.



NOTE 8

## ASSEMBLY MARKING TABLE

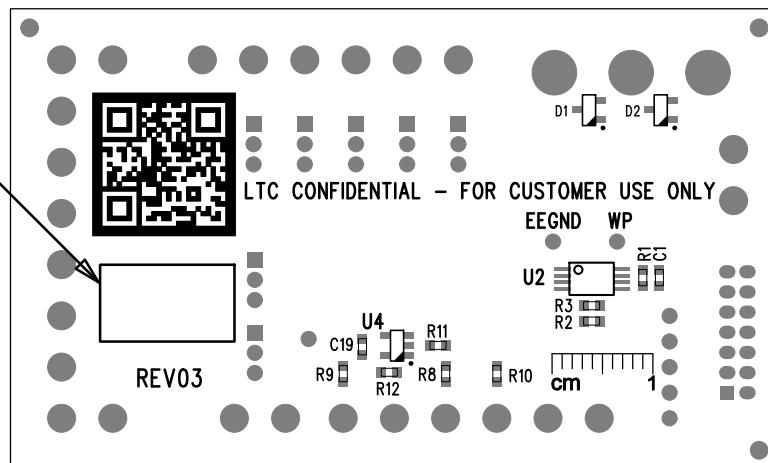
IC#	SKU#	CHANNEL#	BIT#	CURRENT
LTC2662-16	DC2692A-A	5-CHANNEL	16-BIT	300 mA
LTC2662-12	DC2692A-B	5-CHANNEL	12-BIT	300 mA
LTC2648-16	DC2692A-C	4-CHANNEL	16-BIT	24 mA
LTC2648-12	DC2692A-D	4-CHANNEL	12-BIT	24 mA


APPROVALS			
ENGR.	M.HAWKINS		
APP ENG.	NOE QUINTERO	TITLE: TOP ASSEMBLY DRAWING 5-CHANNEL,16/12-BIT, 300/24 mA CURRENT SOURCE DACS WITH 10ppM REFERENCE	
		SIZE N/A	DEMO CIRCUIT DC2692A DWG. REV. 03
		SCALE = NONE	
		SHT 1 OF 2	

1630 MCCARTHY BLVD  
MILPITAS, CA 95035  
PH: (408)432-1900  
www.linear.com  
LTC CONFIDENTIAL-  
FOR CUSTOMER USE ONLY

DEMO S/N LABEL  
APPLY IN THIS AREA

1



APPROVALS		 <b>LINEAR TECHNOLOGY</b> 1630 MCCARTHY BLVD MILPITAS, CA 95035 PH: (408)432-1900 www.linear.com LTC CONFIDENTIAL- FOR CUSTOMER USE ONLY	
ENGR.	M.HAWKINS		
APP ENG.	NOE QUINTERO	TITLE: BOTTOM ASSEMBLY DRAWING	
		5-CHANNEL,16/12-BIT, 300/24 mA CURRENT SOURCE	
		DACS WITH 10ppm REFERENCE	
		SIZE N/A	DWG REV. 03
SCALE = NONE		SHT 2 of 2	