

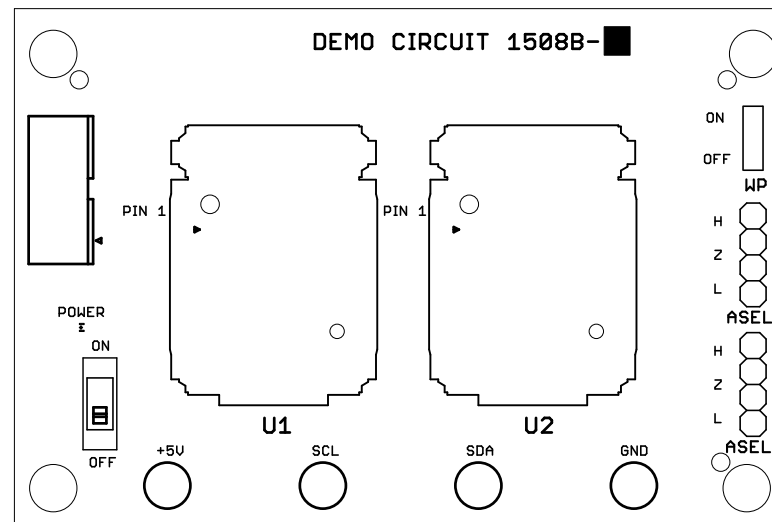
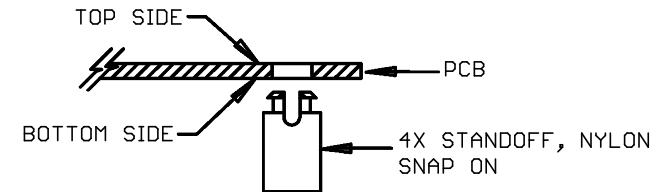
# REVISION HISTORY

ECO	REV	DESCRIPTION	APPROVED	DATE
-	1	PRODUCTION	MIKE P.	03/28/2014

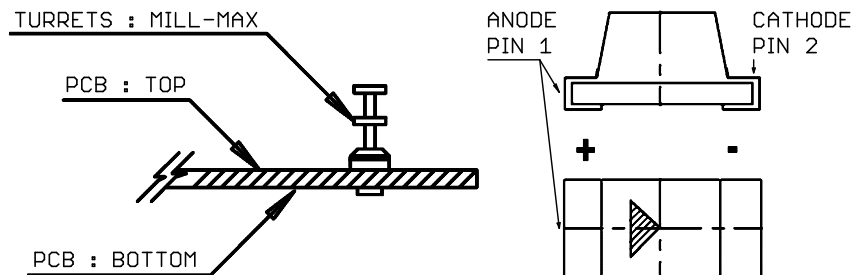
## NOTES: UNLESS OTHERWISE SPECIFIED


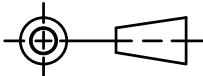
1. WORKMANSHIP SHALL BE IN ACCORDANCE WITH IPC-A-610.
2. PARTS TO OMIT WILL BE SPECIFIED ON THE BILL OF MATERIALS.  
MASK THE SOLDER STENCIL WHERE SMT PARTS ARE OMITTED.
3. DEPANELIZE BOARDS AFTER ASSEMBLY AND ROUTE-OUT THE BREAKOUT TABS ON 4 SIDES OF THE BOARD EDGE.
4. ASSY PROCESS SHALL INCLUDE: REFLOW SOLDER TOP SIDE SMD.
5. DO NOT APPLY ANY KIND OF ASSEMBLY STAMP OR QA STAMP ON ANY BOARD.

6. INSTALL 4 STANDOFFS AT 4 CORNERS FROM THE BOTTOM SIDE.



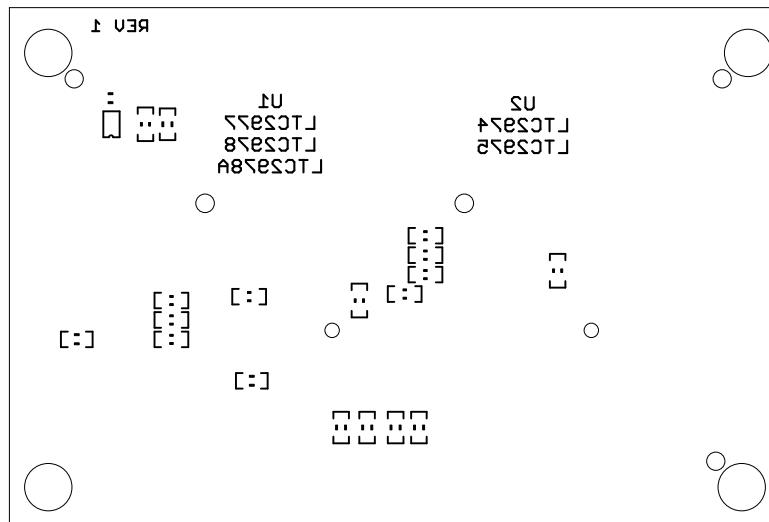
7. INSTALL TURRETS and LEDS AS SHOWN BELOW:

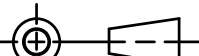



UNLESS OTHERWISE SPECIFIED DIMENSIONS ARE IN INCHES TOLERANCES ON ANGLE +/- 1° 0.XX" = +/- 0.01" 0.XXX" = +/- 0.005" INTERPRET DIM AND TOL PER ASME Y14.5M-1994	APPROVALS			 <div>1630 MCCARTHY BLVD. MILPITAS, CA 95033 PH: (408) 432-1900 LTC CONFIDENTIAL FOR CUSTOMER USE ONLY</div>		
		NAME	DATE			
	PCB DES.	RENE S.	03-28-14			
	ENG	MIKE P.	03-28-14			
THIRD ANGLE PROJECTION				TITLE: TOP ASSEMBLY DRAWING DC1508B PROGRAMMING BOARD FOR POWER SYSTEM MANAGERS		
						
DO NOT SCALE DRAWING	SCALE: NONE			SIZE N/A	IC NO. LTC2974, 2975, 2977, LTC2978, 2978A	REV 1
FILENAME: DC1508B-1				SHEET 1 OF 13		

# REVISION HISTORY

ECO	REV	DESCRIPTION	APPROVED	DATE
-	1	PRODUCTION	MIKE P.	03/28/2014

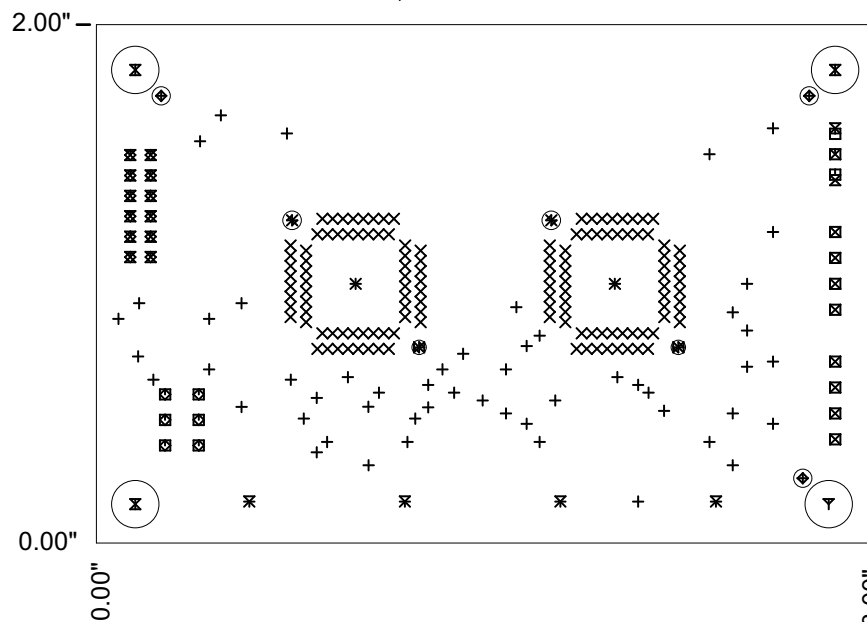
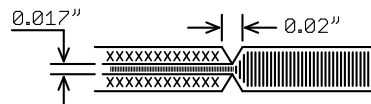


UNLESS OTHERWISE SPECIFIED DIMENSIONS ARE IN INCHES TOLERANCES ON ANGLE +/- 1° 0.XX" = +/- 0.01" 0.XXX" = +/- 0.005" INTERPRET DIM AND TOL PER ASME Y14.5M-1994  THIRD ANGLE PROJECTION    DO NOT SCALE DRAWING	APPROVALS		 <div>1630 MCCARTHY BLVD. MILPITAS, CA 95033 PH: (408) 432-1900 LTC CONFIDENTIAL FOR CUSTOMER USE ONLY</div>	
		NAME		DATE
	PCB DES.	RENE S.		03-28-14
	ENG	MIKE P.		03-28-14
TITLE: BOTTOM ASSEMBLY DRAWING DC1508B PROGRAMMING BOARD FOR POWER SYSTEM MANAGERS				
SIZE N/A	IC NO. LTC2974, 2975, 2977, LTC2978, 2978A	REV 1		
FILENAME: DC1508B-1		SHEET 2 OF 13		

## NOTES: UNLESS OTHERWISE SPECIFIED

1. FAB PER IPC-A-600.
2. MATERIAL: EPOXY FIBERGLASS, NEMA GRADE FR-4  
FINISHED THICKNESS TO BE 0.062" +/-0.005"  
4-LAYER BOARD, 2 OZ. CU ON OUTER LAYERS,  
1 OZ. CU ON INNER LAYERS,  
FLAMMABILITY RATING: 94 V-2 MINIMUM.
3. SIZE: CUT TO DIMENSIONS AND TOLERANCES SHOWN.  
0.00" ARE PRIMARY DATUMS.
4. FINISH: SMOBC USING LPI BOTH SIDES, COLOR BLACK.  
ENIG FINISH. LEAD FREE SOLDER CAN BE USED  
FOR PROTOTYPE BOARDS.  
HIGH DEFINITION WHITE SILKSCREEN.

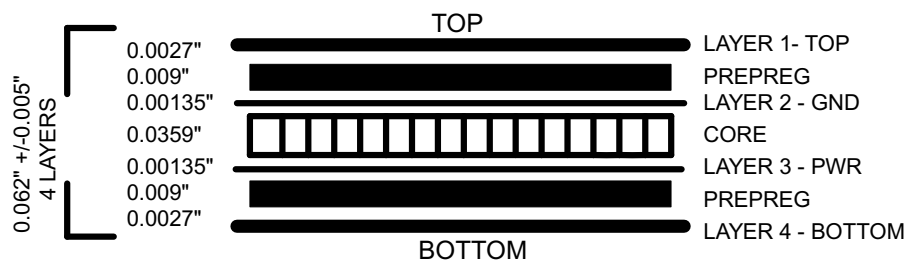
5. DRILL: PLATE THRU ALL HOLES WITH COPPER, 0.001"  
THICK MIN. ALL HOLES SHALL BE DRILLED  
+/-0.003" WITH RESPECT TO CTR. OF DRILLED  
PAD. ALL HOLES FINISHED SIZE AFTER PLATING.
6. DROP ALL UNUSED PADS ON INNER LAYERS.
7. DO NOT ALTER ARTWORK e.g. TO ADD LOGO OR DATE CODE.  
PAD SIZE CAN BE MODIFIED TO MEET END FINISH.
8. PCBs ARE TO BE RoHS COMPLIANT.
9. SCORING FOR PANELIZED PCB:


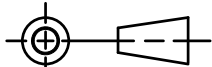


## DRILL TABLE

Sym	Nº	Mils	MM	Qty	Plated
+	1	15	0.38	53	YES
x	2	17	0.43	128	YES
□	3	31	0.80	3	YES
◇	4	35	0.90	6	YES
×	5	36	0.91	12	YES
⊠	6	40	1.02	8	YES
⊕	7	55	1.40	2	NOT
⊗	8	71	1.80	3	NOT
*	9	71	1.80	2	NOT
×	10	90	2.29	2	YES
▽	11	96	2.44	4	YES
△	12	183	4.65	4	NOT

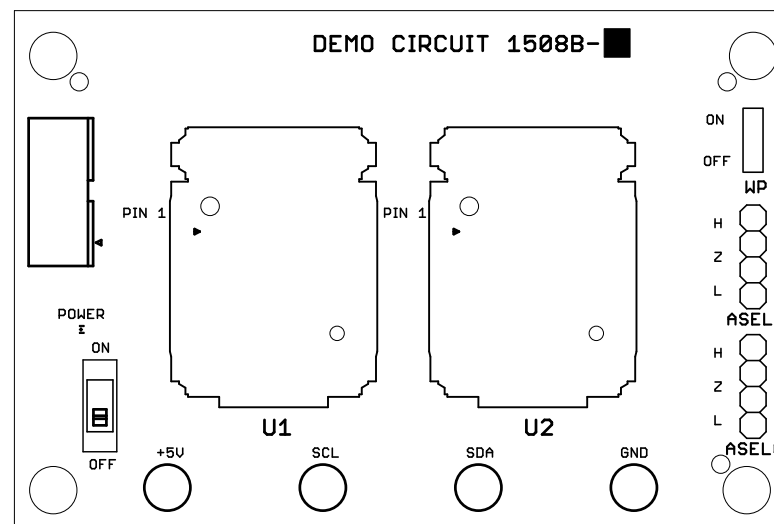
## LAYER STRUCTURE



UNLESS OTHERWISE SPECIFIED DIMENSIONS ARE IN INCHES TOLERANCES ON ANGLE +/- 1° 0.XX" = +/- 0.01" 0.XXX" = +/- 0.005" INTERPRET DIM AND TOL PER ASME Y14.5M-1994	APPROVALS			 <div>1630 MCCARTHY BLVD. MILPITAS, CA 95033 Ph: (408) 432-1900 LTC CONFIDENTIAL FOR CUSTOMER USE ONLY</div>	
		NAME	DATE		
	PCB DES.	RENE S.	03-28-14		
	ENG	MIKE P.	03-28-14		
	THIRD ANGLE PROJECTION				
				TITLE: FABRICATION DRAWING DC1508B PROGRAMMING BOARD FOR POWER SYSTEM MANAGERS	
DO NOT SCALE DRAWING	SCALE: NONE		SIZE N/A	IC NO. LTC2974, 2975, 2977, LTC2978, 2978A	REV 1
			FILENAME: DC1508B-1		SHEET 3 OF 13

# REVISION HISTORY

ECO	REV	DESCRIPTION	APPROVED	DATE
-	1	PRODUCTION	MIKE P.	03/28/2014



<p>UNLESS OTHERWISE SPECIFIED DIMENSIONS ARE IN INCHES TOLERANCES ON ANGLE <math>\pm 1^\circ</math> 0.XX" = <math>\pm 0.01</math>" 0.XXX" = <math>\pm 0.005</math>" INTERPRET DIM AND TOL PER ASME Y14.5M-1994</p>	APPROVALS			<p><b>LINEAR</b> TECHNOLOGY</p> <p>1630 MCCARTHY BLVD. MILPITAS, CA 95033 PH: (408) 432-1900 LTC CONFIDENTIAL FOR CUSTOMER USE ONLY</p>
	NAME	DATE		
	PCB DES.	RENE S.	03-28-14	
	ENG	MIKE P.	03-28-14	
THIRD ANGLE PROJECTION				<p>TITLE: TOP SILKSCREEN DC1508B PROGRAMMING BOARD FOR POWER SYSTEM MANAGERS</p>
DO NOT SCALE DRAWING	SCALE: NONE	FILENAME: DC1508B-1	SHEET 4 OF 13	

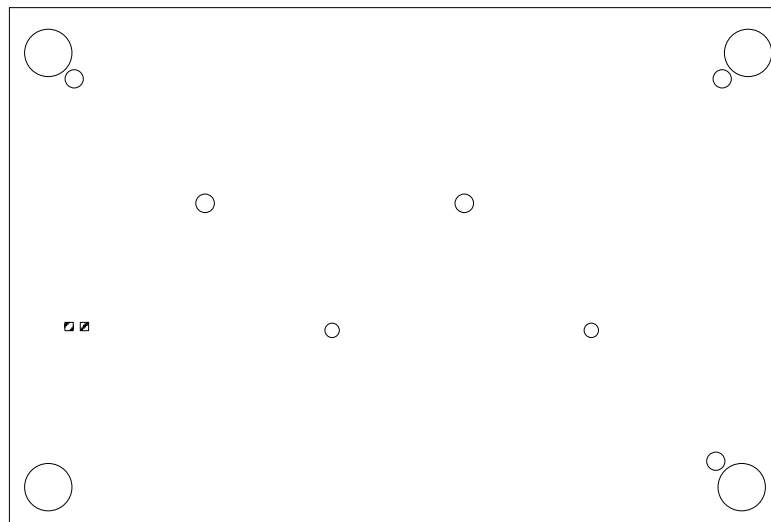
SIZE N/A

IC NO. LTC2974, 2975, 2977, LTC2978, 2978A

REV 1

# REVISION HISTORY

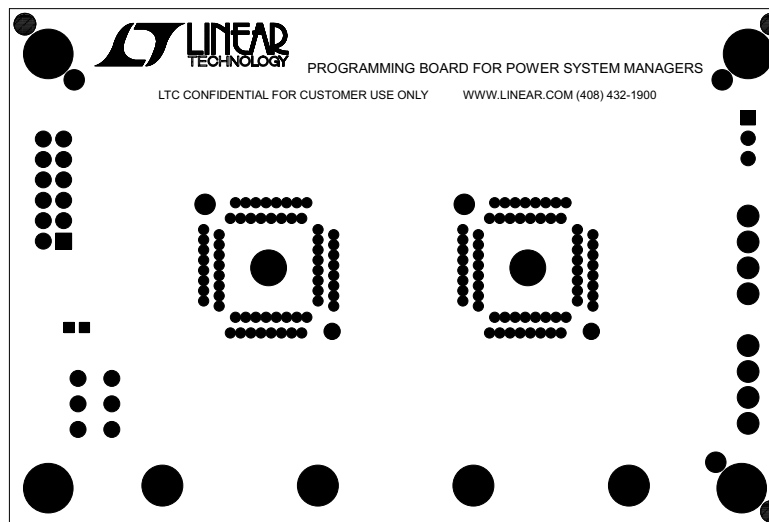
ECO	REV	DESCRIPTION	APPROVED	DATE
-	1	PRODUCTION	MIKE P.	03/28/2014


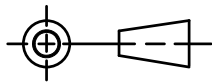


<p>UNLESS OTHERWISE SPECIFIED DIMENSIONS ARE IN INCHES TOLERANCES ON ANGLE +/- 1° 0.XX" = +/- 0.01" 0.XXX" = +/- 0.005" INTERPRET DIM AND TOL PER ASME Y14.5M-1994</p> <p>THIRD ANGLE PROJECTION</p> <p>DO NOT SCALE DRAWING</p>	<p><b>APPROVALS</b></p> <table border="1"> <thead> <tr> <th></th> <th>NAME</th> <th>DATE</th> </tr> </thead> <tbody> <tr> <td>PCB DES.</td> <td>RENE S.</td> <td>03-28-14</td> </tr> <tr> <td>ENG</td> <td>MIKE P.</td> <td>03-28-14</td> </tr> <tr> <td></td> <td></td> <td></td> </tr> <tr> <td></td> <td></td> <td></td> </tr> </tbody> </table>				NAME	DATE	PCB DES.	RENE S.	03-28-14	ENG	MIKE P.	03-28-14							<p><b>LINEAR TECHNOLOGY</b></p> <p>1630 MCCARTHY BLVD. MILPITAS, CA 95033 PH: (408) 432-1900 LTC CONFIDENTIAL FOR CUSTOMER USE ONLY</p>		
		NAME	DATE																		
	PCB DES.	RENE S.	03-28-14																		
	ENG	MIKE P.	03-28-14																		
<p><b>TITLE: TOP PASTE</b> <b>DC1508B PROGRAMMING BOARD</b> <b>FOR POWER SYSTEM MANAGERS</b></p>																					
<p>SIZE N/A</p>		<p>IC NO. LTC2974, 2975, 2977, LTC2978, 2978A</p>		<p>REV <b>1</b></p>																	
<p>FILENAME: DC1508B-1</p>				<p>SHEET 5 OF 13</p>																	
<p>SCALE: NONE</p>																					

# REVISION HISTORY

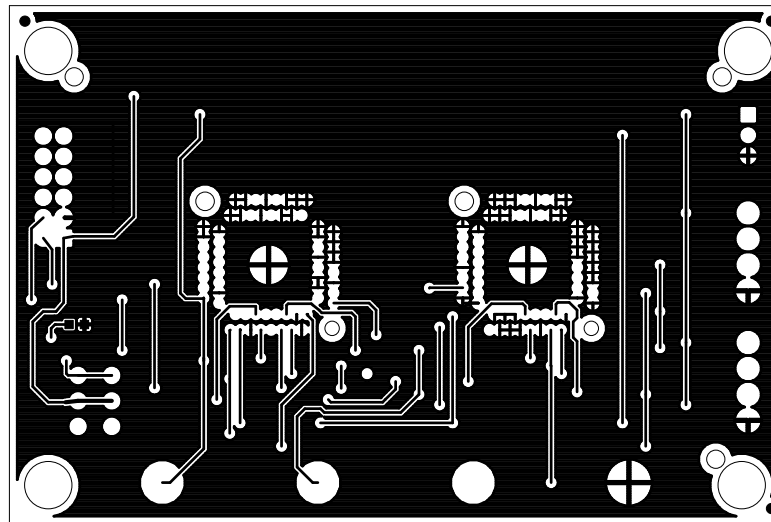
ECO	REV	DESCRIPTION	APPROVED	DATE
-	1	PRODUCTION	MIKE P.	03/28/2014



<p>UNLESS OTHERWISE SPECIFIED DIMENSIONS ARE IN INCHES TOLERANCES ON ANGLE +/- 1° 0.XX" = +/- 0.01" 0.XXX" = +/- 0.005" INTERPRET DIM AND TOL PER ASME Y14.5M-1994</p>	APPROVALS			 <p>1630 MCCARTHY BLVD. MILPITAS, CA 95033 PH: (408) 432-1900 LTC CONFIDENTIAL FOR CUSTOMER USE ONLY</p>
		NAME	DATE	
	PCB DES.	RENE S.	03-28-14	
	ENG	MIKE P.	03-28-14	
THIRD ANGLE PROJECTION				<p>TITLE: TOP SOLDERMASK DC1508B PROGRAMMING BOARD FOR POWER SYSTEM MANAGERS</p>
				
DO NOT SCALE DRAWING	SCALE: NONE	SIZE	IC NO.	REV
		N/A	LTC2974, 2975, 2977, LTC2978, 2978A	1
FILENAME: DC1508B-1			SHEET 6 OF 13	

# REVISION HISTORY

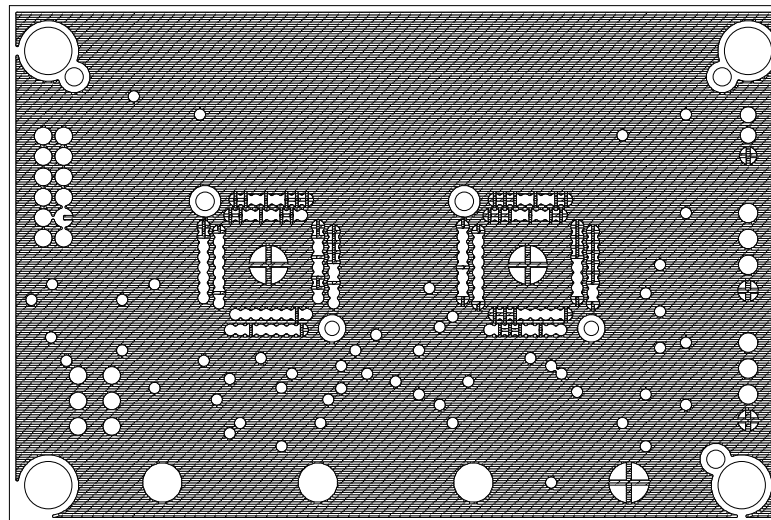
ECO	REV	DESCRIPTION	APPROVED	DATE
-	1	PRODUCTION	MIKE P.	03/28/2014



<p>UNLESS OTHERWISE SPECIFIED DIMENSIONS ARE IN INCHES TOLERANCES ON ANGLE +/- 1° 0.XX" = +/- 0.01" 0.XXX" = +/- 0.005" INTERPRET DIM AND TOL PER ASME Y14.5M-1994</p>	<p><b>APPROVALS</b></p>			<p><b>LINEAR TECHNOLOGY</b></p> <p>1630 MCCARTHY BLVD. MILPITAS, CA 95033 PH: (408) 432-1900 LTC CONFIDENTIAL FOR CUSTOMER USE ONLY</p>
		NAME	DATE	
	PCB DES.	RENE S.	03-28-14	
	ENG	MIKE P.	03-28-14	
THIRD ANGLE PROJECTION				<p><b>TITLE: 1 - TOP COPPER (SIGNAL)</b> <b>DC1508B PROGRAMMING BOARD</b> <b>FOR POWER SYSTEM MANAGERS</b></p>
				<p>SIZE N/A</p>
DO NOT SCALE DRAWING	SCALE: NONE	<p>IC NO. LTC2974, 2975, 2977, LTC2978, 2978A</p>		<p>REV <b>1</b></p>
		FILENAME: DC1508B-1		SHEET 7 OF 13

# REVISION HISTORY

ECO	REV	DESCRIPTION	APPROVED	DATE
-	1	PRODUCTION	MIKE P.	03/28/2014

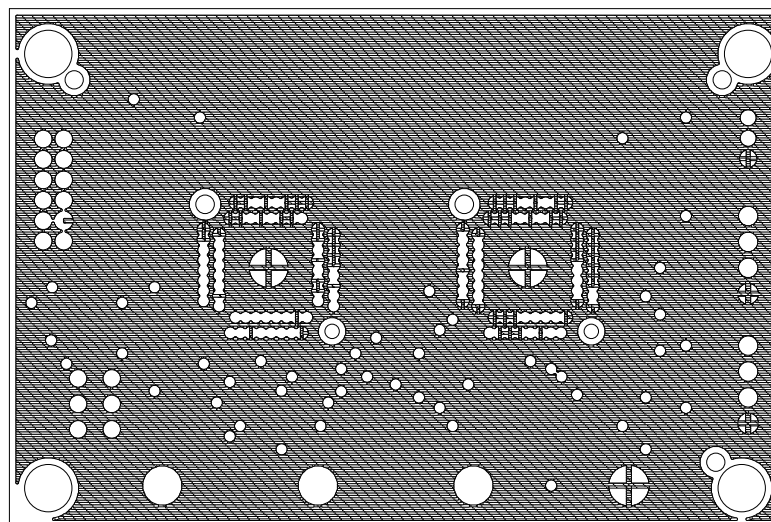



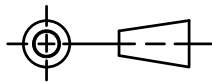
<p>UNLESS OTHERWISE SPECIFIED DIMENSIONS ARE IN INCHES TOLERANCES ON ANGLE +/- 1° 0.XX" = +/- 0.01" 0.XXX" = +/- 0.005" INTERPRET DIM AND TOL PER ASME Y14.5M-1994</p>	<p><b>APPROVALS</b></p>			<p><b>LINEAR TECHNOLOGY</b></p> <p>1630 MCCARTHY BLVD. MILPITAS, CA 95033 PH: (408) 432-1900 LTC CONFIDENTIAL FOR CUSTOMER USE ONLY</p>
		NAME	DATE	
	PCB DES.	RENE S.	03-28-14	
	ENG	MIKE P.	03-28-14	
THIRD ANGLE PROJECTION				<p><b>TITLE: 2 - INNER COPPER (GND PLANE)</b> <b>DC1508B PROGRAMMING BOARD</b> <b>FOR POWER SYSTEM MANAGERS</b></p>
				<p>SIZE N/A</p>
DO NOT SCALE DRAWING	SCALE: NONE	<p>IC NO. LTC2974, 2975, 2977, LTC2978, 2978A</p>		<p>REV <b>1</b></p>
		FILENAME: DC1508B-1		SHEET 8 OF 13



# REVISION HISTORY

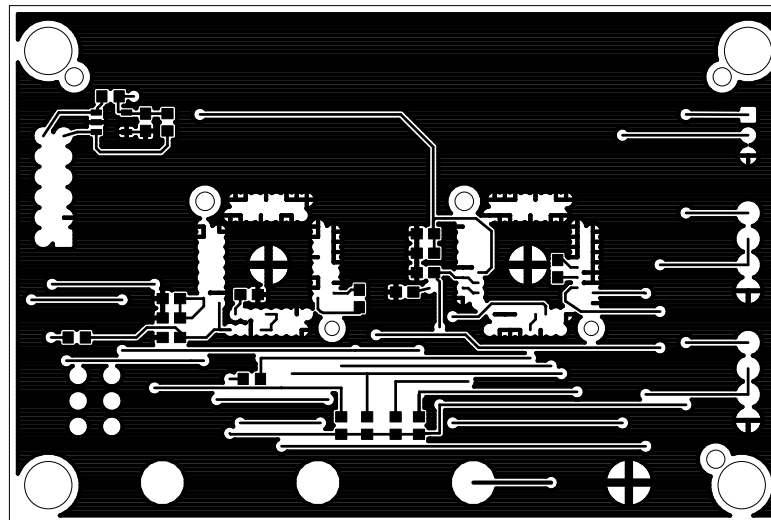
ECO	REV	DESCRIPTION	APPROVED	DATE
-	1	PRODUCTION	MIKE P.	03/28/2014



UNLESS OTHERWISE SPECIFIED DIMENSIONS ARE IN INCHES TOLERANCES ON ANGLE +/- 1° 0.XX" = +/- 0.01" 0.XXX" = +/- 0.005" INTERPRET DIM AND TOL PER ASME Y14.5M-1994	<b>APPROVALS</b>			 1630 MCCARTHY BLVD. MILPITAS, CA 95033 PH: (408) 432-1900 LTC CONFIDENTIAL FOR CUSTOMER USE ONLY			
		NAME	DATE				
	PCB DES.	RENE S.	03-28-14				
	ENG	MIKE P.	03-28-14				
THIRD ANGLE PROJECTION				<b>TITLE: 3 - INNER COPPER (GND PLANE)</b> <b>DC1508B PROGRAMMING BOARD</b> <b>FOR POWER SYSTEM MANAGERS</b>			
					SIZE N/A	IC NO. LTC2974, 2975, 2977, LTC2978, 2978A	REV <b>1</b>
	DO NOT SCALE DRAWING				SCALE: NONE		FILENAME: DC1508B-1
						SHEET 9 OF 13	

# REVISION HISTORY

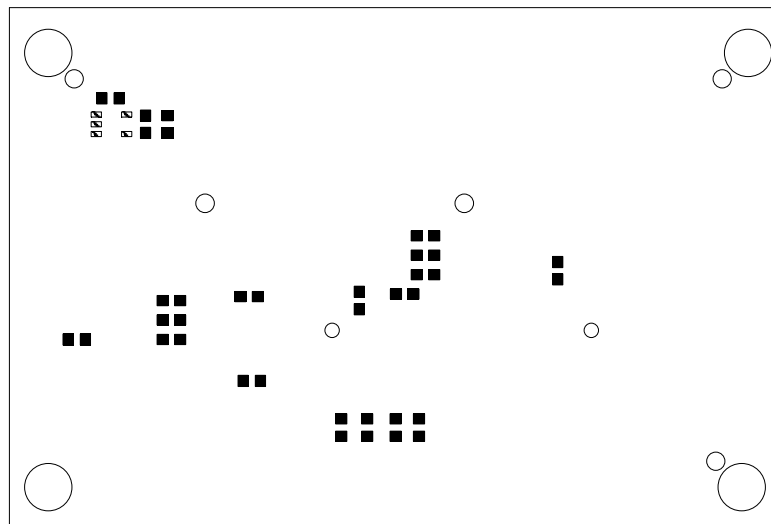
ECO	REV	DESCRIPTION	APPROVED	DATE
-	1	PRODUCTION	MIKE P.	03/28/2014


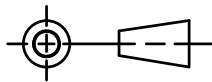


<p>UNLESS OTHERWISE SPECIFIED DIMENSIONS ARE IN INCHES TOLERANCES ON ANGLE +/- 1° 0.XX" = +/- 0.01" 0.XXX" = +/- 0.005" INTERPRET DIM AND TOL PER ASME Y14.5M-1994</p>	<p><b>APPROVALS</b></p>			<p><b>LINEAR TECHNOLOGY</b></p> <p>1630 MCCARTHY BLVD. MILPITAS, CA 95033 PH: (408) 432-1900 LTC CONFIDENTIAL FOR CUSTOMER USE ONLY</p>
		NAME	DATE	
	PCB DES.	RENE S.	03-28-14	
	ENG	MIKE P.	03-28-14	
THIRD ANGLE PROJECTION				<p><b>TITLE: 4 - BOTTOM COPPER (SIGNAL)</b> <b>DC1508B PROGRAMMING BOARD</b> <b>FOR POWER SYSTEM MANAGERS</b></p>
				<p>SIZE N/A</p>
DO NOT SCALE DRAWING	SCALE: NONE	<p>IC NO. LTC2974, 2975, 2977, LTC2978, 2978A</p>		<p>REV <b>1</b></p>
		<p>FILENAME: DC1508B-1</p>		<p>SHEET 10 OF 13</p>

# REVISION HISTORY

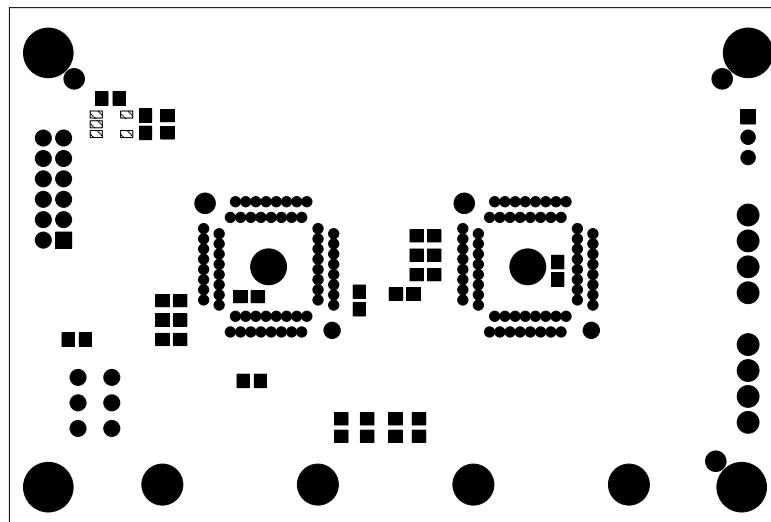
ECO	REV	DESCRIPTION	APPROVED	DATE
-	1	PRODUCTION	MIKE P.	03/28/2014



UNLESS OTHERWISE SPECIFIED DIMENSIONS ARE IN INCHES TOLERANCES ON ANGLE +/- 1° 0.XX" = +/- 0.01" 0.XXX" = +/- 0.005" INTERPRET DIM AND TOL PER ASME Y14.5M-1994	<b>APPROVALS</b>			 1630 MCCARTHY BLVD. MILPITAS, CA 95033 PH: (408) 432-1900 LTC CONFIDENTIAL FOR CUSTOMER USE ONLY			
		NAME	DATE				
	PCB DES.	RENE S.	03-28-14				
	ENG	MIKE P.	03-28-14				
THIRD ANGLE PROJECTION				<b>TITLE: BOTTOM PASTE</b> <b>DC1508B PROGRAMMING BOARD</b> <b>FOR POWER SYSTEM MANAGERS</b>			
					SIZE	IC NO.	REV
					N/A	LTC2974, 2975, 2977, LTC2978, 2978A	<b>1</b>
	DO NOT SCALE DRAWING				SCALE: NONE	FILENAME: DC1508B-1	

# REVISION HISTORY

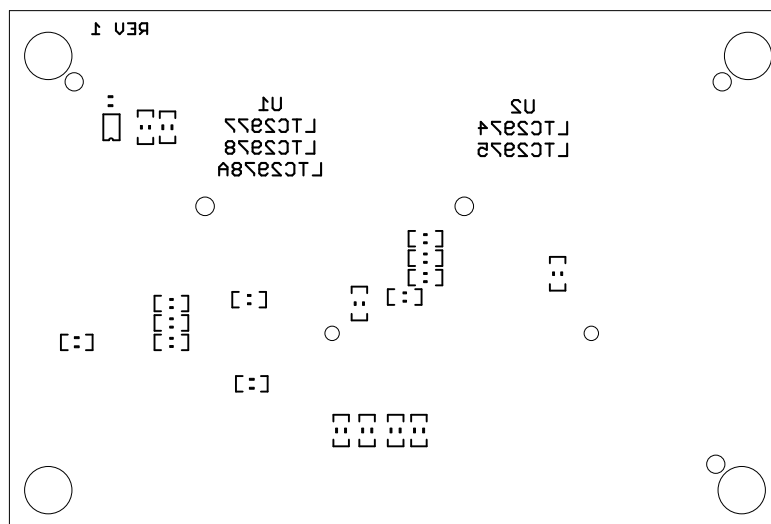
ECO	REV	DESCRIPTION	APPROVED	DATE
-	1	PRODUCTION	MIKE P.	03/28/2014


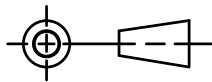


<p>UNLESS OTHERWISE SPECIFIED DIMENSIONS ARE IN INCHES TOLERANCES ON ANGLE +/- 1° 0.XX" = +/- 0.01" 0.XXX" = +/- 0.005" INTERPRET DIM AND TOL PER ASME Y14.5M-1994</p>	<p><b>APPROVALS</b></p>			<p><b>LINEAR TECHNOLOGY</b></p> <p>1630 MCCARTHY BLVD. MILPITAS, CA 95033 PH: (408) 432-1900 LTC CONFIDENTIAL FOR CUSTOMER USE ONLY</p>			
		NAME	DATE				
	PCB DES.	RENE S.	03-28-14				
	ENG	MIKE P.	03-28-14				
THIRD ANGLE PROJECTION				<p><b>TITLE: BOTTOM SOLDERMASK DC1508B PROGRAMMING BOARD FOR POWER SYSTEM MANAGERS</b></p>			
					<p>SIZE</p> <p>N/A</p>	<p>IC NO.</p> <p>LTC2974, 2975, 2977, LTC2978, 2978A</p>	<p>REV</p> <p><b>1</b></p>
	DO NOT SCALE DRAWING	SCALE: NONE			FILENAME: DC1508B-1		SHEET 12 OF 13

# REVISION HISTORY

ECO	REV	DESCRIPTION	APPROVED	DATE
-	1	PRODUCTION	MIKE P.	03/28/2014



UNLESS OTHERWISE SPECIFIED DIMENSIONS ARE IN INCHES TOLERANCES ON ANGLE +/- 1° 0.XX" = +/- 0.01" 0.XXX" = +/- 0.005" INTERPRET DIM AND TOL PER ASME Y14.5M-1994	<b>APPROVALS</b>			 1630 MCCARTHY BLVD. MILPITAS, CA 95033 PH: (408) 432-1900 LTC CONFIDENTIAL FOR CUSTOMER USE ONLY			
		NAME	DATE				
	PCB DES.	RENE S.	03-28-14				
	ENG	MIKE P.	03-28-14				
THIRD ANGLE PROJECTION				<b>TITLE: BOTTOM SILKSCREEN</b> <b>DC1508B PROGRAMMING BOARD</b> <b>FOR POWER SYSTEM MANAGERS</b>			
					SIZE N/A	IC NO. LTC2974, 2975, 2977, LTC2978, 2978A	REV <b>1</b>
	DO NOT SCALE DRAWING	SCALE: NONE	FILENAME: DC1508B-1		SHEET 13 OF 13		