

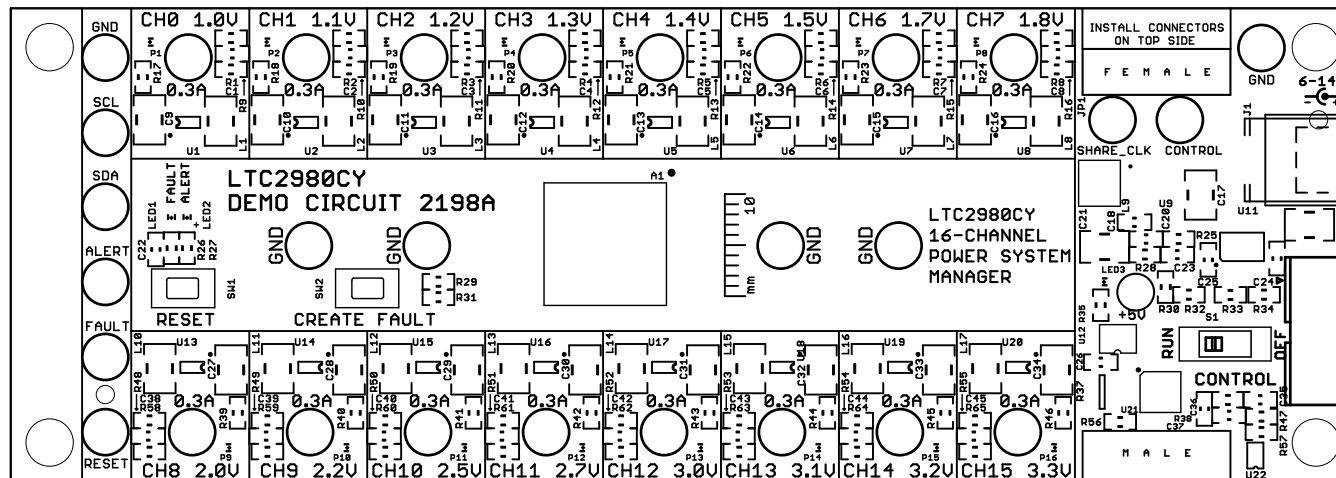
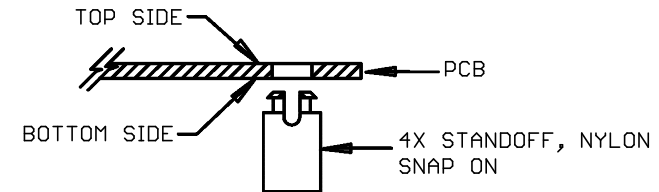
REVISION HISTORY

ECO	REV	DESCRIPTION	APPROVED	DATE
-	1	PRODUCTION	MIKE P.	01/17/2014

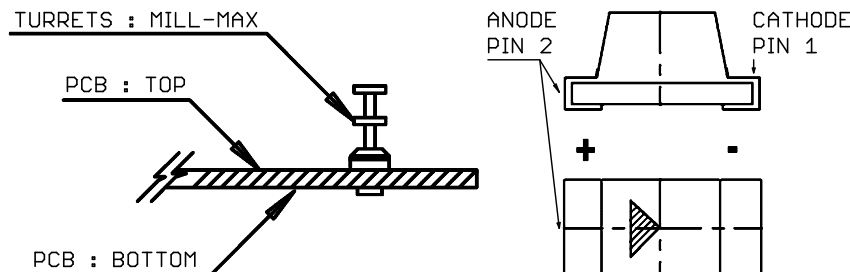
NOTES: UNLESS OTHERWISE SPECIFIED


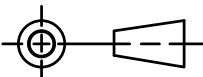
1. WORKMANSHIP SHALL BE IN ACCORDANCE WITH IPC-A-610.
2. PARTS TO OMIT WILL BE SPECIFIED ON THE BILL OF MATERIALS.
MASK THE SOLDER STENCIL WHERE SMT PARTS ARE OMITTED.
3. DEPANELIZE BOARDS AFTER ASSEMBLY AND ROUTE-OUT THE BREAKOUT TABS ON 4 SIDES OF THE BOARD EDGE.
4. ASSY PROCESS SHALL INCLUDE: REFLOW SOLDER TOP SIDE SMD.
5. DO NOT APPLY ANY KIND OF ASSEMBLY STAMP OR QA STAMP ON ANY BOARD.

6. INSTALL 4 STANDOFFS AT 4 CORNERS FROM THE BOTTOM SIDE.



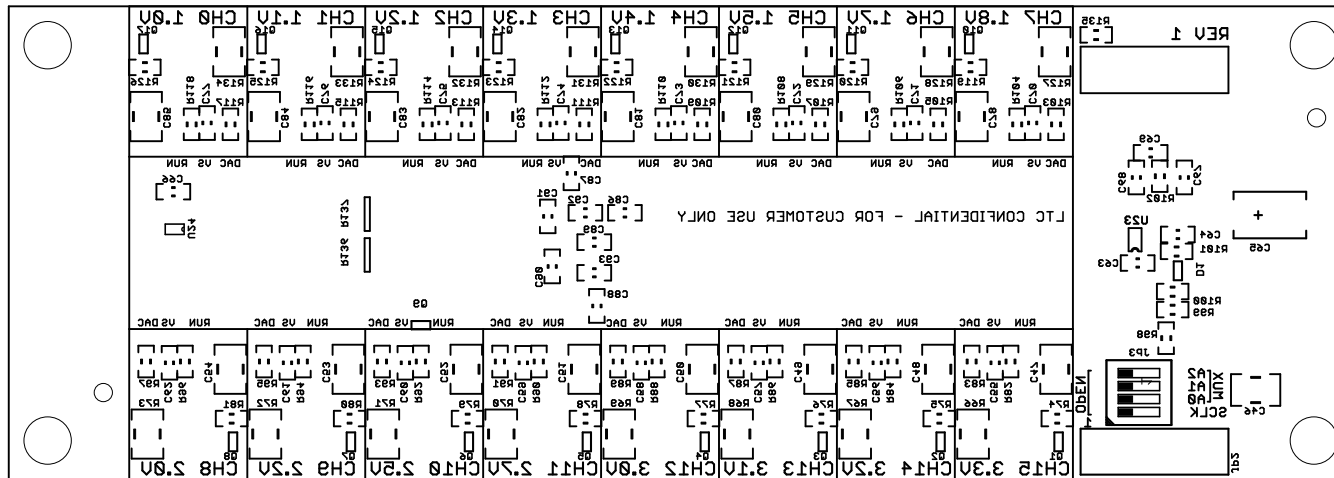
7. INSTALL TURRETS and LEDS AS SHOWN BELOW:


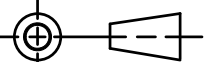


UNLESS OTHERWISE SPECIFIED DIMENSIONS ARE IN INCHES TOLERANCES ON ANGLE +/- 1° 0.XX" = +/- 0.01" 0.XXX" = +/- 0.005" INTERPRET DIM AND TOL PER ASME Y14.5M-1994	APPROVALS			 1630 MCCARTHY BLVD. MILPITAS, CA 95033 PH: (408) 432-1900 LTC CONFIDENTIAL FOR CUSTOMER USE ONLY		
		NAME	DATE			
	PCB DES.	R.S.	01-17-14			
	ENG	MIKE P.	01-17-14			
THIRD ANGLE PROJECTION					TITLE: TOP ASSEMBLY DRAWING LTC2980CY 16-CHANNEL POWER SYSTEM MANAGER	
						
DO NOT SCALE DRAWING	SCALE: NONE			SIZE N/A	IC NO. LTC2980 DEMO CIRCUIT 2198A	REV 1
				FILENAME:DC2198A_Rev1		SHEET 1 OF 13

REVISION HISTORY

ECO	REV	DESCRIPTION	APPROVED	DATE
-	1	PRODUCTION	MIKE P.	01/17/2014

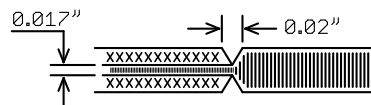


UNLESS OTHERWISE SPECIFIED DIMENSIONS ARE IN INCHES TOLERANCES ON ANGLE +/- 1° 0.XX" = +/- 0.01" 0.XXX" = +/- 0.005" INTERPRET DIM AND TOL PER ASME Y14.5M-1994	APPROVALS			 <div>1630 MCCARTHY BLVD. MILPITAS, CA 95033 PH: (408) 432-1900 LTC CONFIDENTIAL FOR CUSTOMER USE ONLY</div>			
		NAME	DATE				
	PCB DES.	R.S.	01-17-14				
	ENG	MIKE P.	01-17-14				
THIRD ANGLE PROJECTION				TITLE: BOTTOM ASSEMBLY DRAWING LTC2980CY 16-CHANNEL POWER SYSTEM MANAGER			
					SIZE	IC NO. LTC2980	REV
					N/A	DEMO CIRCUIT 2198A	1
DO NOT SCALE DRAWING	SCALE: NONE			FILENAME: DC2198A_Rev1		SHEET 2 OF 13	

NOTES: UNLESS OTHERWISE SPECIFIED

1. FAB PER IPC-A-600.
2. MATERIAL: EPOXY FIBERGLASS, NEMA GRADE FR-4
FINISHED THICKNESS TO BE 0.062" +/-0.005"
4-LAYER BOARD, 2 OZ. CU ON OUTER LAYERS,
1 OZ. CU ON INNER LAYERS,
FLAMMABILITY RATING: 94 V-2 MINIMUM.
3. SIZE: CUT TO DIMENSIONS AND TOLERANCES SHOWN.
0.00" ARE PRIMARY DATUMS.
4. FINISH: SMOBC USING LPI BOTH SIDES, COLOR BLACK.
ENIG FINISH. LEAD FREE SOLDER CAN BE USED
FOR PROTOTYPE BOARDS.
HIGH DEFINITION WHITE SILKSCREEN.

5. DRILL: PLATE THRU ALL HOLES WITH COPPER, 0.001"
THICK MIN. ALL HOLES SHALL BE DRILLED
+/-0.003" WITH RESPECT TO CTR. OF DRILLED
PAD. ALL HOLES FINISHED SIZE AFTER PLATING.
6. DROP ALL UNUSED PADS ON INNER LAYERS.
7. DO NOT ALTER ARTWORK e.g. TO ADD LOGO OR DATE CODE.
PAD SIZE CAN BE MODIFIED TO MEET END FINISH.
8. PCBs ARE TO BE RoHS COMPLIANT.
9. SCORING FOR PANELIZED PCB:

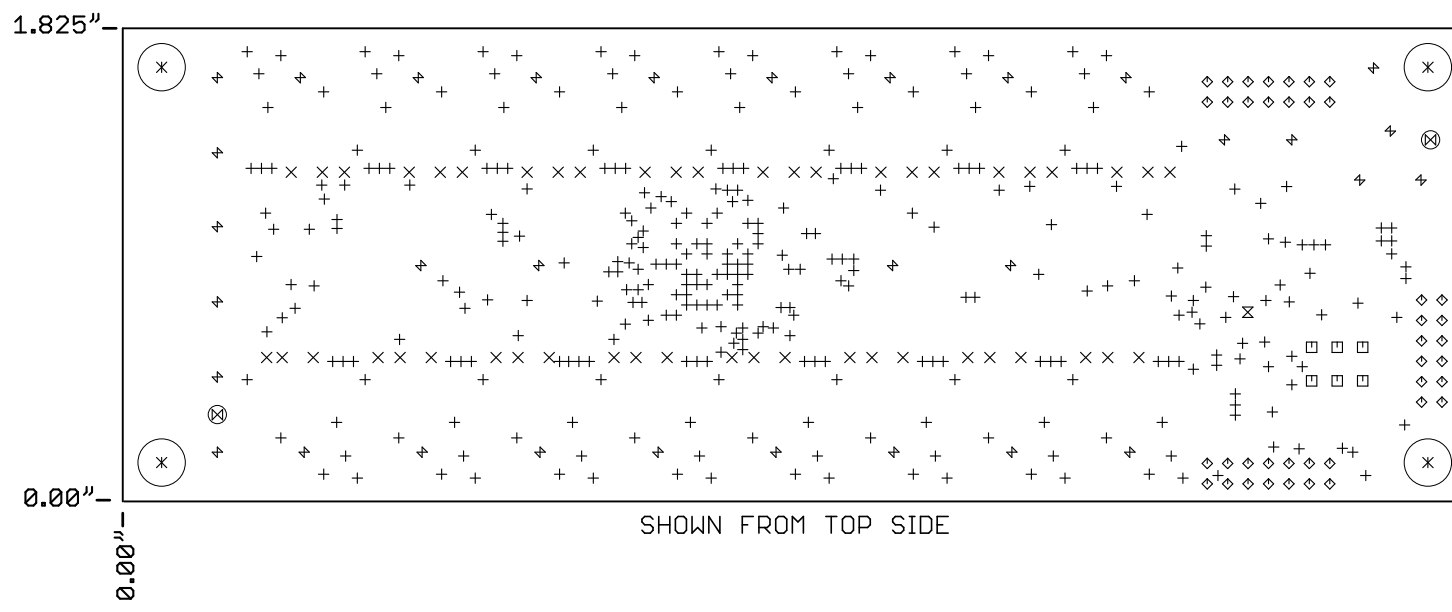


REVISION HISTORY

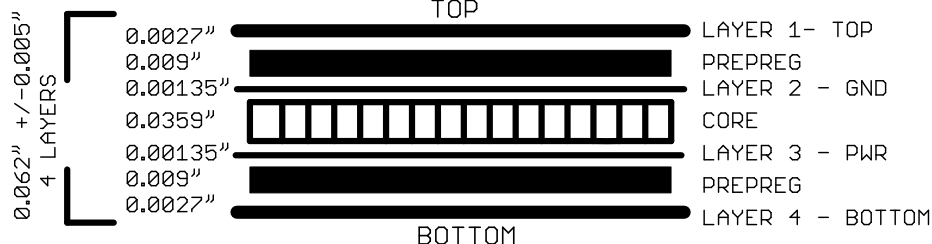
ECO	REV	DESCRIPTION	APPROVED	DATE
-	1	PRODUCTION	MIKE P.	01/17/2014


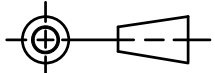
DRILL TABLE

Sym	Nº	Mils	MM	Qty	Plated
+	1	10	0.25	342	YES
x	2	15	0.38	48	YES
□	3	35	0.90	6	YES
◇	4	36	0.91	40	YES
⊗	5	67	1.70	1	YES
⊗	6	71	1.80	2	NOT
+	7	96	2.44	29	YES
+	8	118	3.00	3	YES
*	9	183	4.65	4	NOT



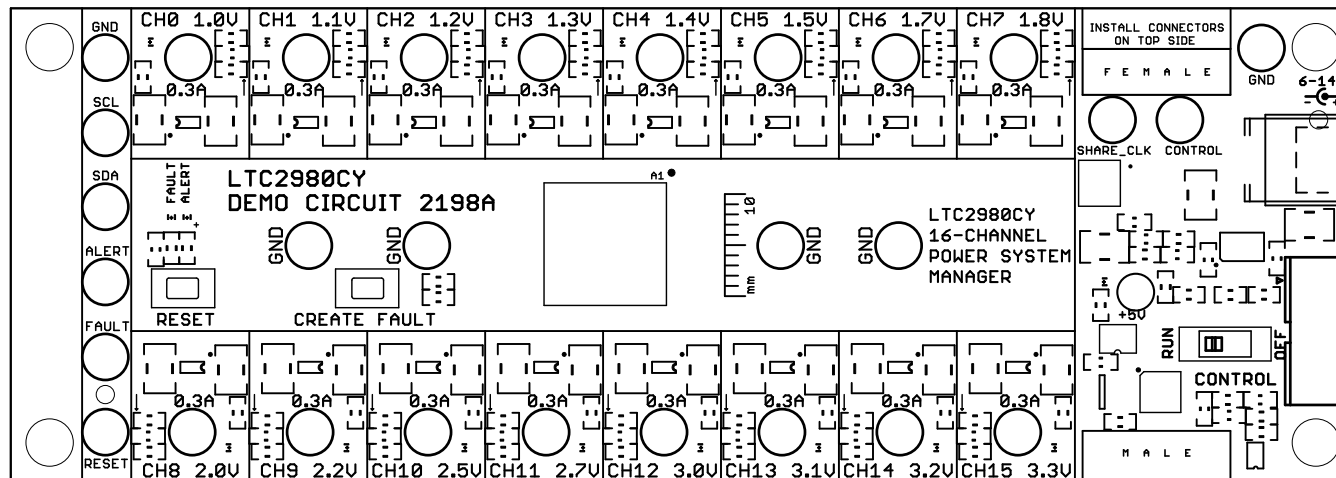
LAYER STRUCTURE


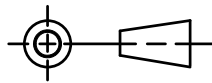


UNLESS OTHERWISE SPECIFIED DIMENSIONS ARE IN INCHES TOLERANCES ON ANGLE +/- 1° 0.XX" = +/- 0.01" 0.XXX" = +/- 0.005" INTERPRET DIM AND TOL PER ASME Y14.5M-1994	APPROVALS				1630 MCCARTHY BLVD. MILPITAS, CA 95033 PH: (408) 432-1900 LTC CONFIDENTIAL FOR CUSTOMER USE ONLY		
		NAME	DATE				
	PCB DES.	R.S.	01-17-14				
	ENG	MIKE P.	01-17-14				
	THIRD ANGLE PROJECTION						
					TITLE: FABRICATION DRAWING LTC2980CY 16-CHANNEL POWER SYSTEM MANAGER		
DO NOT SCALE DRAWING	SCALE: NONE	SIZE			IC NO.	LTC2980	REV
		N/A			DEMO CIRCUIT 2198A		1
		FILENAME: DC2198A_Rev1				SHEET 3 OF 13	

REVISION HISTORY

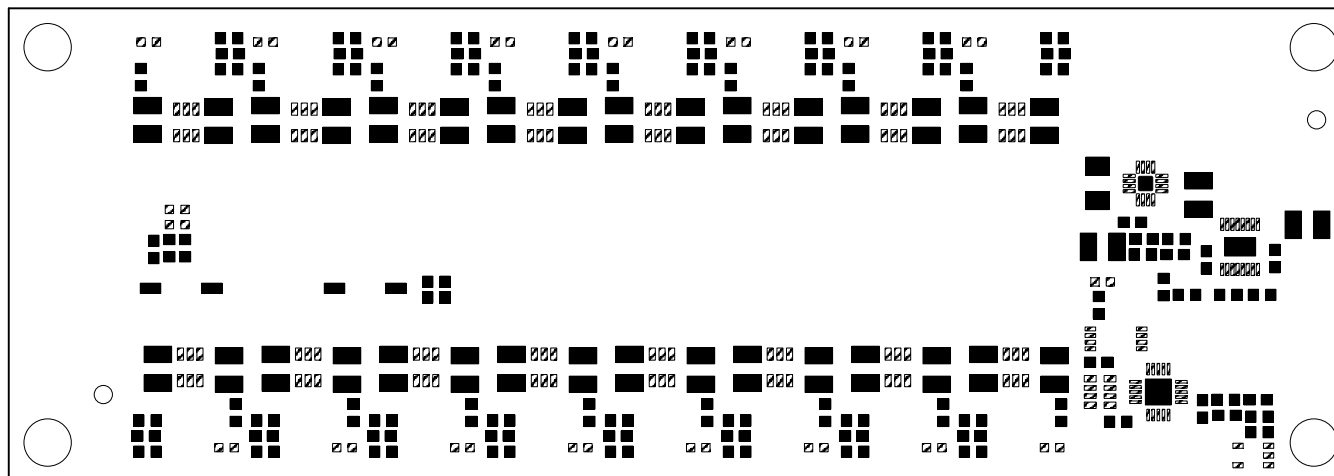
ECO	REV	DESCRIPTION	APPROVED	DATE
-	1	PRODUCTION	MIKE P.	01/17/2014


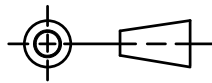


<p>UNLESS OTHERWISE SPECIFIED DIMENSIONS ARE IN INCHES TOLERANCES ON ANGLE +/- 1° 0.XX" = +/- 0.01" 0.XXX" = +/- 0.005" INTERPRET DIM AND TOL PER ASME Y14.5M-1994</p>	APPROVALS			 <p>1630 MCCARTHY BLVD. MILPITAS, CA 95033 PH: (408) 432-1900 LTC CONFIDENTIAL FOR CUSTOMER USE ONLY</p>
	PCB DES.	NAME	DATE	
	ENG	MIKE P.	01-17-14	
THIRD ANGLE PROJECTION				<p>TITLE: TOP SILKSCREEN LTC2980CY 16-CHANNEL POWER SYSTEM MANAGER</p>
				
DO NOT SCALE DRAWING	SCALE: NONE	FILENAME: DC2198A_Rev1	SHEET 4 OF 13	

REVISION HISTORY

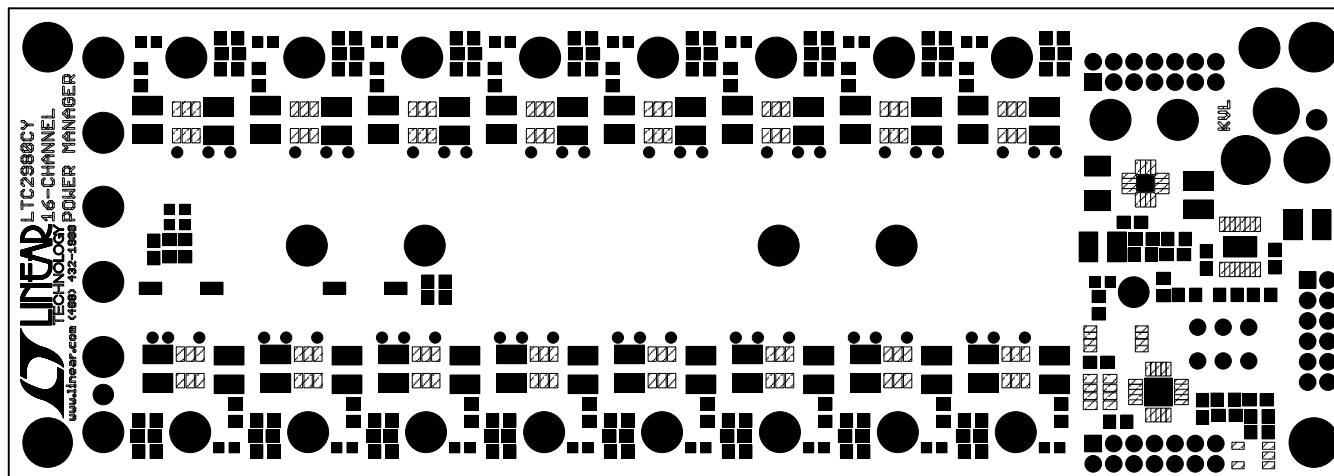
ECO	REV	DESCRIPTION	APPROVED	DATE
-	1	PRODUCTION	MIKE P.	01/17/2014



<p>UNLESS OTHERWISE SPECIFIED DIMENSIONS ARE IN INCHES TOLERANCES ON ANGLE +/- 1° 0.XX" = +/- 0.01" 0.XXX" = +/- 0.005" INTERPRET DIM AND TOL PER ASME Y14.5M-1994</p>	APPROVALS			 <p>1630 MCCARTHY BLVD. MILPITAS, CA 95033 PH: (408) 432-1900 LTC CONFIDENTIAL FOR CUSTOMER USE ONLY</p>
	PCB DES.	NAME	DATE	
	ENG	MIKE P.	01-17-14	
THIRD ANGLE PROJECTION				<p>TITLE: TOP PASTE LTC2980CY 16-CHANNEL POWER SYSTEM MANAGER</p>
				
DO NOT SCALE DRAWING	SCALE: NONE	SIZE	IC NO.	REV
		N/A	LTC2980	1
			DEMO CIRCUIT 2198A	
		FILENAME: DC2198A_Rev1		SHEET 5 OF 13

REVISION HISTORY

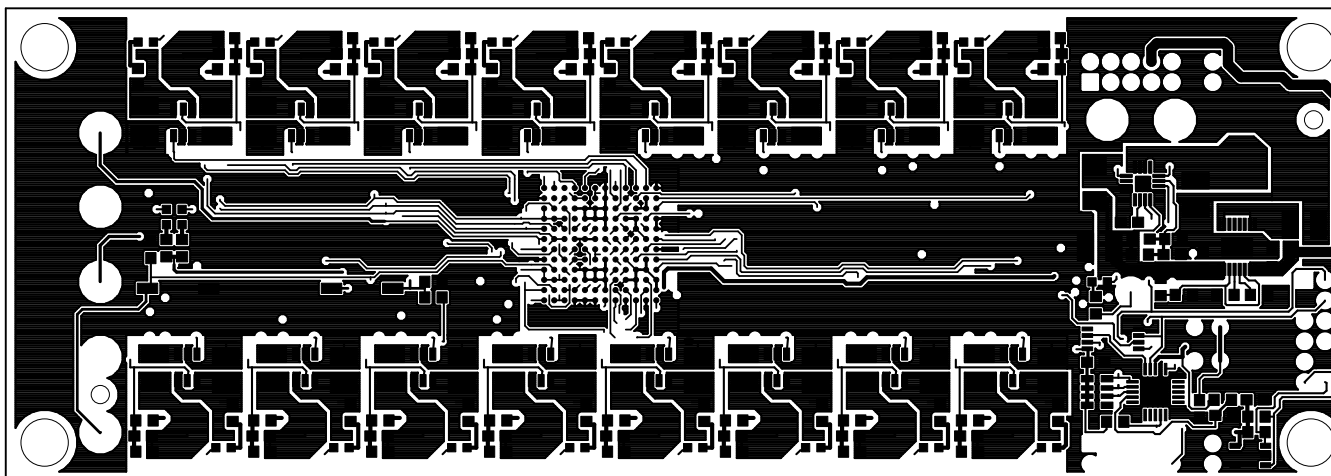
ECO	REV	DESCRIPTION	APPROVED	DATE
-	1	PRODUCTION	MIKE P.	01/17/2014



<p>UNLESS OTHERWISE SPECIFIED DIMENSIONS ARE IN INCHES TOLERANCES ON ANGLE +/- 1° 0.XX" = +/- 0.01" 0.XXX" = +/- 0.005" INTERPRET DIM AND TOL PER ASME Y14.5M-1994</p>	<p>APPROVALS</p>			<p>LINEAR TECHNOLOGY</p> <p>1630 MCCARTHY BLVD. MILPITAS, CA 95033 PH: (408) 432-1900 LTC CONFIDENTIAL FOR CUSTOMER USE ONLY</p>
		NAME	DATE	
	PCB DES.	R.S.	01-17-14	
	ENG	MIKE P.	01-17-14	
THIRD ANGLE PROJECTION				<p>TITLE: TOP SOLDERMASK LTC2980CY 16-CHANNEL POWER SYSTEM MANAGER</p>
DO NOT SCALE DRAWING	SCALE: NONE	<p>SIZE N/A</p>		<p>IC NO. LTC2980 DEMO CIRCUIT 2198A</p>
		<p>FILENAME: DC2198A_Rev1</p>		<p>REV 1</p>
				<p>SHEET 6 OF 13</p>

REVISION HISTORY

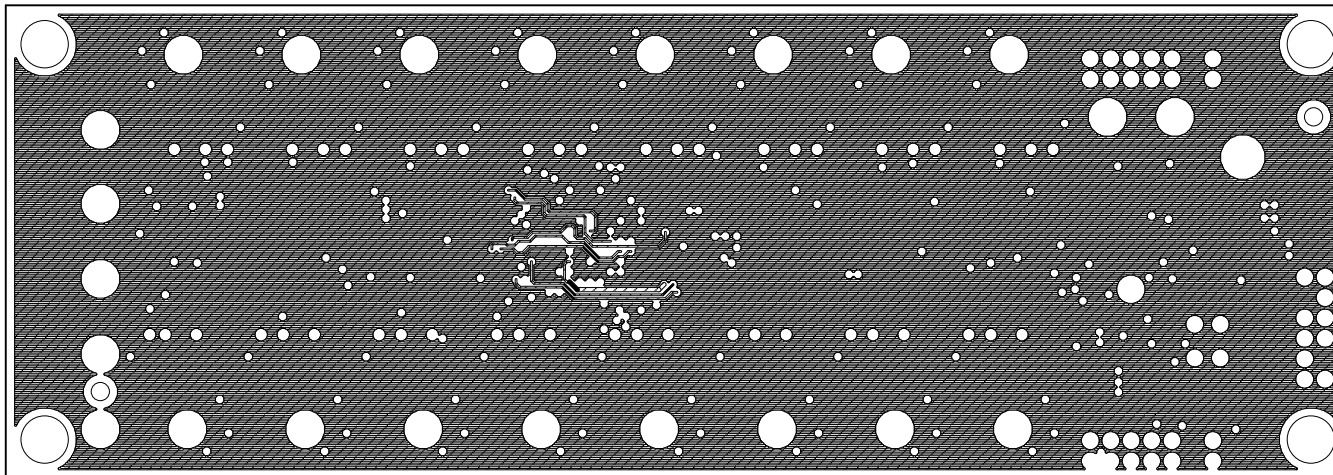
ECO	REV	DESCRIPTION	APPROVED	DATE
-	1	PRODUCTION	MIKE P.	01/17/2014


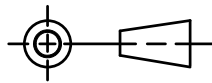


<p>UNLESS OTHERWISE SPECIFIED DIMENSIONS ARE IN INCHES TOLERANCES ON ANGLE +/- 1° 0.XX" = +/- 0.01" 0.XXX" = +/- 0.005" INTERPRET DIM AND TOL PER ASME Y14.5M-1994</p> <p>THIRD ANGLE PROJECTION</p> <p>DO NOT SCALE DRAWING</p>	<p>APPROVALS</p> <table border="1"> <thead> <tr> <th></th> <th>NAME</th> <th>DATE</th> </tr> </thead> <tbody> <tr> <td>PCB DES.</td> <td>R.S.</td> <td>01-17-14</td> </tr> <tr> <td>ENG</td> <td>MIKE P.</td> <td>01-17-14</td> </tr> <tr> <td></td> <td></td> <td></td> </tr> <tr> <td></td> <td></td> <td></td> </tr> <tr> <td></td> <td></td> <td></td> </tr> </tbody> </table>				NAME	DATE	PCB DES.	R.S.	01-17-14	ENG	MIKE P.	01-17-14										<p>LINEAR TECHNOLOGY</p> <p>1630 MCCARTHY BLVD. MILPITAS, CA 95033 PH: (408) 432-1900 LTC CONFIDENTIAL FOR CUSTOMER USE ONLY</p>		
		NAME	DATE																					
	PCB DES.	R.S.	01-17-14																					
	ENG	MIKE P.	01-17-14																					
<p>TITLE: 1 - TOP COPPER (SIGNAL) LTC2980CY 16-CHANNEL POWER SYSTEM MANAGER</p>																								
<p>SIZE N/A</p>		<p>IC NO. LTC2980 DEMO CIRCUIT 2198A</p>		<p>REV 1</p>																				
<p>FILENAME: DC2198A_Rev1</p>				<p>SHEET 7 OF 13</p>																				

REVISION HISTORY

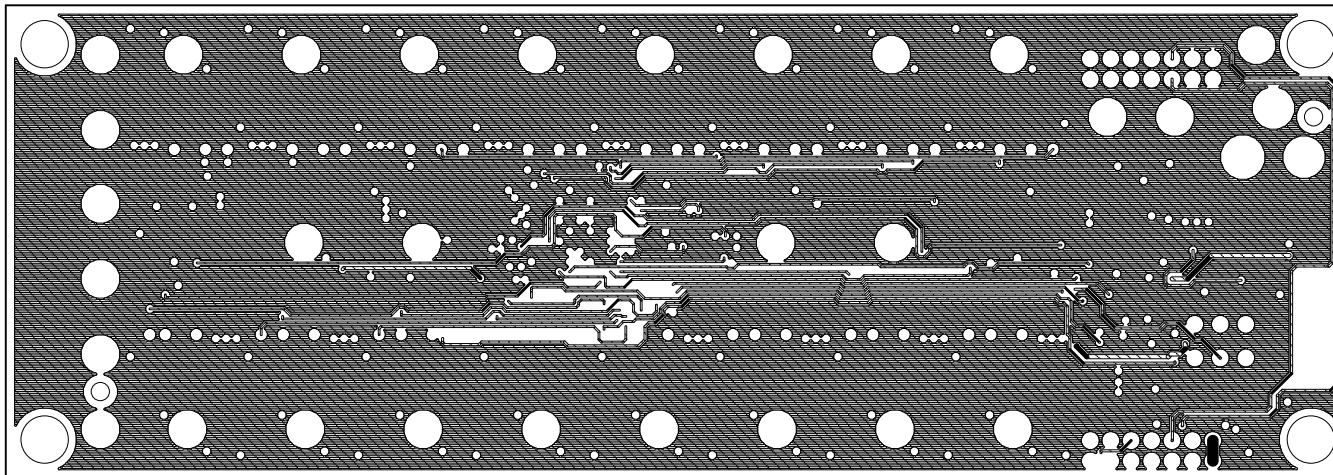
ECO	REV	DESCRIPTION	APPROVED	DATE
-	1	PRODUCTION	MIKE P.	01/17/2014


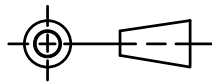


UNLESS OTHERWISE SPECIFIED DIMENSIONS ARE IN INCHES TOLERANCES ON ANGLE +/- 1° 0.XX" = +/- 0.01" 0.XXX" = +/- 0.005" INTERPRET DIM AND TOL PER ASME Y14.5M-1994	APPROVALS			 1630 MCCARTHY BLVD. MILPITAS, CA 95033 PH: (408) 432-1900 LTC CONFIDENTIAL FOR CUSTOMER USE ONLY			
		NAME	DATE				
	PCB DES.	R.S.	01-17-14				
	ENG	MIKE P.	01-17-14				
THIRD ANGLE PROJECTION				TITLE: 2 - INNER COPPER (GND PLANE) LTC2980CY 16-CHANNEL POWER SYSTEM MANAGER			
					SIZE N/A	IC NO. LTC2980 DEMO CIRCUIT 2198A	REV 1
	DO NOT SCALE DRAWING		SCALE: NONE		FILENAME: DC2198A_Rev1		SHEET 8 OF 13

REVISION HISTORY

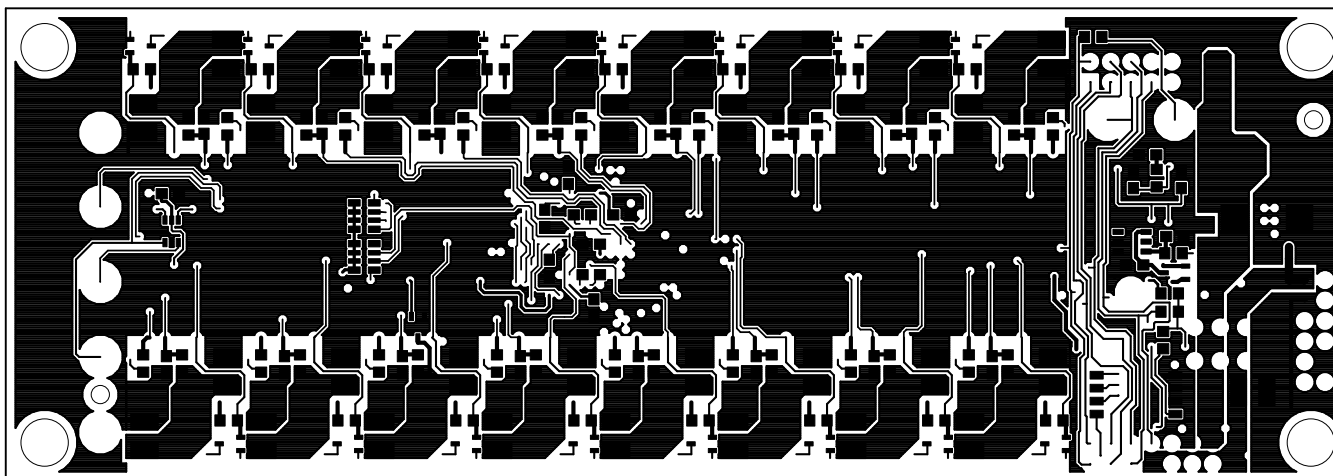
ECO	REV	DESCRIPTION	APPROVED	DATE
-	1	PRODUCTION	MIKE P.	01/17/2014



<p>UNLESS OTHERWISE SPECIFIED DIMENSIONS ARE IN INCHES TOLERANCES ON ANGLE +/- 1° 0.XX" = +/- 0.01" 0.XXX" = +/- 0.005" INTERPRET DIM AND TOL PER ASME Y14.5M-1994</p>	<p>APPROVALS</p> <table border="1"> <tr> <th></th> <th>NAME</th> <th>DATE</th> </tr> <tr> <td>PCB DES.</td> <td>R.S.</td> <td>01-17-14</td> </tr> <tr> <td>ENG</td> <td>MIKE P.</td> <td>01-17-14</td> </tr> <tr> <td>THIRD ANGLE PROJECTION</td> <td></td> <td></td> </tr> <tr> <td></td> <td></td> <td></td> </tr> <tr> <td></td> <td></td> <td></td> </tr> <tr> <td></td> <td></td> <td></td> </tr> </table>				NAME	DATE	PCB DES.	R.S.	01-17-14	ENG	MIKE P.	01-17-14	THIRD ANGLE PROJECTION												 <p>1630 MCCARTHY BLVD. MILPITAS, CA 95033 PH: (408) 432-1900 LTC CONFIDENTIAL FOR CUSTOMER USE ONLY</p>	
		NAME	DATE																							
	PCB DES.	R.S.	01-17-14																							
	ENG	MIKE P.	01-17-14																							
THIRD ANGLE PROJECTION																										
	<p>TITLE: 3 - INNER COPPER (POWER) LTC2980CY 16-CHANNEL POWER SYSTEM MANAGER</p>																									
<p>DO NOT SCALE DRAWING</p>	<p>SCALE: NONE</p>	<p>SIZE N/A</p>	<p>IC NO. LTC2980 DEMO CIRCUIT 2198A</p>	<p>REV 1</p>																						
		<p>FILENAME: DC2198A_Rev1</p>	<p>SHEET 9 OF 13</p>																							

REVISION HISTORY

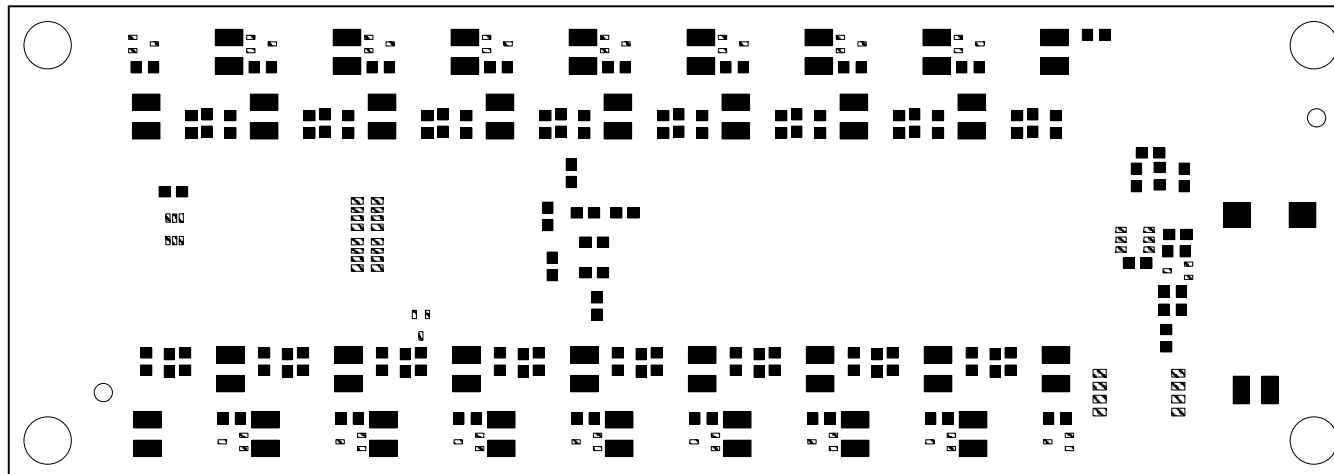
ECO	REV	DESCRIPTION	APPROVED	DATE
-	1	PRODUCTION	MIKE P.	01/17/2014



<p>UNLESS OTHERWISE SPECIFIED DIMENSIONS ARE IN INCHES TOLERANCES ON ANGLE +/- 1° 0.XX" = +/- 0.01" 0.XXX" = +/- 0.005" INTERPRET DIM AND TOL PER ASME Y14.5M-1994</p>	<p>APPROVALS</p>			<p>LINEAR TECHNOLOGY</p> <p>1630 MCCARTHY BLVD. MILPITAS, CA 95033 PH: (408) 432-1900 LTC CONFIDENTIAL FOR CUSTOMER USE ONLY</p>
		NAME	DATE	
	PCB DES.	R.S.	01-17-14	
	ENG	MIKE P.	01-17-14	
THIRD ANGLE PROJECTION				<p>TITLE: 4 - BOTTOM COPPER (SIGNAL) LTC2980CY 16-CHANNEL POWER SYSTEM MANAGER</p>
				<p>SIZE: N/A</p>
DO NOT SCALE DRAWING	SCALE: NONE	<p>IC NO. LTC2980 DEMO CIRCUIT 2198A</p>		<p>REV 1</p>
		<p>FILENAME: DC2198A_Rev1</p>		<p>SHEET 10 OF 13</p>

REVISION HISTORY

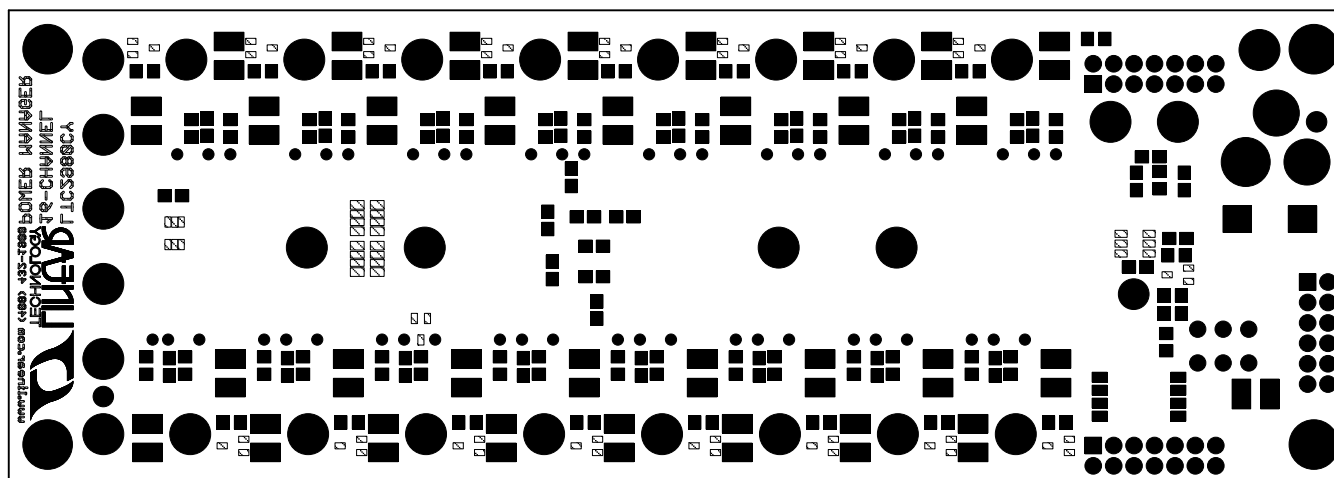
ECO	REV	DESCRIPTION	APPROVED	DATE
-	1	PRODUCTION	MIKE P.	01/17/2014



<p>UNLESS OTHERWISE SPECIFIED DIMENSIONS ARE IN INCHES TOLERANCES ON ANGLE +/- 1° 0.XX" = +/- 0.01" 0.XXX" = +/- 0.005" INTERPRET DIM AND TOL PER ASME Y14.5M-1994</p>	<p>APPROVALS</p>			<p>LINEAR TECHNOLOGY</p> <p>1630 MCCARTHY BLVD. MILPITAS, CA 95033 PH: (408) 432-1900 LTC CONFIDENTIAL FOR CUSTOMER USE ONLY</p>
	PCB DES.	NAME	DATE	
	ENG	MIKE P.	01-17-14	
THIRD ANGLE PROJECTION	<p>TITLE: BOTTOM PASTE LTC2980CY 16-CHANNEL POWER SYSTEM MANAGER</p>			
	<p>SIZE N/A</p>			<p>IC NO. LTC2980 DEMO CIRCUIT 2198A</p>
DO NOT SCALE DRAWING	SCALE: NONE			<p>REV 1</p>
FILENAME: DC2198A_Rev1				SHEET 11 OF 13

REVISION HISTORY

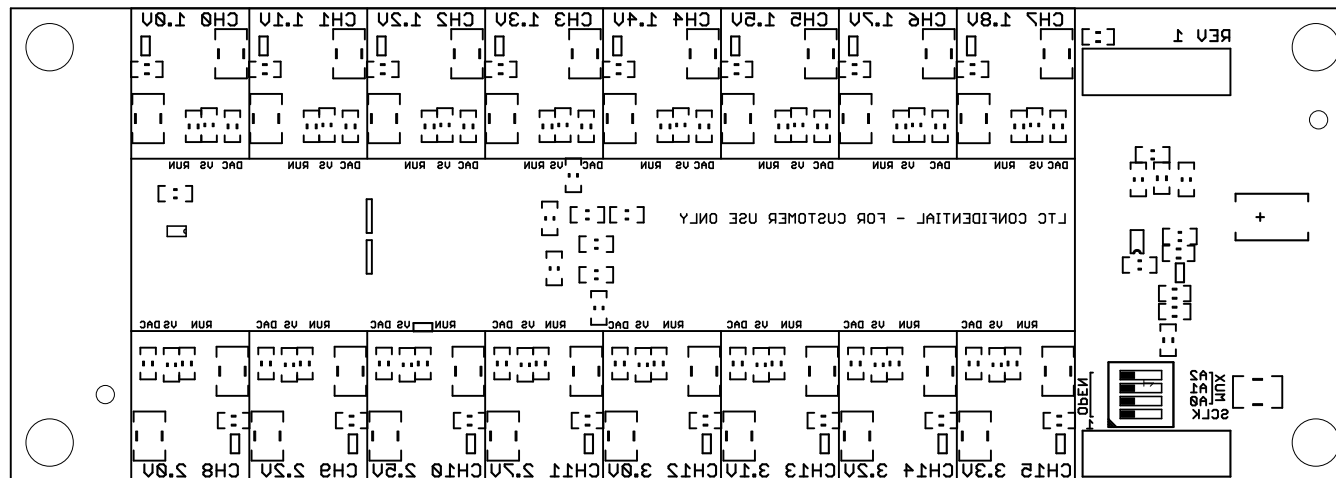
ECO	REV	DESCRIPTION	APPROVED	DATE
-	1	PRODUCTION	MIKE P.	01/17/2014


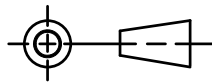


UNLESS OTHERWISE SPECIFIED DIMENSIONS ARE IN INCHES TOLERANCES ON ANGLE +/- 1° 0.XX" = +/- 0.01" 0.XXX" = +/- 0.005" INTERPRET DIM AND TOL PER ASME Y14.5M-1994	APPROVALS				1630 MCCARTHY BLVD. MILPITAS, CA 95033 PH: (408) 432-1900 LTC CONFIDENTIAL FOR CUSTOMER USE ONLY	
		NAME	DATE		TITLE: BOTTOM SOLDERMASK LTC2980CY 16-CHANNEL POWER SYSTEM MANAGER	
	PCB DES.	R.S.	01-17-14			
	ENG	MIKE P.	01-17-14			
THIRD ANGLE PROJECTION						
DO NOT SCALE DRAWING	SCALE: NONE			SIZE N/A	IC NO. LTC2980 DEMO CIRCUIT 2198A	REV 1
FILENAME: DC2198A_Rev1				SHEET 12 OF 13		

REVISION HISTORY

ECO	REV	DESCRIPTION	APPROVED	DATE
-	1	PRODUCTION	MIKE P.	01/17/2014



<p>UNLESS OTHERWISE SPECIFIED DIMENSIONS ARE IN INCHES TOLERANCES ON ANGLE +/- 1° 0.XX" = +/- 0.01" 0.XXX" = +/- 0.005" INTERPRET DIM AND TOL PER ASME Y14.5M-1994</p>	APPROVALS			 <p>1630 MCCARTHY BLVD. MILPITAS, CA 95033 PH: (408) 432-1900 LTC CONFIDENTIAL FOR CUSTOMER USE ONLY</p>
		NAME	DATE	
	PCB DES.	R.S.	01-17-14	
	ENG	MIKE P.	01-17-14	
THIRD ANGLE PROJECTION				<p>TITLE: BOTTOM SILKSCREEN LTC2980CY 16-CHANNEL POWER SYSTEM MANAGER</p>
				
DO NOT SCALE DRAWING	SCALE: NONE	FILENAME: DC2198A_Rev1	SHEET 13 OF 13	
		SIZE N/A	IC NO. LTC2980 DEMO CIRCUIT 2198A	REV 1