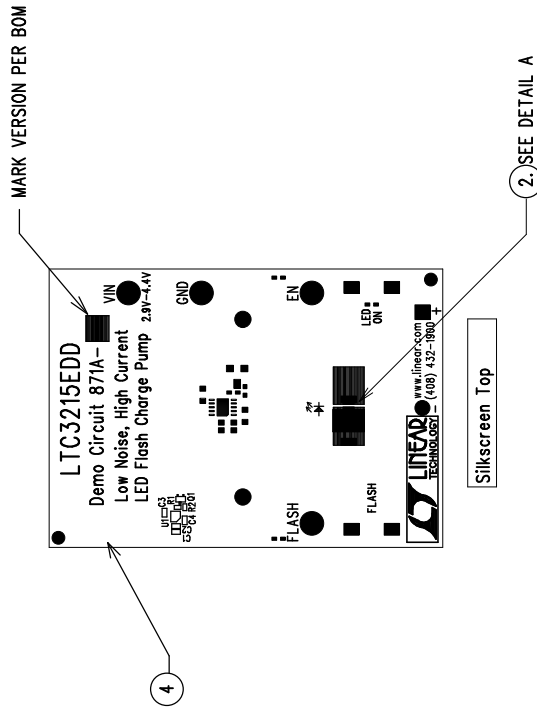
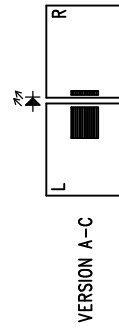
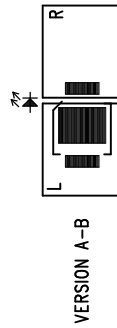
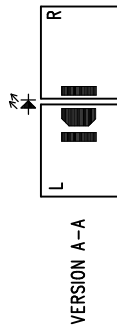
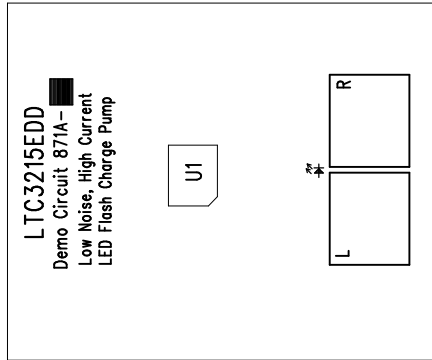


REVISIONS			
REV	DESCRIPTION	APPR	DATE




**NOTES : Unless Otherwise Specified**

1. BREAK BOARDS FROM THE PANEL WHEN ASSEMBLY IS COMPLETE.
2. HAND ASSEMBLE LED1 AS SHOWN ON DETAIL A.
3. OPTIONAL COMPONENTS ARE UNSTUFFED AND SHOULD BE FREE OF SOLDER AFTER ASSEMBLY.
4. WAVE SOLDER BACK SIDE EXPOSED COPPER AREA.



DETAIL A

APPROVALS			 LINEAR TECHNOLOGY		1630 McCarthy Blvd. Milpitas, CA 95035 Ph: (408)432-1900	
					TITLE: LTC3215EDD, Low Noise, High Current LED Flash Charge Pump	
DRAWN	INIT	DATE				
CHECK						
DESIGN	JUNE WU	12/2/04				
ENGR	Keith S.	12/2/04				
			SIZE	DEMO	REV.	A
				A	DC871A	
SCALE = NONE			DES-230733		SHT 1 of 1	

ASSY DRAWING