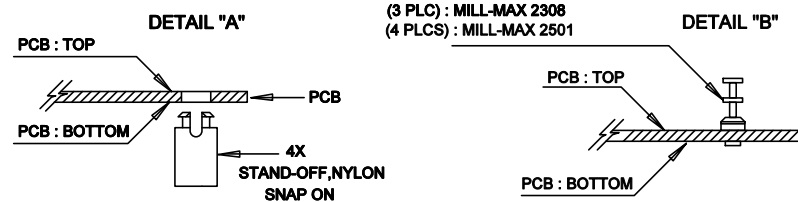
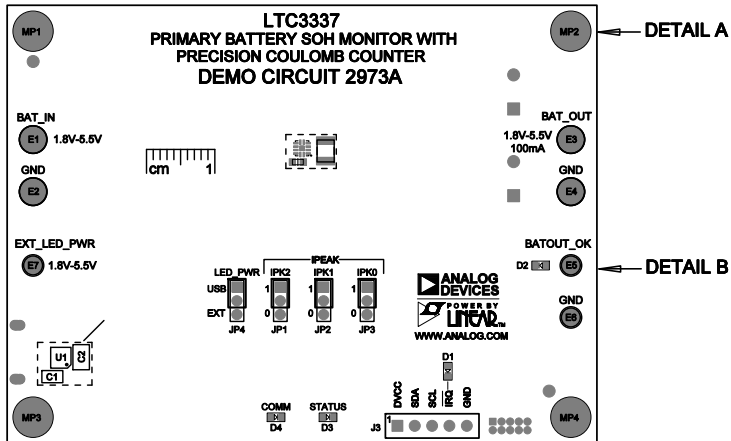




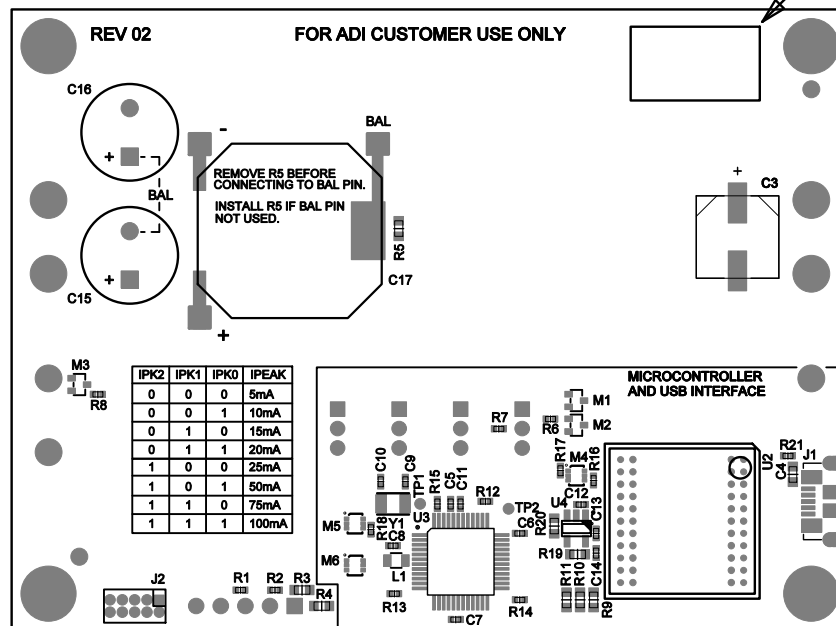
ECO	REV	DESCRIPTION	APP. ENG.	DATE
-	02	PRODUCTION	ZP	4-23-2020

NOTES: UNLESS OTHERWISE SPECIFIED

1. WORKMANSHIP SHALL BE IN ACCORDANCE WITH IPC-A-610.
2. ASSEMBLY REFLOW PROFILE SHALL BE IN ACCORDANCE WITH J-STD-020 WITH MAXIMUM SOLDER TEMPERATURE OF 250 DEGREES CELSIUS.
3. PARTS TO OMIT WILL BE SPECIFIED ON THE BILL OF MATERIALS
LOCATIONS OF OMITTED PARTS SHALL BE FREE OF SOLDER.
MASK THE SOLDER STENCIL WHERE SMT PARTS ARE OMITTED.
4. INSTALL SHUNTS AS SHOWN ON ASSY DRAWING.
5. DEPANELIZE BOARDS AFTER ASSEMBLY AND ROUTE-OUT THE BREAKOUT TABS ON FOUR SIDES OF THE BOARD EDGE.
6. APPLY ASSEMBLY STAMP OR QA STAMP TO BOTTOM OF BOARD (UNSHOWY AREA).
7. INSTALL TURRETS, STAND-OFFS AS SHOWN BELOW:
8. APPLY DEMO S/N AT AREA ON BOTTOM SIDE AS SHOWN ON SHEET 2.



APPROVALS		 ANALOG DEVICES		 POWER BY LINEAR™	
PCB DES	NC	FOR A4I CUSTOMER USE ONLY			
APP ENG	ZP	TITLE: TOP ASSEMBLY DRAWING PRIMARY BATTERY SOH MONITOR WITH PRECISION COULOMB COUNTER			
		SIZE	IC NO.	LTC3337	REV.
		N/A		DEMO CIRCUIT 2973A	01
SCALE = NONE					SHT 1 OF 1



8 DEMO S/N LABEL
APPLY IN THIS AREA

APPROVALS

PCB DES. NC

APP ENG. ZP

SCALE = NONE



FOR ADI CUSTOMER USE ONLY

TITLE: BOTTOM ASSEMBLY DRAWING
PRIMARY BATTERY SOH MONITOR WITH
PRECISION COULOMB COUNTER

SIZE N/A	IC NO. LTC3337 DEMO CIRCUIT 2973A	REV 02
-------------	--------------------------------------	-----------

SHT 2 of 2