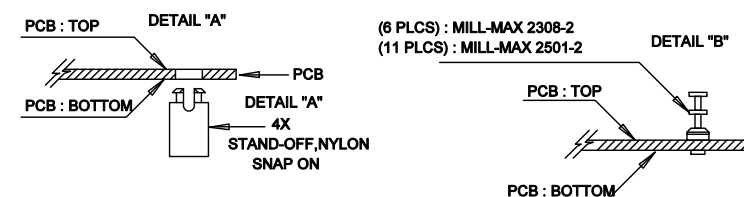


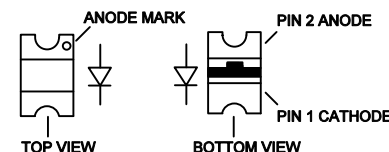
REVISION HISTORY				
ECO	REV	DESCRIPTION	APPR	DATE
-	04	PRODUCTION	MM	10-17-17

## NOTES: UNLESS OTHERWISE SPECIFIED

- WORKMANSHIP SHALL BE IN ACCORDANCE WITH IPC-A-610, CLASS 2.
- ASSEMBLY REFLOW PROFILE SHALL BE IN ACCORDANCE WITH J-STD-020 WITH MAXIMUM SOLDER TEMPERATURE OF 250 DEGREES CELSIUS.
- PARTS TO OMIT WILL BE SPECIFIED ON THE BILL OF MATERIALS  
LOCATIONS OF OMITTED PARTS SHALL BE FREE OF SOLDER.  
MASK THE SOLDER STENCIL WHERE SMT PARTS ARE OMITTED.
- INSTALL SHUNTS AS SHOWN ON ASSY DRAWING.
- DEPANELIZE BOARDS AFTER ASSEMBLY AND ROUTE-OUT THE BREAKOUT TABS ON FOUR SIDES OF THE BOARD EDGE.
- APPLY ASSEMBLY STAMP OR QA STAMP TO BOTTOM OF BOARD (UNSHOWY AREA).
- INSTALL TURRETS AND STAND-OFFS AS SHOWN BELOW:

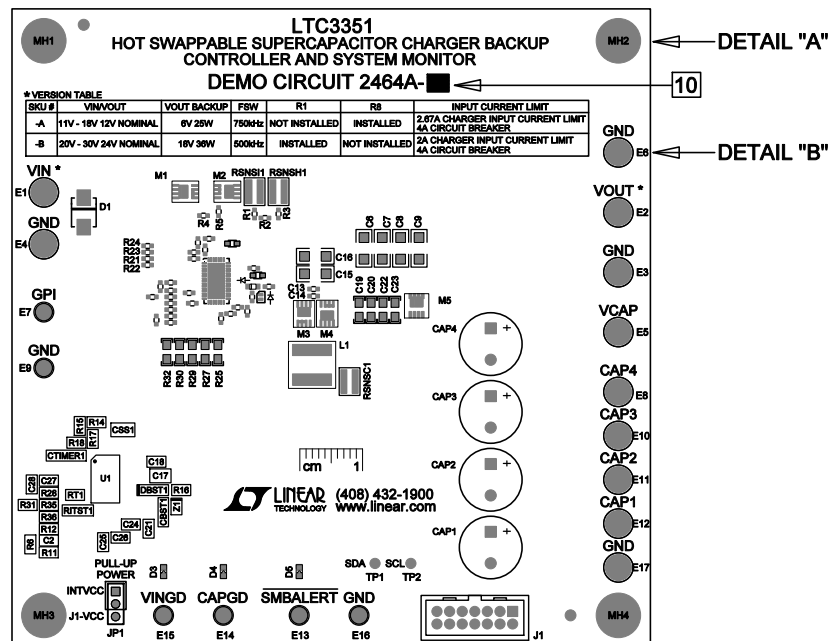


- INSTALL LED'S D3, D4 AND D5 AS SHOWN:



- APPLY DEMO S/N AT AREA ON BOTTOM SIDE AS SHOWN ON SHEET 2.

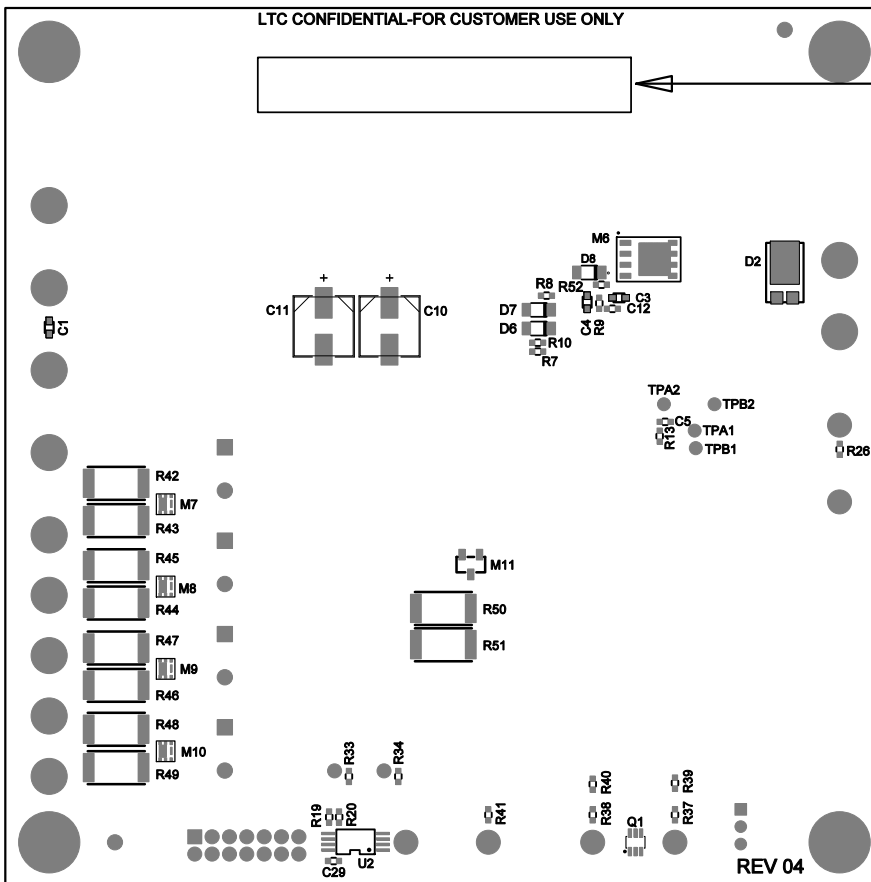
- THERE ARE TWO ASSEMBLY VERSIONS FOR THIS DESIGN: -A AND -B  
PLEASE SEE BILL OF MATERIALS AND TABLE BELOW TO MARK EACH VERSION  
CORRECTLY BY BLACK PERMANENT MARKER.



### \* VERSION TABLE

SKU #	VIN/VOUT	VOUT BACKUP	FSW	R1	R8	INPUT CURRENT LIMIT
-A	11V - 18V 12V NOMINAL	6V 25W	750kHz	NOT INSTALLED	INSTALLED	2.67A CHARGER INPUT CURRENT LIMIT 4A CIRCUIT BREAKER
-B	20V - 30V 24V NOMINAL	18V 36W	500kHz	INSTALLED	NOT INSTALLED	2A CHARGER INPUT CURRENT LIMIT 4A CIRCUIT BREAKER

APPROVALS		LINEAR TECHNOLOGY	
PCB DES.	NC	TITLE: TOP ASSEMBLY DRAWING: HOT SWAPPABLE SUPERCAPACITOR CHARGER BACKUP CONTROLLER AND SYSTEM MONITOR	
APP ENG.	MM		
		SIZE	IC NO.
		N/A	LTC3351
			DEMO CIRCUIT 2464A-A/B
			REV. 04
SCALE = NONE		FILENAME: SHT 1 of 2	



9 DEMO S/N LABEL  
APPLY IN THIS AREA

## APPROVALS

PCB DES.	NC
APP ENG.	MM



1630 MCCARTHY BLVD  
MILPITAS, CA 95035  
PH: (408)432-1900  
www.linear.com  
LTC CONFIDENTIAL-  
FOR CUSTOMER USE ONLY

TITLE: BOTTOM ASSEMBLY DRAWING

HOT SWAPPABLE SUPERCAPACITOR CHARGER  
BACKUP CONTROLLER AND SYSTEM MONITOR

SIZE N/A	IC NO. LTC3351 DEMO CIRCUIT 2464A-A/B	REV 04
-------------	--	-----------

SCALE = NONE

FILENAME:

SHT 2 of 2