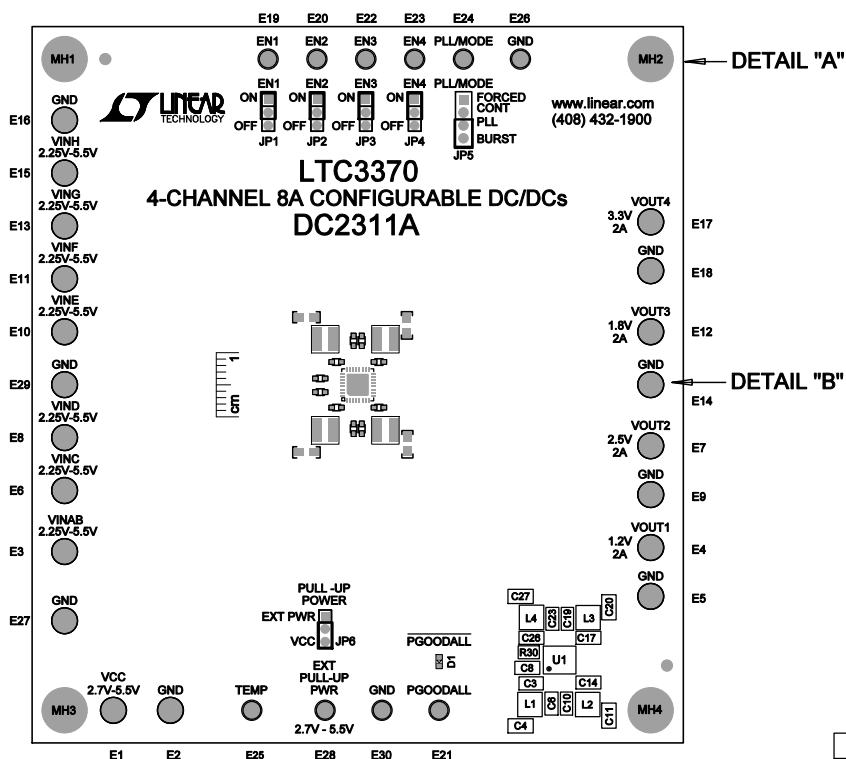
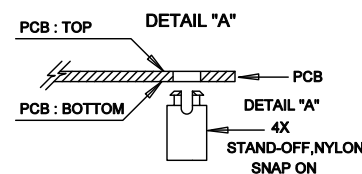


REVISION HISTORY				
ECO	REV	DESCRIPTION	APPR	DATE
-	2	PRODUCTION FAB	MARTY M.	11-19-14

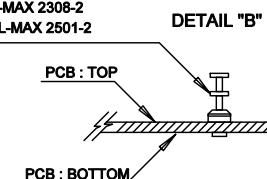


NOTES: UNLESS OTHERWISE SPECIFIED

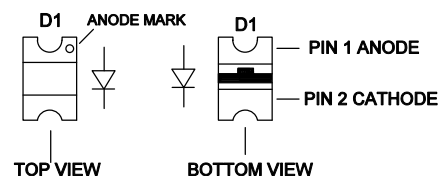
1. WORKMANSHIP SHALL BE IN ACCORDANCE WITH IPC-A-610.
2. ASSEMBLY REFLOW PROFILE SHALL BE IN ACCORDANCE WITH J-STD-020 WITH MAXIMUM SOLDER TEMPERATURE OF 250 DEGREES CELSIUS.
3. PARTS TO OMIT WILL BE SPECIFIED ON THE BILL OF MATERIALS. LOCATIONS OF OMITTED PARTS SHALL BE FREE OF SOLDER. MASK THE SOLDER STENCIL WHERE SMT PARTS ARE OMITTED.
4. INSTALL SHUNTS AS SHOWN ON ASSY DRAWING.
5. DEPANELIZE BOARDS AFTER ASSEMBLY AND ROUTE-OUT THE BREAKOUT TABS ON FOUR SIDES OF THE BOARD EDGE.
6. DO NOT APPLY ANY KIND OF ASSEMBLY STAMP OR QA STAMP TO ANY BOARD.
7. INSTALL TURRETS, STAND-OFFS AND BANANA JACKS AS SHOWN BELOW:



(9 PLCS) : MILL-MAX 2308-2
(20 PLCS) : MILL-MAX 2501-2



8. INSTALL LED D1-D4 AS SHOWN:



APPROVALS		LINEAR TECHNOLOGY	
PCB DES.	NC	1630 MCCARTHY BLVD MILPITAS, CA 95038 PH: (408)432-1900 www.Linear.com	
APP ENG.	MARTY M.	TITLE: TOP ASSEMBLY DRAWING: 4-CHANNEL 8A CONFIGURABLE BUCK DC/DCs	
		SIZE IC NO. LTC3370	
		N/A DEMO CIRCUIT 2311A	
		REV. 2	
SCALE = NONE		FILENAME: DC2311A-2.PCB	SHT 1 of 2