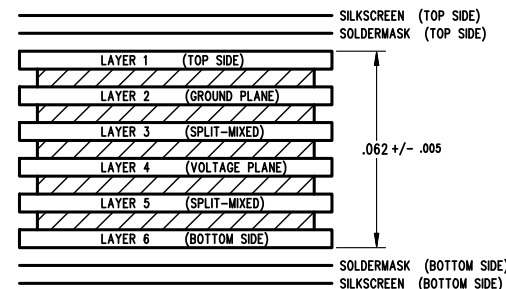


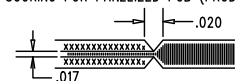
REVISION HISTORY			
ECO	REV	DESCRIPTION	APPR DATE
-	5	PRODUCTION FAB	GEORGE B. 8-6-13

# LAYER STRUCTURE 6 LAYER

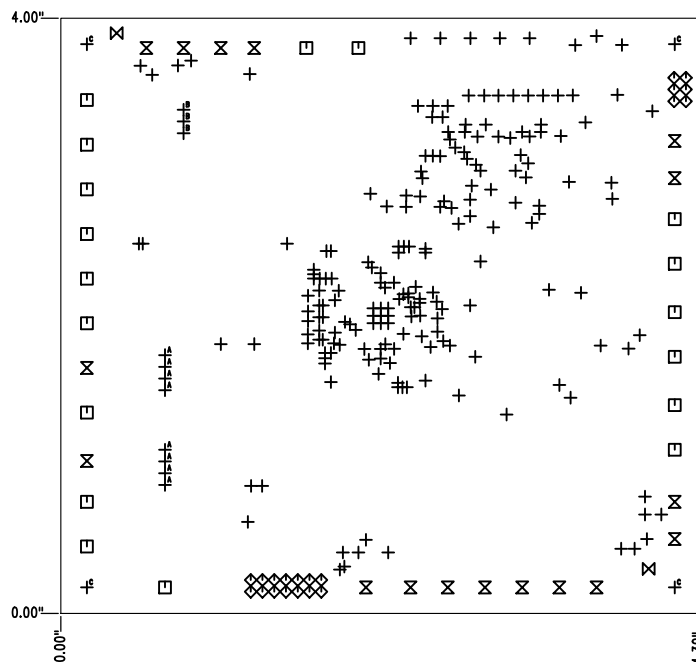


## NOTES: UNLESS OTHERWISE SPECIFIED


- FAB PER IPC-A-600.
- MATERIAL: -LEAD FREE ASSEMBLY COMPLIANT, ISOLA FR-370HR OR EQUIVALENT.  
-FINISHED THICKNESS TO BE  $0.062" \pm .005"$   
-TOTAL OF 6 LAYERS WITH 2 OZ. CU ON THE OUTER LAYERS AND 1 OZ. CU ON THE INNER LAYERS.  
-FLAMMABILITY RATING: 94 V-0 MINIMUM.
- SIZE: CUT TO DIMENSIONS AND TOLERANCES SHOWN.  
 $0.00"$  ARE PRIMARY DATUMS.
- DRILLING: -DRILL HOLES PER SCHEDULE. PLATE THROUGH HOLES WITH COPPER,  $0.001"$  THICK MIN.  
-ALL HOLE SIZES ARE SPECIFIED AFTER PLATING.  
-HOLE LOCATION TOLERANCES ARE  $\pm 0.003"$  IN RELATION TO CENTER
- FINISH: -SMOBC USING LPI BOTH SIDES, COLOR GREEN.  
-GOLD IMMERSION BOTH SIDES.  
-FOR SILKSCREENS: USE WHITE NON-CONDUCTIVE INK.
- DO NOT ALTER ARTWORK e.g. TO ADD LOGO OR DATE CODE.  
PAD SIZE CAN BE MODIFIED TO MEET END FINISH.
- PCBS ARE TO BE RoHS COMPLIANT.
- SCORING FOR PANELIZED PCB (PRODUCTION FAB ONLY):



- DO NOT ALTER SOLDER MASK MAINTAIN  $.003"$  OVERSIZE ON SMT PADS. A  $.005"$  WEBBING IS REQUIRED BETWEEN SMD PADS.



SIZE	QTY	SYM	PLATED	TOL
10	198	+	YES	$\pm 0.003$
94	18	□	YES	$\pm 0.003$
35	20	◇	YES	$\pm 0.003$
63	17	⊗	YES	$\pm 0.003$
70	2	⊗	NO	$\pm 0.003$
37	8	⊕ <sup>A</sup>	YES	$\pm 0.003$
31	3	⊕ <sup>B</sup>	YES	$\pm 0.003$
190	4	⊕ <sup>C</sup>	YES	$\pm 0.003$

UNLESS OTHERWISE SPECIFIED DIMENSIONS ARE IN INCHES TOLERANCES ON ANGLE $\pm 1$ $0.XX" = \pm 0.01"$ $0.XXX" = \pm 0.005"$ INTERPRET DIM AND TOL PER ASME Y14.5M-1994	APPROVALS		 <div>1630 MCCARTHY BLVD MILPITAS, CA 95035 PH: (408)432-1900 <a href="http://www.linear.com">www.linear.com</a> LTC CONFIDENTIAL - FOR CUSTOMER USE ONLY</div>	
	PCB DES. NC	APP ENG. GEORGE B.		
	THIRD ANGLE PROJECTION			
	DO NOT SCALE DRAWING			
SCALE: NONE		SIZE N/A	IC NO. LTC3676EUJ/LTC3676EUJ-1	REV. 5
		FILENAME: DC1976A-A/B-5.PCB	SHT 1 of 1	