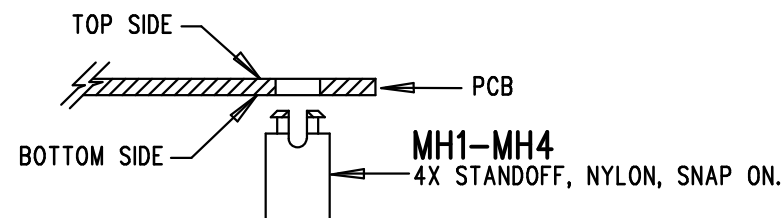


REVISION HISTORY				
ECO	REV	DESCRIPTION	APP. ENG.	DATE
-	2	PRODUCTION	MIKE S.	01-31-11

NOTES: UNLESS OTHERWISE SPECIFIED

1. WORKMANSHIP SHALL BE IN ACCORDANCE WITH IPC-A-610.
2. ASSEMBLY PROCESS SHALL INCLUDE: REFLOW SOLDER TOP SIDE SMD. MAXIMUM SOLDER TEMPERATURE IS 240 DEG CELSIUS.
3. PARTS TO OMIT WILL BE SPECIFIED ON THE BILL OF MATERIALS. LOCATIONS OF OMITTED PARTS SHALL BE FREE OF SOLDER. MASK THE SOLDER STENCIL WHERE SMT PARTS ARE OMITTED.
4. INSTALL SHUNTS AS SHOWN ON ASSY DRAWING.
5. DEPANELIZE BOARDS AFTER ASSEMBLY AND ROUTE-OUT THE BREAKOUT TABS ON FOUR SIDES OF THE BOARD EDGE.
6. DO NOT APPLY ANY KIND OF ASSEMBLY STAMP OR QA STAMP TO ANY BOARD.
7. INSTALL 4 STANDOFFS AT 4 LOCATIONS AS SHOWN BELOW:



8. THERE ARE 2 ASSEMBLY VERSIONS ON THIS DESIGN: -A & -B. SEE BILL OF MATERIALS TO WRITE APPROPRIATE VERSION IN THE WHITE BLOCK AREA BY BLACK PERMANENT MARKER.

APPROVALS

PCB DES. KT

APP ENG. MIKE S.

LINEAR TECHNOLOGY

1630 MCCARTHY BLVD
 MILPITAS, CA 95035
 PH: (408)432-1900
 www.linear.com
 LTC CONFIDENTIAL-
 FOR CUSTOMER USE ONLY

TITLE: TOP ASSEMBLY DRAWING

WIDE INPUT RANGE, HIGH EFFICIENCY
 STEP-DOWN DC-DC CONVERTER

SIZE N/A IC NO. LTC3833EFE

REV. 2

DEMO CIRCUIT 1516A

SCALE = NONE

FILENAME: DC1516A-2.PCB

SHT 1 OF 2