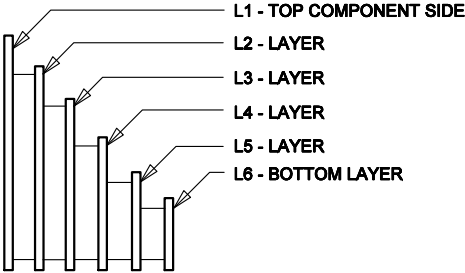


LTC CONFIDENTIAL - For Customer Use Only

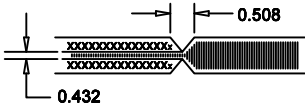
|                  |     |             |       |          |          |
|------------------|-----|-------------|-------|----------|----------|
| DWG NO. DC2190A  |     | SH 1        | REV 3 | 2        | 1        |
| REVISION HISTORY |     |             |       |          |          |
| ECO              | REV | DESCRIPTION |       | DATE     | APPROVED |
|                  | 3   | PROD        |       | 11/22/15 | GA SZ    |

LAYER CONSTRUCTION



NOTES: UNLESS OTHERWISE SPECIFIED,

- ARTWORK P/N DC2348A REV 3.
- FAB PER IPC-A-600
- PCB SHALL MEET RoHS COMPLIANCE.
- MATERIAL:
  - LAMINATE: EPOXY FIBERGLASS, NEMA GRADE FR-4  
FLAMMABILITY RATING: 94 V-2 MINIMUM .
  - THICKNESS: 1.6 +/- 0.1 mm
  - CLAD: 2 OZ. (50um) EXTERNAL LAYERS.  
1 OZ. (25um) COPPER ON THE INTERNAL LAYERS.
- FINISH:
  - COATING: SOLDERMASK OVER BARE COPPER,  
COLOR, GREEN LPI.
  - PLATING: GOLD IMMERSION BOTH SIDES.
  - SILKSCREEN: BOTH SIDES WITH WHITE  
NON-CONDUCTIVE INK.
- TOLERANCES:
  - WARPAGE: (0.75mm) MAX. ALONG THE LONGEST  
DIAG. AS PER IPC-TM650 METHOD 2.4.22.
  - ETCHING: +0.03mm, -0.3mm OF MASTER PATTERN.
  - REGISTRATION: 0.075mm MAX.
  - MASK THICKNESS: 0.015mm MIN., 0.075mm MAX.
  - HOLE PLATING: 22um +/- 3um.
- SIZE:
  - CUT TO DIMENSIONS AND TOLERANCES SHOWN.  
0.00 ARE PRIMARY DATUMS.
- HOLE DIAMETERS ARE POST-PLATED SIZES.
- DEBURR AND BREAK ALL SHARP EDGES.
- DO NOT ALTER ARTWORK e.g. TO ADD LOGO OR  
DATE CODE.
- SCORING:

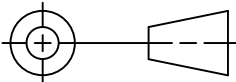


| SIZE | QTY | SYM | PLATED | TOL     |
|------|-----|-----|--------|---------|
| 0.25 | 964 | +   | YES    | +/-0.08 |
| 0.9  | 37  | X   | YES    | +/-0.08 |
| 1.8  | 2   | □   | NO     | +/-0.13 |
| 2.42 | 16  | ◇   | YES    | +/-0.13 |
| 4.75 | 4   | ⊗   | NO     | +/-0.13 |
| 4.96 | 8   | ⊗   | YES    | +/-0.13 |

UNLESS OTHERWISE SPECIFIED  
DIMENSIONS ARE IN MILLIMETERS  
TOLERANCES ON ANGLE ± 1°

.XX ± 0.25  
XXX ± 0.127

THIRD ANGLE PROJECTION



DO NOT SCALE DRAWING

CONTRACT NO

APPROVALS

DATE

DRAWN

11/06/14

CHECKED

APPROVED

ENGINEER

10/22/15



1630 McCarthy Blvd.  
Milpitas, CA 95035  
Phone: (408)432-1900  
Fax: (408)434-0507

TITLE

FAB, LTC3871LQFP, HIGH POWER BI-DIRECTIONAL  
SUPPLY/CHARGER

SIZE  
B

CAGE CODE

DWG NO

DEMO CIRCUIT 2348A

REV  
3

SCALE 1/1

FILENAME: 2348a-3.PCB

SHEET 1 OF 1