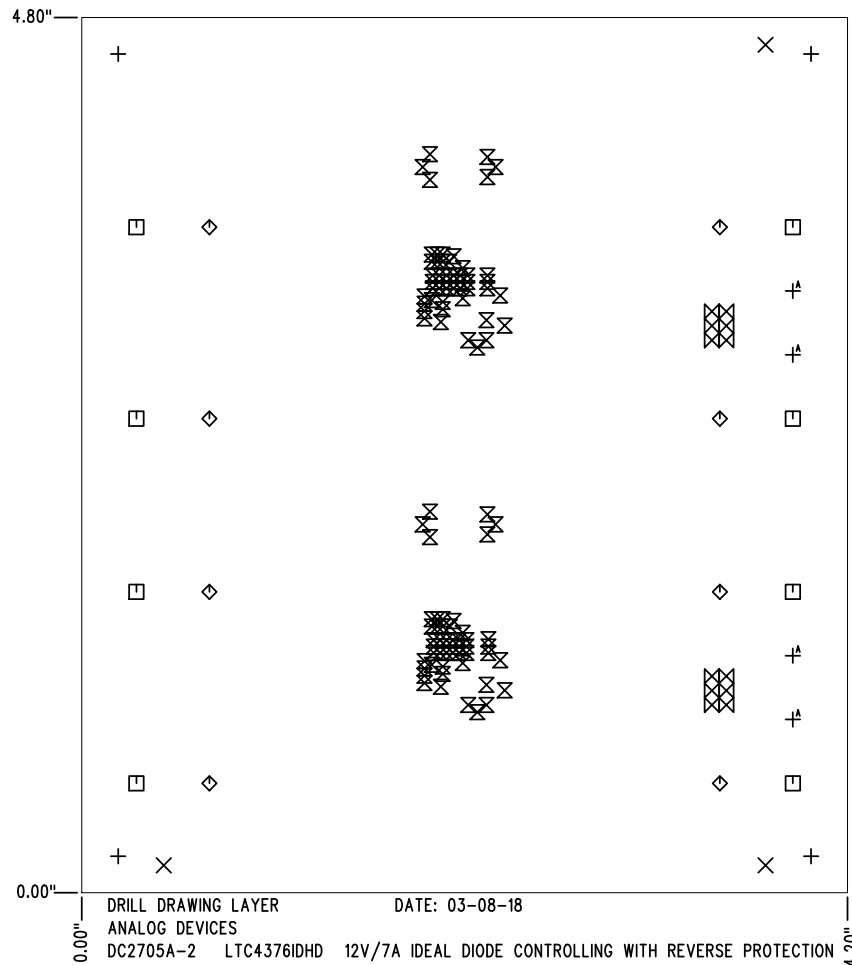


SHOWN FROM TOP SIDE

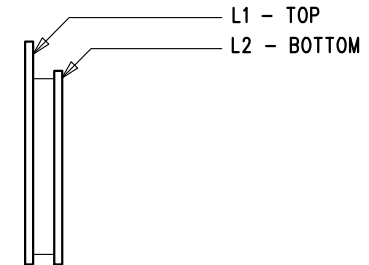


SIZE	QTY	SYM	PLATED	TOL
0.187	4	+	NO	+/-0.003"
0.07	3	X	NO	+/-0.003"
0.094	8	□	YES	+/-0.003"
0.207	8	◇	YES	+/-0.003"
0.012	102	⊗	YES	+/-0.003"
0.035	12	⊗	YES	+/-0.003"
0.063	4	⊕	YES	+/-0.003"

REVISION HISTORY

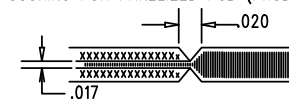
ECO	REV	DESCRIPTION	APP. ENG.	DATE
-	2	PRODUCTION	SAL H.	03-08-18



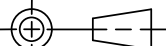
LAYER STRUCTURE



NOTES: UNLESS OTHERWISE SPECIFIED

- FAB PER IPC-A-600.
- MATERIAL: -LEAD FREE ASSEMBLY COMPLIANT, ISOLA FR-370HR
-FINISHED THICKNESS TO BE 0.062" +/- .005"
-TOTAL OF 2 LAYERS WITH 2 OZ. CU ON EACH.
-FLAMMABILITY RATING: 94 V-0 MINIMUM.
- SIZE: CUT TO DIMENSIONS AND TOLERANCES SHOWN.
0.00" ARE PRIMARY DATUMS.
- DRILLING: -DRILL HOLES PER SCHEDULE. PLATE THROUGH HOLES WITH COPPER, 0.001" THICK MIN.
-ALL HOLE SIZES ARE SPECIFIED AFTER PLATING.
-HOLE LOCATION TOLERANCES ARE +/-0.003" IN RELATION TO CENTER
- FINISH: -SMOBC USING LPI BOTH SIDES, COLOR GREEN.
-GOLD IMMERSION BOTH SIDES.
-FOR SILKSCREENS: USE WHITE NON-CONDUCTIVE INK.
- DO NOT ALTER ARTWORK e.g. TO ADD LOGO OR DATE CODE.
PAD SIZE CAN BE MODIFIED TO MEET END FINISH.
- PCBS ARE TO BE RoHS COMPLIANT.
- SCORING FOR PANELIZED PCB (PRODUCTION FAB ONLY):



UNLESS OTHERWISE SPECIFIED		APPROVALS		 ANALOG DEVICES		 POWER BY LINEAR		1630 MCCARTHY BLVD. MILPITAS, CA 95035 TEL: (408)432-1900	
DIMENSIONS ARE IN INCHES TOLERANCES: 0.XX" = ±0.01" 0.XXX" = ±0.005" INTERPRET DIM AND TOL PER ASME Y14.5M-1994 THIRD ANGLE PROJECTION 		PCB DES.	KIM T.	www.analog.com		www.linear.com			
		APP ENG.	SAL H.	TITLE: FABRICATION DRAWING 12V/7A IDEAL DIODE CONTROLLING WITH REVERSE PROTECTION					
		SCALE = NONE		SIZE		IC NO.		LTC4376IDHD	
				N/A				DEMO CIRCUIT 2705A	
								REV 2	
				FILENAME:		DC2705A-2.PCB		SHT 1 OF 1	