

1. ARTWORK P/N DC1638A.
2. FAB PER IPC-A-600
3. MATERIAL: NELCO N4000-13 FINISHED THICKNESS TO BE .062 +/- .005 INCH WITH 2 OZ. COPPER ON TWO OUTER LAYERS AND 1 OZ. COPPER ON TWO INTERNAL LAYERS. FLAMMABILITY RATING: 94 V-0 MINIMUM.

4. SIZE: CUT TO DIMENSIONS AND TOLERANCES ± 0.003 .
0.00" ARE PRIMARY DATUMS.

5. BOARD: SELECTIVE PLATED BOARD. SOLDER MASK OVER BARE COPPER.

IMMERSION GOLD SOLDER PLATING BOTH SIDES;
SOLDER MASK TYPE: WET PHOTO-IMAGEABLE
THE PCB COLOR: GREEN
SILKSCREEN BOTH SIDES WITH WHITE NON-
CONDUCTIVE INK.

PLATE THRU ALL HOLES WITH COPPER
MIN. PLATING THICKNESS: 1 OZ. EXCEPT
WHERE PLATING NOT REQUIRED

6. DRILL: ALL HOLES SHALL BE DRILLED $\pm .003$ INCH WITH RESPECT TO CTR. OF DRILLED PAD.
ALL HOLES FINISHED SIZE AFTER PLATING.

7. DROP ALL UNUSED PADS ON INNER LAYERS.
8. DO NOT ALTER ARTWORK TO ADD LOGO OR DATE CODE.
BUT YOU MAY MODIFY PAD SIZE TO MEET END FINISH.

9. OUTER DIELECTRIC THICKNESS: TARGET 50- Ω M USING 30 MIL TRACE. CONTROLLED 50 Ω M IMPEDANCE (AT 2.0GHz FREQ.)
TOL: \pm 5% FOR MICROSTRIP LINE ON LAYER 1.

10. 15 MILLS THICKNESS REFLECTS DIELECTRIC CONSTANT OF 3.7.
SUBJECT FOR ADJUSTMENT BY MANUFACTURER.

1. INNER AND OUTER LAYER COPPER SHALL BE EXPOSED IN THREE INSET AREAS ALONG BOARD EDGES.
DO NOT MODIFY INNER LAYER COPPER BACKOFF OUTLINE.

2. PCBs ARE TO BE RoHS COMPLIANT.

13. TOLERANCES:

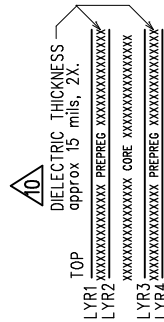
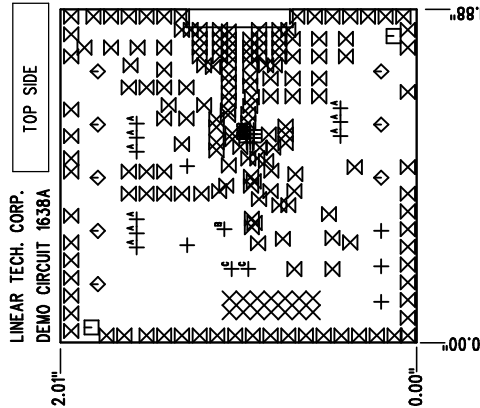
A. WARPAGE: (0.003") MAX. ALONG THE LONGEST DIAG.
AS PER IPC-TM650 METHOD 2.4.22.

B. ETCHING: +0.001", -0.01" OF MASTER PATTERN.

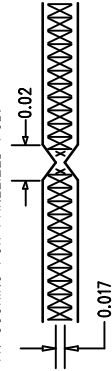
C. REGISTRATION: 0.003" MAX.

D. MASK THICKNESS: 0.001" MIN., 0.003" MAX.



E. HOLE PLATING: 0.001" +/- 10%.



14. SCORING FOR PANELIZED PCB:



SIZE	QTY	SYM	PLATED	TOL
0.07	2	□	NO	+/-0.003
0.095	8	◇	YES	+/-0.003
0.01	176	⊠	YES	+/-0.003
0.035	9	⊢ ^A	YES	+/-0.003
0.065	5	+	YES	+/-0.003
0.035 ^{A3}	14	×	YES	+/-0.003
0.008	13	⊢ ^B	YES	+/-0.003
0.036	2	⊢ ^C	YES	+/-0.003

<div>UNLESS OTHERWISE SPECIFIED</div> <div>DIMENSIONS ARE IN INCHES</div> <div>TOLERANCES:</div> <div>0.XX" = ±0.01"</div> <div>0.XXX" = ±0.0005"</div> <div>INTERPRET DIM AND TOL</div> <div>PER ASME Y14.5M-1994</div> <div>THIRD ANGLE PROJECTION</div> <div></div>	APPROVALS		<div></div> <div>LINEAR TECHNOLOGY</div> <div>N30 MCCARTHY BLVD P.O. BOX 1000 PH: (408) 432-1000 www.linear.com LTC CONFIDENTIAL - FOR CUSTOMER USE ONLY</div>
	PCB DES.	HZ	
	APP ENG.	ANDY M.	
TITLE: FABRICATION DRAWING			
6GHZ RMS POWER DETECTOR WITH INTEGRATED 12-BIT SERIAL ADC			
	SIZE IC NO.	LTC5587IDD	REV
	N/A	DEMO CIRCUIT 1638A	3
SCALE = NONE		FILENAME: DC1638A-3.PCB	SHT 1 OF 1