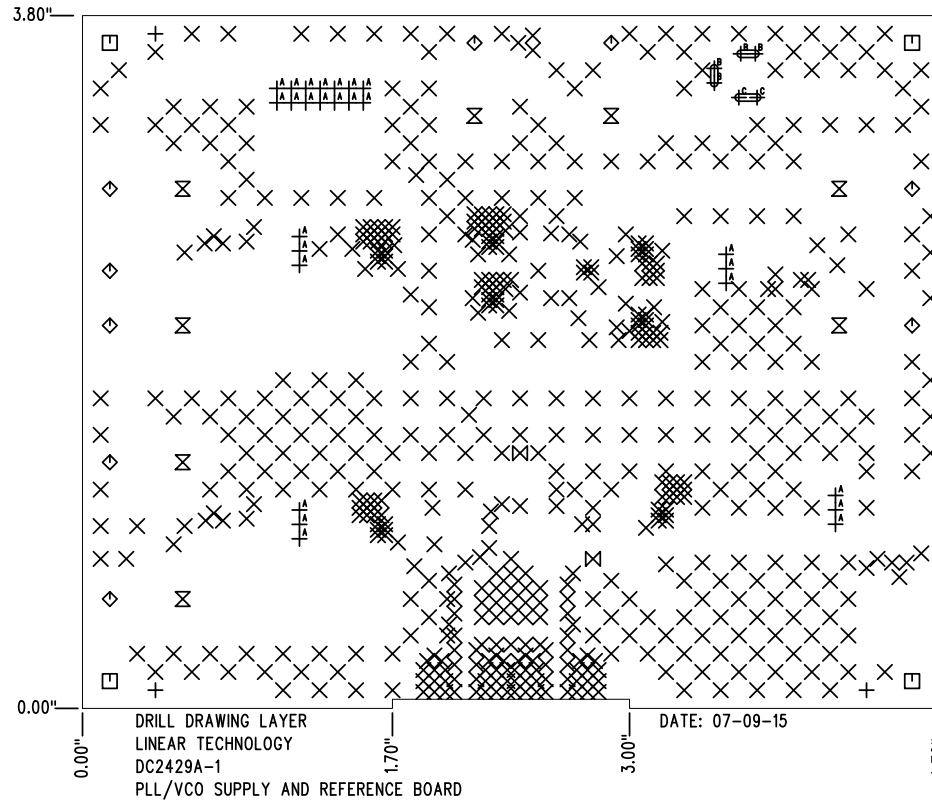


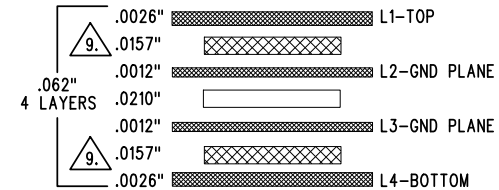
SHOWN FROM TOP SIDE

REVISION HISTORY

ECO	REV	DESCRIPTION	APP. ENG.	DATE
-	1	1ST PROTOTYPE	CHRIS P.	07-09-15

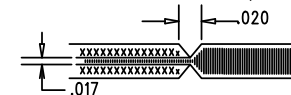


LAYER STRUCTURE



NOTES: UNLESS OTHERWISE SPECIFIED

- FAB PER IPC-A-600.
- MATERIAL: -LEAD FREE ASSEMBLY COMPLIANT, ISOLA FR-370HR OR EQUIVALENT.
-FINISHED THICKNESS TO BE 0.062" +/- .005"
-TOTAL OF 4 LAYERS WITH 2 OZ. CU ON THE OUTER LAYERS AND 1 OZ. CU ON THE INNER LAYERS.
-FLAMMABILITY RATING: 94 V-0 MINIMUM.
- SIZE: CUT TO DIMENSIONS AND TOLERANCES SHOWN.
0.00" ARE PRIMARY DATUMS.
- DRILLING: -DRILL HOLES PER SCHEDULE. PLATE THROUGH HOLES WITH COPPER, 0.001" THICK MIN.
-ALL HOLE SIZES ARE SPECIFIED AFTER PLATING.
-HOLE LOCATION TOLERANCES ARE +/-0.003" IN RELATION TO CENTER
- FINISH: -SMOBC USING LPI BOTH SIDES, COLOR GREEN.
-GOLD IMMERSION BOTH SIDES.
-FOR SILKSCREENS: USE WHITE NON-CONDUCTIVE INK.
- DO NOT ALTER ARTWORK e.g. TO ADD LOGO OR DATE CODE.
PAD SIZE CAN BE MODIFIED TO MEET END FINISH.
- PCBS ARE TO BE RoHS COMPLIANT.
- SCORING FOR PANELIZED PCB (PRODUCTION FAB ONLY):



9. SUBJECT TO CHANGE BY MANUFACTURER, DEPENDING ON DIELECTRIC CONSTANT DEVIATIONS. PLEASE CONSULT LTC.

SIZE	QTY	SYM	PLATED	TOL
0.07	3	+	NO	+/-0.003"
0.012	620	X	YES	+/-0.003"
0.187	4	□	NO	+/-0.003"
0.063	9	◇	YES	+/-0.003"
0.207	8	⊗	YES	+/-0.003"
0.025	2	⊗	YES	+/-0.003"
0.035	26	⊕ ^A	YES	+/-0.003"
0.04 x 0.12	2	⊕ ^B	YES	+/-0.003"
0.04 x 0.14	1	⊕ ^C	YES	+/-0.003"

UNLESS OTHERWISE SPECIFIED		APPROVALS		<p>1630 MCCARTHY BLVD MILPITAS, CA 95035 PH: (408)432-1900 www.linear.com LTC CONFIDENTIAL- FOR CUSTOMER USE ONLY</p>	
DIMENSIONS ARE IN INCHES TOLERANCES: 0.XX" = ±0.01" 0.XXX" = ±0.005" INTERPRET DIM AND TOL PER ASME Y14.5M-1994 THIRD ANGLE PROJECTION		PCB DES.	KIM T.		
		APP ENG.	CHRIS P.	TITLE: FABRICATION DRAWING	
				PLL/VCO SUPPLY AND REFERENCE BOARD	
				SIZE N/A	IC NO. DEMO CIRCUIT 2429A
				SCALE = NONE	REV 1
				FILENAME: DC2429A-1.PCB	SHT 1 OF 1