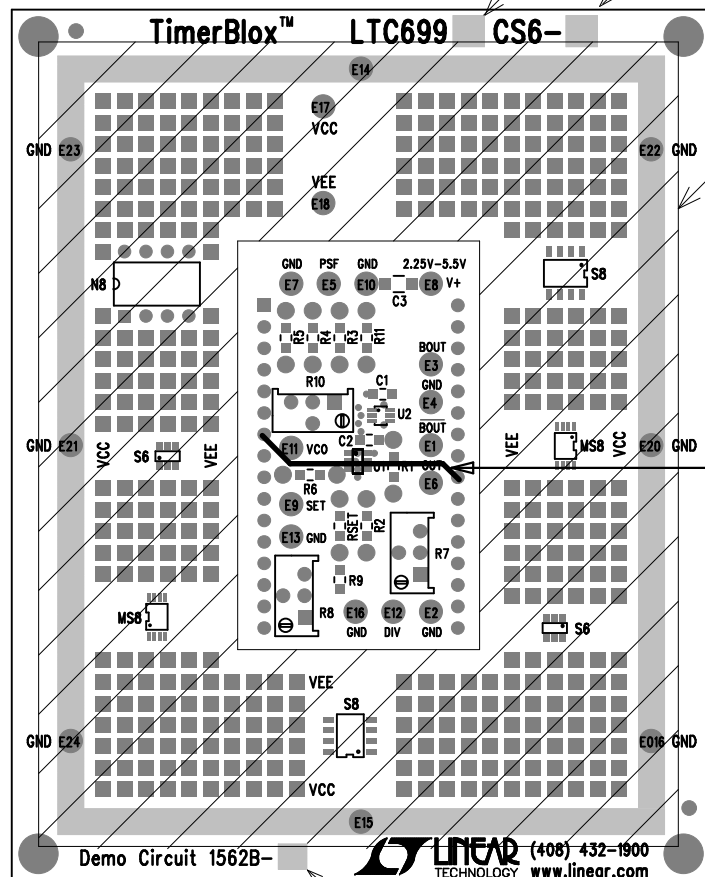


REVISION HISTORY				
ECO	REV	DESCRIPTION	APP. ENG.	DATE
-	1	PRODUCTION	JIM M.	05-06-13



TOP SILKSCREEN

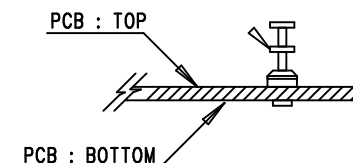
LINEAR TECHNOLOGY  
DC1562B-1-LTC699X  
TimerBlox™  
DATE: 05-06-13

VERSION TABLE

ASSY TYPE	U1
DC1562B-A	LTC6990CS6
DC1562B-B	LTC6991CS6
DC1562B-C	LTC6992CS6-1
DC1562B-D	LTC6992CS6-2
DC1562B-E	LTC6992CS6-3
DC1562B-F	LTC6992CS6-4
DC1562B-G	LTC6993CS6-1
DC1562B-H	LTC6993CS6-2
DC1562B-I	LTC6993CS6-3
DC1562B-J	LTC6993CS6-4
DC1562B-K	LTC6994CS6-1
DC1562B-L	LTC6994CS6-2
DC1562B-M	LTC6995CS6-1
DC1562B-N	LTC6995CS6-2

M, N VERSIONS


TURRETS : MILL-MAX 2308-2



AS SHOWN  
FOR VERSIONS M and N PUT WIRE JUMPER

## NOTES: UNLESS OTHERWISE SPECIFIED

1. WORKMANSHIP SHALL BE IN ACCORDANCE WITH IPC-A-610.
2. ASSEMBLY PROCESS SHALL INCLUDE: REFLOW SOLDER TOP SIDE SMD. MAXIMUM SOLDER TEMPERATURE IS 240 DEGREES CELSIUS.
3. PARTS TO OMIT WILL BE SPECIFIED ON THE BILL OF MATERIALS. LOCATIONS OF OMITTED PARTS SHALL BE FREE OF SOLDER. MASK THE SOLDER STENCIL WHERE SMT PARTS ARE OMITTED.
4. DEPANELIZE BOARDS AFTER ASSEMBLY AND ROUTE-OUT THE BREAKOUT TABS ON FOUR SIDES OF THE BOARD EDGE.
5. DO NOT APPLY ANY KIND OF ASSEMBLY STAMP OR QA STAMP
6. FILL IN TEXT PER VERSION TABLE AS SHOWN.
7. SHADED AREA SHOULD BE FREE OF SOLDER. MARK SHADED AREA BEFORE WAVE SOLDER(TOP & BOTTOM).

APPROVALS		 1630 MCCARTHY BLVD MILPITAS, CA 95035 PH: (408) 432-1900 www.linear.com LTC CONFIDENTIAL- FOR CUSTOMER USE ONLY		
PCB DES.	AK	TITLE: TOP ASSEMBLY DRAWING  TimerBlox™		
APP ENG.	JIM M.			
		SIZE	IC NO.	REV.
		N/A	LTC699X DEMO CIRCUIT 1562B	1
SCALE = NONE		FILENAME: 1562B-1.PCB		SHT 1 OF 1