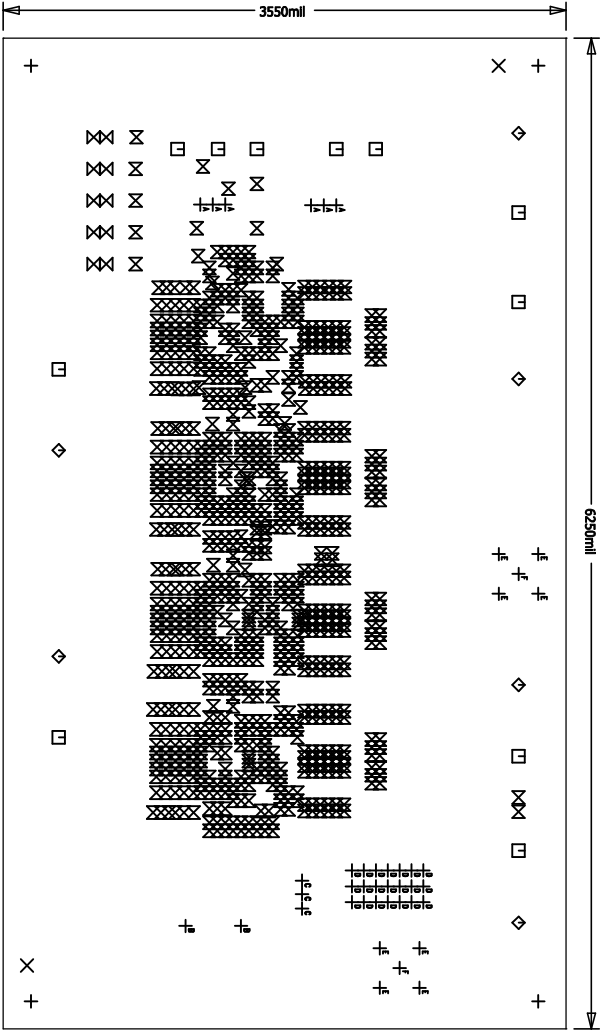
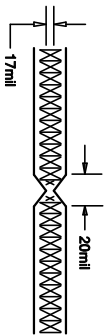


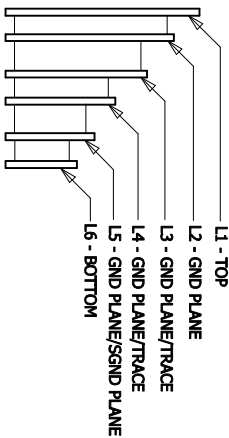
REVISION HISTORY			
ECO	REV	DESCRIPTION	APPR DATE
—	2	PRODUCTION	JEFF Z. 09-01-11

NOTES: UNLESS OTHERWISE SPECIFIED

1. FAB PER IPC-A-600.
2. MATERIAL: LEAD FREE ASSEMBLY COMPLIANT, ISOLA FR-370HR OR EQUIVALENT.
2 OZ. COPPER FINISH ON EXTERNAL LAYER.
1 OZ. COPPER FINISH ON INTERNAL LAYERS.
THICKNESS .080 +/- .005 TOTAL OF 8 LAYERS.
FLAMMABILITY RATING: 94 V-0 MINIMUM.
0.00 ARE PRIMARY DATUMS.
3. SIZE: DIMENSIONS SHOWN AND TOLERANCES +/-0.010
0.00 ARE PRIMARY DATUMS.
4. DRILLING: DRILL HOLES PER SCHEDULE. PLATE THROUGH HOLES WITH COPPER. .001 INCH THICK MIN. ALL HOLE SIZES ARE SPECIFIED AFTER PLATING.
HOLE LOCATION TOLERANCES ARE +/-3MIL
INCH IN RELATION TO CENTER
5. FINISH: SMOBC USING LPI BOTH SIDES COLOR GREEN.
GOLD IMMERSION BOTH SIDES.
6. SILKSCREEN : USING WHITE NON-CONDUCTIVE EPOXY INK.
7. DO NOT ALTER ARTWORK TO ADD LOGO OR DATE CODE BUT YOU MAY MODIFY PAD SIZE TO MEET END FINISH.
8. PCB's SHALL BE ROHS COMPLIANT.
9. SCORING: FOR PANELIZED FABRICATION ONLY
10. (U1,U2,U3,U4)DO NOT CHANGE ANY SIZE ON THESE COMPONENTS.



LAYER STRUCTURE



SIZE	QTY	SYM	PLATED	TOL
187	4	+	YES	+/-3MIL
70.87	2	X	NO	+/-3MIL
65	11	□	YES	+/-3MIL
189	6	◇	YES	+/-3MIL
34	10	⊗	YES	+/-3MIL
10	932	⊗	YES	+/-3MIL
31	6	+	YES	+/-3MIL
94	2	+	YES	+/-3MILs
30	3	+	YES	+/-3MIL
15	21	+	YES	+/-3MIL
52	8	+	YES	+/-3MIL
59	2	+	YES	+/-3MIL

APPROVALS		TITLE: TOP ASSEMBLY DRAWING	
PCB DES.	RB	HIGH EFFICIENCY, POLYPHASE, STEP-DOWN POWER MODULE	
APP ENG.	JEFF Z.	IC NO. LTM4620EV	
		SIZE	REV.
		N/A	2
		FILENAME: DGT780A-Rev2.PCB	SHT 1 OF 1

SCALE = NONE

LINEAR TECHNOLOGY
1800 INNOVATIVE BLVD
MILPITAS, CA 95035
PH: (408)435-1800
FAX: (408)435-1801
LTC COMPANY CODE: 1780A
FOR CUSTOMER USE ONLY