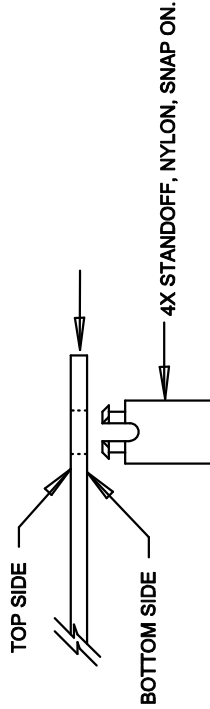



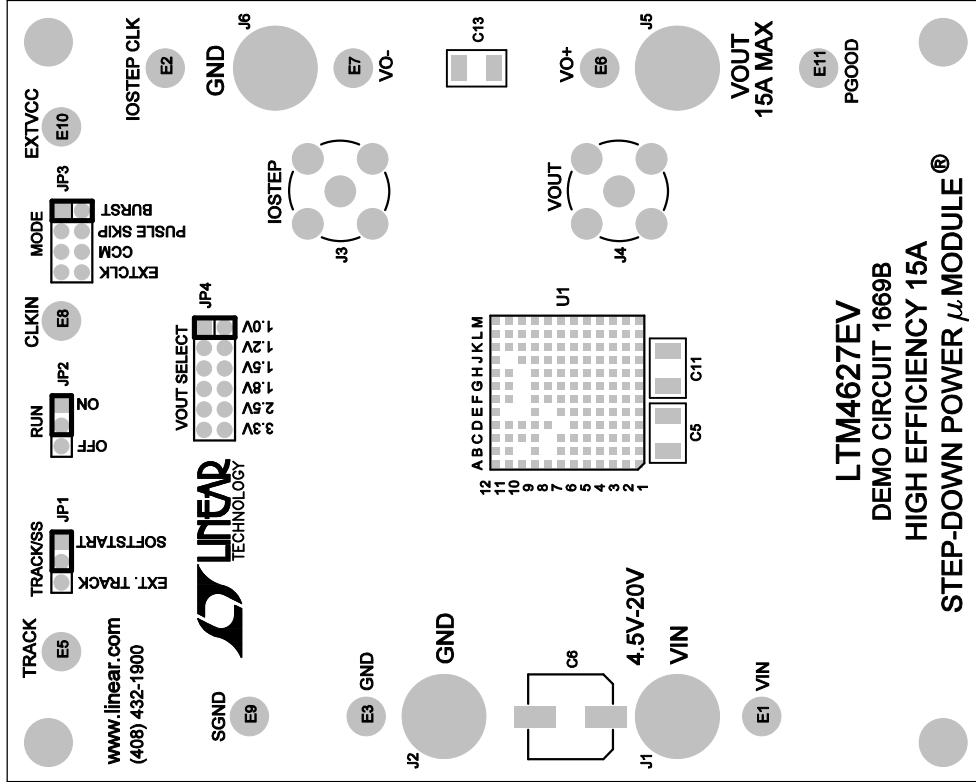
REVISION HISTORY			
ECO	REV	DESCRIPTION	APPROVAL
1	1	REBUILD WITH CHANGE	SAM Y.
			DATE
			08/11/10

NOTES: UNLESS OTHERWISE SPECIFIED,

1. WORKMANSHIP SHALL BE IN ACCORDANCE WITH IPC-A-610.
2. ASSEMBLY PROCESS SHALL INCLUDE: REFLOW SOLDER TOP SIDE SMD.
3. PARTS TO OMIT WILL BE SPECIFIED ON THE BILL OF MATERIALS.
LOCATIONS OF OMITTED PARTS SHALL BE FREE OF SOLDER.
MASK THE SOLDER STENCIL WHERE SMT PARTS ARE OMITTED.
4. INSTALL SHUNTS AS SHOWN ON ASSY DRAWING.
5. DEPANELIZE BOARDS AFTER ASSEMBLY AND ROUTE-OUT THE
BREAKOUT TABS ON FOUR SIDES OF THE BOARD EDGE.
6. DO NOT APPLY ANY KIND OF ASSEMBLY STAMP OR QA STAMP
TO ANY BOARD.
7. INSTALL 4 STANDOFFS AT 4 LOCATIONS AS SHOWN BELOW:



APPROVALS		 1630 MCCARTHY BLVD MILPITAS, CA 95035 PH: (408) 432-1900 www.linear.com LTC CONFIDENTIAL- FOR CUSTOMER USE ONLY	
		TITLE: TOP ASSEMBLY DRAWING, HIGH EFFICIENCY 15A STEP-DOWN POWER μ MODULE®	
PCB DES.	MI	SIZE	IC NO
APP. ENG.	SAM Y.	N/A	LTM4627EV
			REV
			1
SCALE: NONE		FILENAME: 1669B-1.PCB	
		SHT 1 of 2	



TOP SILKSREEN