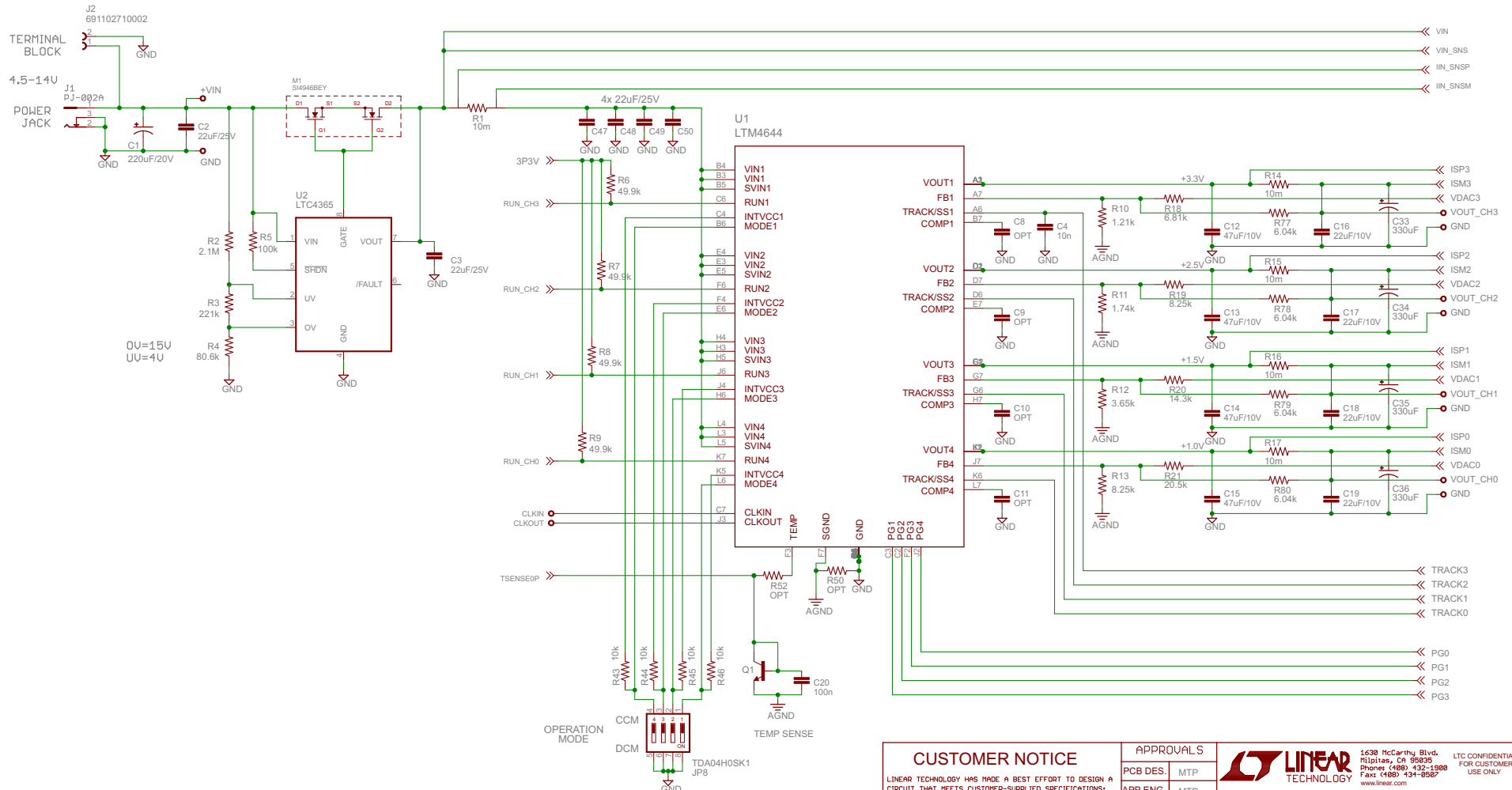


REVISION HISTORY				
ECO	REV	DESCRIPTION	APPROVED	DATE
-	1a	Production	M Peters	06-12-15

Input Protection (OV/UV/Reverse)

Quad 4A DC/DC Converter



CUSTOMER NOTICE

LINEAR TECHNOLOGY HAS MADE A BEST EFFORT TO DESIGN CIRCUIT THAT MEETS CUSTOMER-SUPPLIED SPECIFICATIONS; HOWEVER, IT REMAINS THE CUSTOMERS RESPONSIBILITY TO VERIFY PROPER AND RELIABLE OPERATION IN THE ACTUAL APPLICATION. COMPONENT SUBSTITUTION AND PRINTED CIRCUIT BOARD LAYOUT MAY SIGNIFICANTLY AFFECT CIRCUIT PERFORMANCE OR RELIABILITY. CONTACT LINEAR TECHNOLOGY APPLICATIONS ENGINEERING FOR ASSISTANCE

THIS CIRCUIT IS PROPRIETARY TO LINEAR TECHNOLOGY AND
SUPPLIED FOR USE WITH LINEAR TECHNOLOGY PARTS

APPROVALS

PCB DES.	MTP
----------	-----



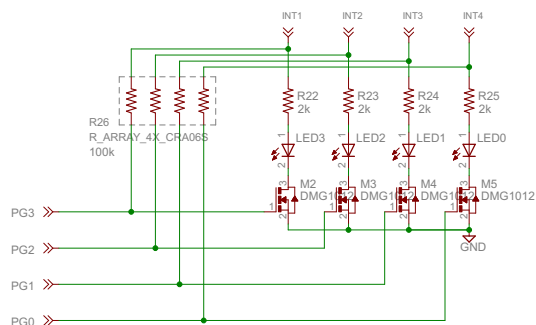
1630 McCarthy Blvd.
Milpitas, CA 95035
Phone: (408) 432-1900
Fax: (408) 434-0507
japan@linde.com

TITLE: LTM4644 Quad 4A Supply
with 50-pin Connector to Power System Manager

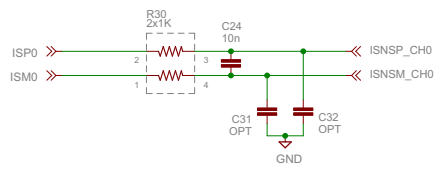
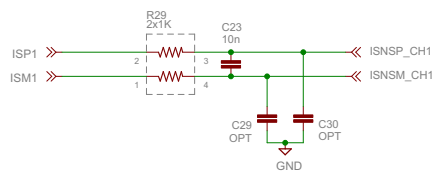
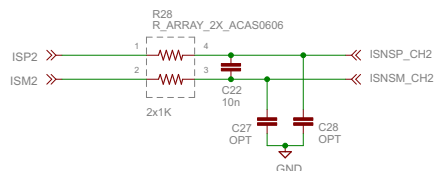
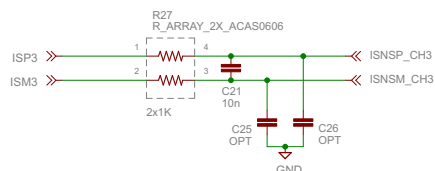
SIZE B	IC NO. LTM4644 Demo Circuit 2363A	REV: 1a
-----------	--------------------------------------	------------

DATE: 7/2/2015 2:57:19 PM SHEET: 1/3

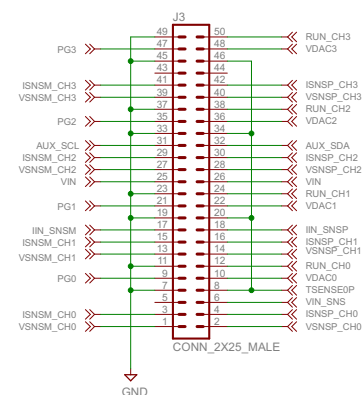
LED Indication



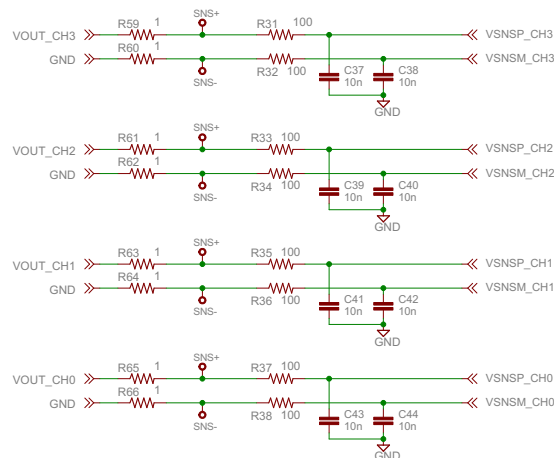
Current Sense Filtering



Board-to-Board Connector

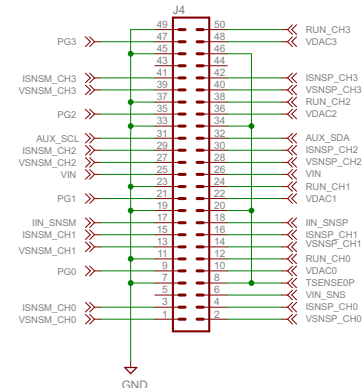


Voltage Sense Filtering



NOTE: REMOVE R59-R66 FOR REMOTE SENSING

Test Points/ Optional Header



CUSTOMER NOTICE

LINEAR TECHNOLOGY HAS MADE A BEST EFFORT TO DESIGN A CIRCUIT THAT MEETS CUSTOMER-SUPPLIED SPECIFICATIONS; HOWEVER, IT REMAINS THE CUSTOMER'S RESPONSIBILITY TO VERIFY PROPER AND RELIABLE OPERATION IN THE ACTUAL APPLICATION. COMPONENT SUBSTITUTION AND PRINTED CIRCUIT BOARD LAYOUT MAY SIGNIFICANTLY AFFECT CIRCUIT PERFORMANCE OR RELIABILITY. CONTACT LINEAR TECHNOLOGY APPLICATIONS ENGINEERING FOR ASSISTANCE.

THIS CIRCUIT IS PROPRIETARY TO LINEAR TECHNOLOGY AND SUPPLIED FOR USE WITH LINEAR TECHNOLOGY PARTS

APPROVALS

PCB DES. MTP

APP ENG. MTP



1330 McCarthy Blvd.
Milpitas, CA 95035
Phone (408) 432-1900
Fax (408) 434-9957
www.linear.com

LTC CONFIDENTIAL
FOR CUSTOMER
USE ONLY

TITLE: LTM4644 Quad 4A Supply
with 50-pin Connector to Power System Manager

SIZE B IC NO. LTM4644
Demo Circuit 2363A

REV: 1a

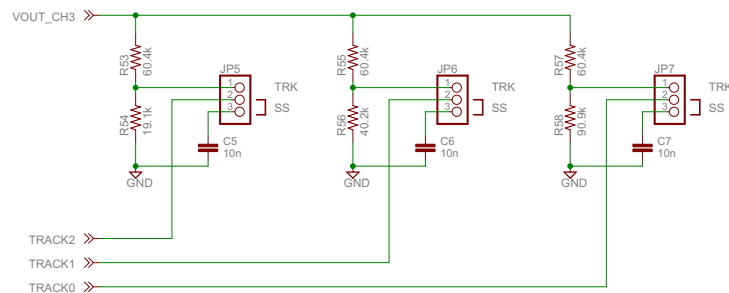
SCALE = NONE

DATE: 7/2/2015 2:57:19 PM

SHEET: 2/3

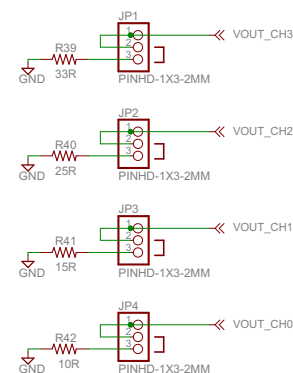
REVISION HISTORY				
ECO	REV	DESCRIPTION	APPROVED	DATE
-	1a	Production	M. Peters	05-12-15

Tracking/SoftStart Jumpers



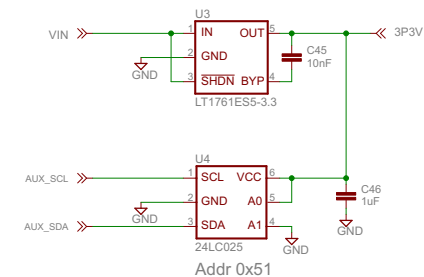
By default, jumpers set to SoftStart

Pre-Load Jumpers



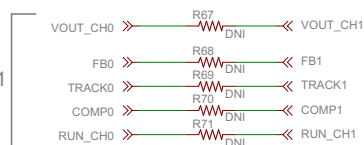
By default, jumpers set to pre-load ON

+3.3V LDO and Identity EEPROM

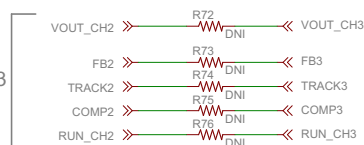


Optional Jumpers for Parallel Operation

Parallel CH0 and CH1



Parallel CH2 and CH3



R67 thru R76 are 0 ohm

CUSTOMER NOTICE

LINEAR TECHNOLOGY HAS MADE A BEST EFFORT TO DESIGN A CIRCUIT THAT MEETS CUSTOMER-SUPPLIED SPECIFICATIONS; HOWEVER, IT REMAINS THE CUSTOMER'S RESPONSIBILITY TO VERIFY PROPER AND RELIABLE OPERATION IN THE ACTUAL APPLICATION. COMPONENT SUBSTITUTION AND PRINTED CIRCUIT BOARD LAYOUT MAY SIGNIFICANTLY AFFECT CIRCUIT PERFORMANCE OR RELIABILITY. CONTACT LINEAR TECHNOLOGY APPLICATIONS ENGINEERING FOR ASSISTANCE.

THIS CIRCUIT IS PROPRIETARY TO LINEAR TECHNOLOGY AND SUPPLIED FOR USE WITH LINEAR TECHNOLOGY PARTS

APPROVALS

PCB DES. MTP

APP ENG. MTP



1530 McCarthy Blvd.
Folsom, CA 95630
Phone (408) 432-1900
Fax (408) 434-9957
www.linear.com

LTC CONFIDENTIAL
FOR CUSTOMER
USE ONLY

TITLE: LTM4644 Quad 4A Supply
with 50-pin Connector to Power System Manager

SIZE B IC NO. LTM4644
Demo Circuit 2363A

REV: 1a

SCALE = NONE

DATE: 7/2/2015 2:57:19 PM

SHEET: 3/3