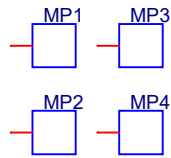


PCA ADDITIONAL PARTS

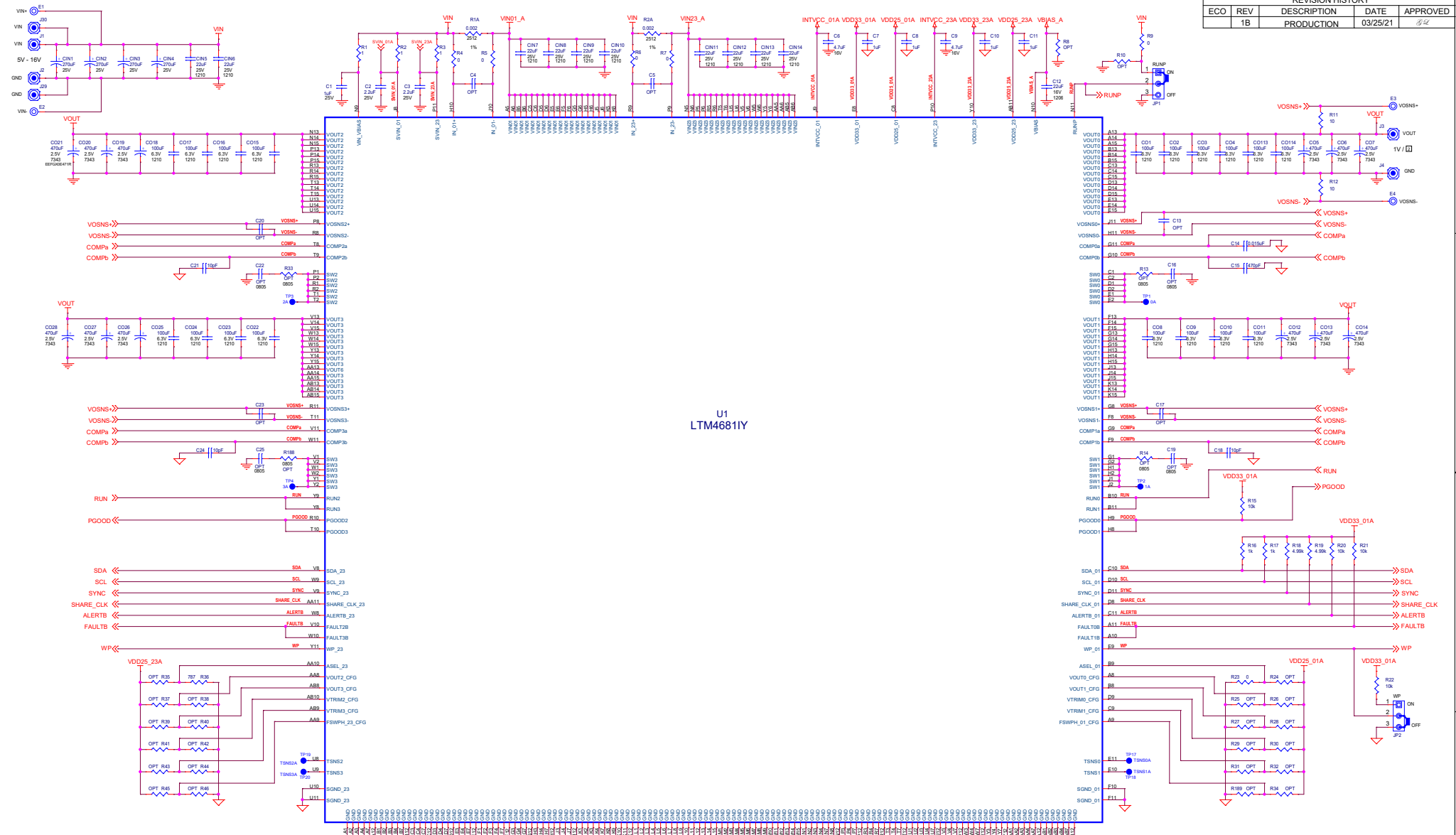
LB1	LABEL SPEC, DEMO BOARD SERIAL NUMBER
STNCL1	TOOL, STENCIL, DC3082A REV01



Blank PCB

Oracle Part Number	Oracle Description	BLANK_PCB_ATE, 04/18/2018
600-DC3082A		
600-DC3082A DUPLICATE ORACLE PART NUMBER	ADI APPROVED SUPPLIER DO NOT CHANGE; SHOULD SAY "ADI Test Engineering"	

REVISION HISTORY				
ECO	REV	DESCRIPTION	DATE	APPROVED
	1B	PRODUCTION	03/25/21	<i>[Signature]</i>



NOTE: UNLESS OTHERWISE SPECIFIED, ALL RESISTORS AND CAPACITORS ARE 0805

VERSION	NUMBER OF LTM4681 USED	MAX OUTPUT CURRENT	DEFAULT VOUT	DEFAULT FSW	C14	C15	NOTE FOR ASSEMBLY
-A	2x LTM4681: U1, U2	240A	1V	350kHz	10nF	330pF	All components listed on page 3 and page 4 of the schematic are option and not stocked for -A version
-B	3x LTM4681: U1, U2, U3	360A	1V	350kHz	12nF	470pF	All components listed on page 4 of the schematic are option and not stocked for -B version
-C	4x LTM4681: U1, U2, U3, U4	480A	1V	350kHz	15nF	470pF	

CUSTOMER NOTICE
 ANALOG DEVICES HAS MADE A BEST EFFORT TO DESIGN A CIRCUIT THAT MEETS CUSTOMER REQUIREMENTS. HOWEVER, IT REMAINS THE CUSTOMER'S RESPONSIBILITY TO VERIFY PROPER AND RELIABLE OPERATION IN THE ACTUAL APPLICATION. COMPONENT SUBSTITUTION AND PRINTED CIRCUIT BOARD LAYOUT MAY SIGNIFICANTLY AFFECT CIRCUIT PERFORMANCE OR RELIABILITY. CONTACT ANALOG DEVICES APPLICATION ENGINEERS FOR ASSISTANCE.
 THIS CIRCUIT IS PROPRIETARY TO ANALOG DEVICES AND SUPPLIED FOR USE WITH ANALOG DEVICES POWER.

APPROVALS	
PCB DES.	<i>[Signature]</i>
APP ENG.	<i>[Signature]</i>

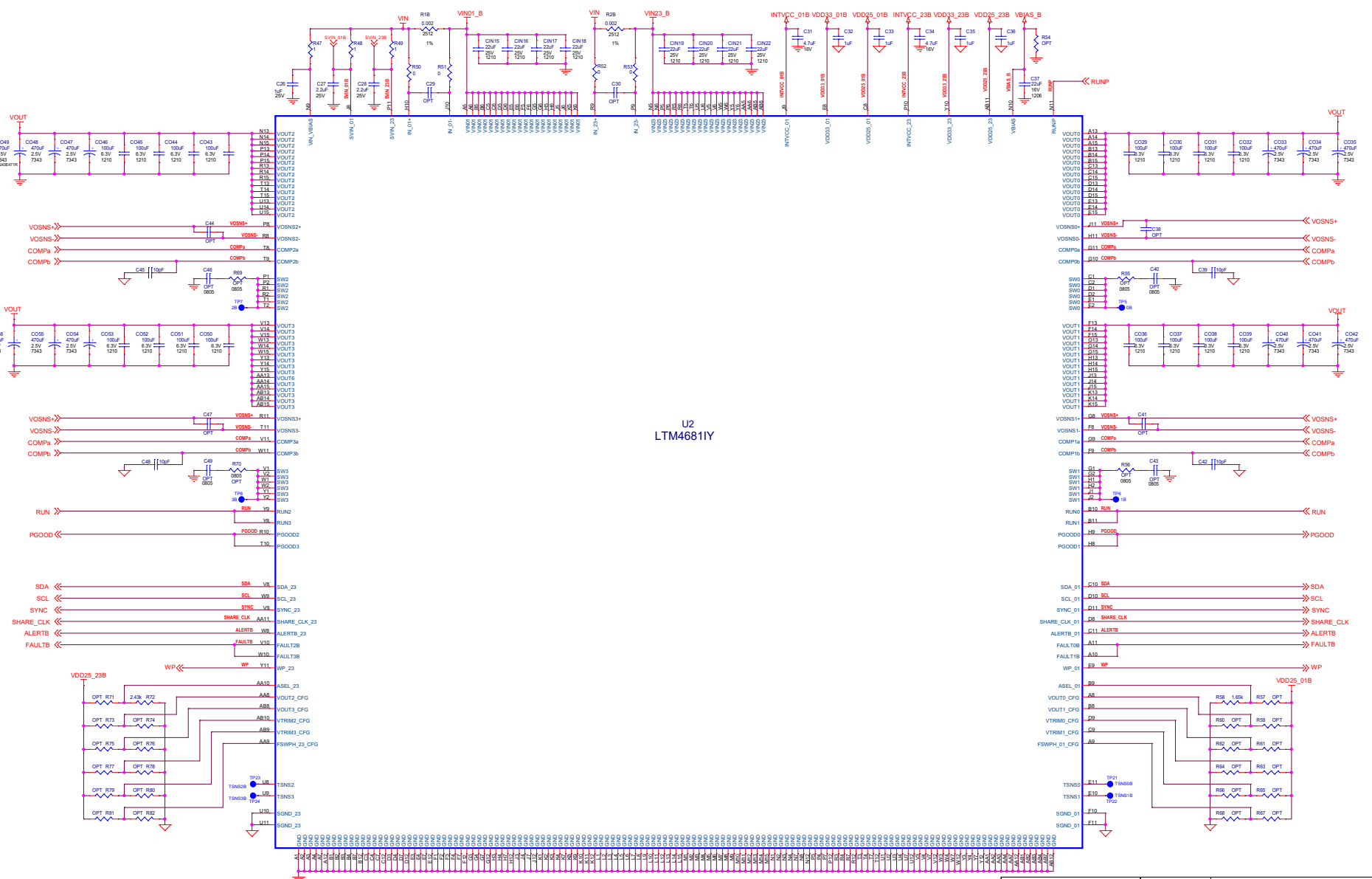
ANALOG DEVICES POWER BY LINEAR
 www.analog.com Phone: (408)432-1900

TITLE: SCHEMATIC
 POLYPHASE SINGLE OUTPUT DC/DC PSM
 MODULE REGULATOR

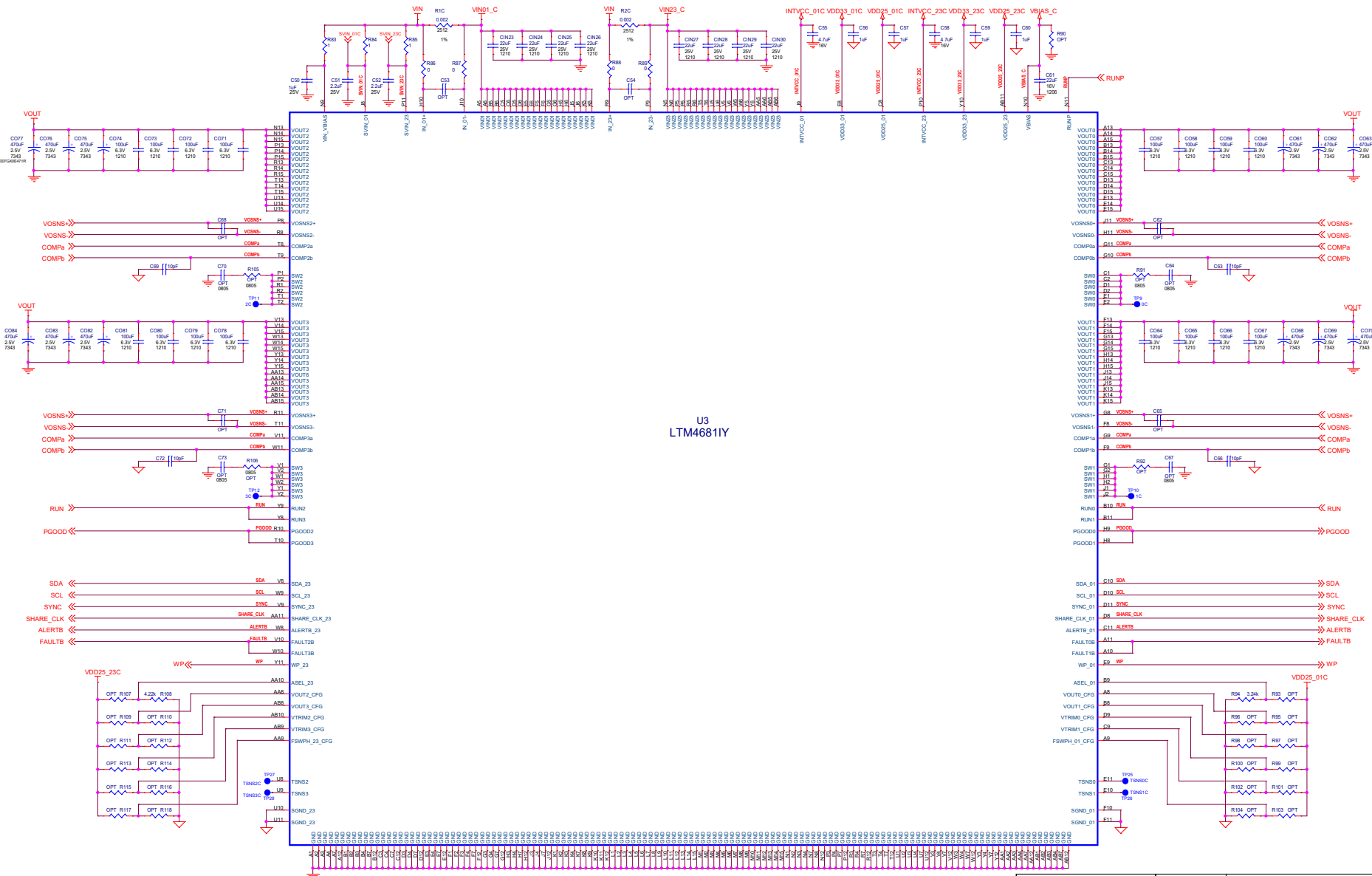
IC NO. LTM4681Y
 SKU NO. DC3082A-C

SCHEMATIC NO. AND REVISION:
 710-DC3082A-C_REV01B

SIZE: N/A DATE: Friday, March 26, 2021 SHEET 1 OF 5

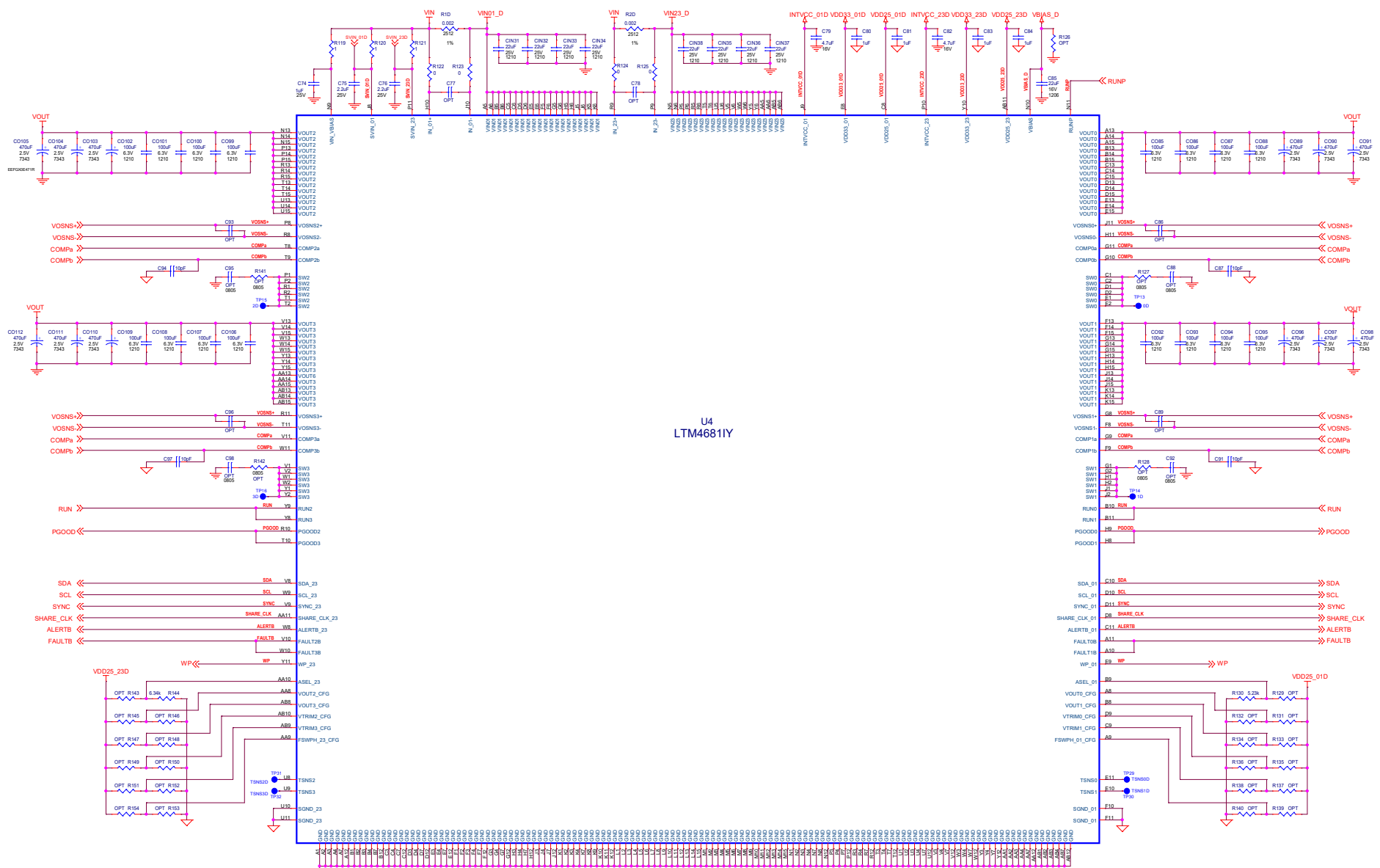


CUSTOMER NOTICE		APPROVALS		ANALOG DEVICES	POWER BY LINEAR
ANALOG DEVICES HAS MADE A BEST EFFORT TO DESIGN A CIRCUIT THAT MEETS CUSTOMER SPECIFIED OPERATIONAL REQUIREMENTS. IT RESERVES THE CUSTOMER'S RESPONSIBILITY TO VERIFY PROPER AND RELIABLE OPERATION IN THE ACTUAL APPLICATION. COMPONENT SUBSTITUTION AND PRINTED CIRCUIT BOARD LAYOUT MAY SIGNIFICANTLY AFFECT CIRCUIT PERFORMANCE OR RELIABILITY. CONTACT ANALOG DEVICES APPLICATION ENGINEERS FOR ASSISTANCE.		PCR DES.	BY		
THIS CIRCUIT IS PROPRIETARY TO ANALOG DEVICES AND SUPPLIED FOR USE WITH ANALOG DEVICES PRODUCTS.		APP ENG.	BY	TITLE: SCHEMATIC POLYPHASE SINGLE OUTPUT DC/DC PSM MODULE REGULATOR	
				IC NO. LTM4681Y SKU NO. DC3082A-C	
				SCHEMATIC NO. AND REVISION: 710-DC3082A-C_REV01B	
				SIZE: N/A	DATE: Friday, March 26, 2021
				SHEET 2 OF 5	





U3
LTM4681Y

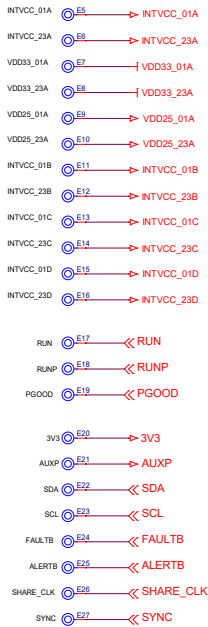
CUSTOMER NOTICE		APPROVALS		ANALOG DEVICES	POWER BY LINEAR
<p>ANALOG DEVICES HAS MADE A BEST EFFORT TO DESIGN A CIRCUIT THAT MEETS CUSTOMER SPECIFIED OPERATIONAL REQUIREMENTS. IT RESERVES THE CUSTOMER'S RESPONSIBILITY TO VERIFY PROPER AND RELIABLE OPERATION IN THE ACTUAL APPLICATION. COMPONENT SUBSTITUTION AND PRINTED CIRCUIT BOARD LAYOUT MAY SIGNIFICANTLY AFFECT CIRCUIT PERFORMANCE OR RELIABILITY. CONTACT ANALOG DEVICES APPLICATION ENGINEERS FOR ASSISTANCE.</p> <p>THIS CIRCUIT IS PROPRIETARY TO ANALOG DEVICES AND SUPPLIED FOR USE WITH ANALOG CODED PARTS.</p>		<p>PCR DES. <i>[Signature]</i></p> <p>APP ENG. <i>[Signature]</i></p>	<p>DATE: Friday, March 26, 2021</p>		
<p>TITLE: SCHEMATIC</p> <p>POLYPHASE SINGLE OUTPUT DC/DC PSM</p> <p>MODULE REGULATOR</p>				<p>SCHEMATIC NO. AND REVISION:</p> <p>IC NO. LTM4681Y 710-DC3082A-C</p> <p>SKU NO. DC3082A-C</p>	
<p>SIZE: N/A</p>				<p>SHEET 3 OF 5</p>	



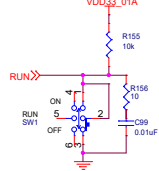
U4
LTM4681IY

CUSTOMER NOTICE		APPROVALS	
ANALOG DEVICES HAS MADE A BEST EFFORT TO DESIGN A CIRCUIT THAT MEETS CUSTOMER-SPECIFIED OPERATIONAL REQUIREMENTS. IT RESERVES THE CUSTOMER'S RESPONSIBILITY TO VERIFY PROPER AND RELIABLE OPERATION IN THE ACTUAL APPLICATION. COMPONENT SUBSTITUTION AND PRINTED CIRCUIT BOARD LAYOUT MAY SIGNIFICANTLY AFFECT CIRCUIT PERFORMANCE OR RELIABILITY. CONTACT ANALOG DEVICES APPLICATION ENGINEERS FOR ASSISTANCE.		PCR DES. <i>[Signature]</i>	APP ENG. <i>[Signature]</i>
THIS CIRCUIT IS PROPRIETARY TO ANALOG DEVICES AND SUPPLIED FOR USE WITH ANALOG DEVICES POWER.		 	
		www.analog.com Phone: (408)432-1900	
		TITLE: SCHEMATIC	
		POLYPHASE SINGLE OUTPUT DC/DC PSM	
		MODULE REGULATOR	
IC NO. LTM4681IY		SCHEMATIC NO. AND REVISION:	
SKU NO. DC3082A-C		710-DC3082A-C_REV01B	
SIZE: N/A		DATE: Friday, March 26, 2021	
		SHEET 4 OF 5	

TEST POINTS



MASTER RUN SWITCH

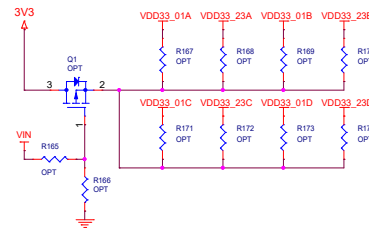


OPERATION at LOW VIN RANGE: 4.5V<VIN<5.75V

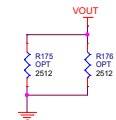


*SVIN_01[A,B,C,D], SVIN_23[A,B,C,D] are tied to VIN
 *RUNP is tied to GND (JP1 is set to OFF)
 *Disconnect all VIN_VBIAS[U1,U2,U3,U4] pins from VIN and short all VBIAS [A,B,C,D] to GND
 *Additional input electrolytic and ceramic caps are required

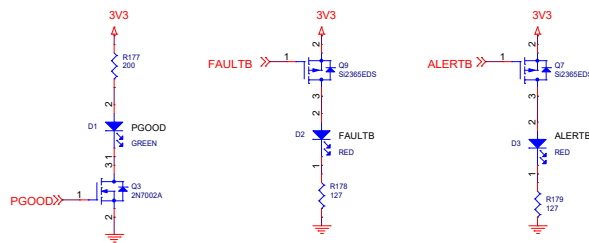
OPTIONAL SYSTEM 3V3 /100mA (PROGRAM with NO VIN)



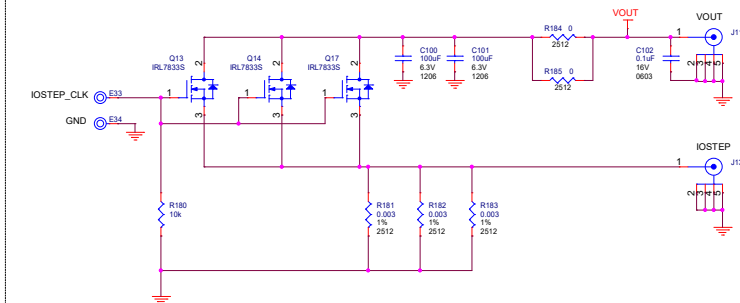
OPTIONAL BLEEDER Loads



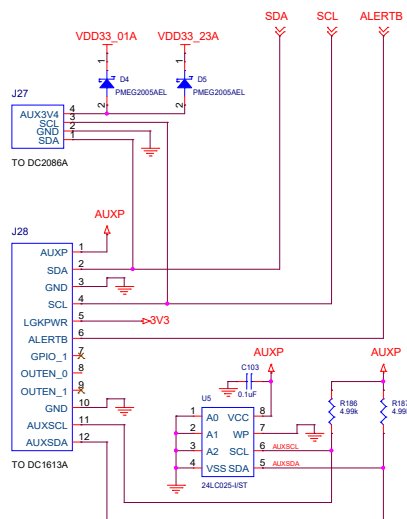
OPTIONAL LEDs INDICATION



OPTIONAL DYNAMIC LOAD STEP CIRCUIT



DC1613A CONNECTOR and OPTIONAL ONBOARD EEPROM IDENTIFICATION



CUSTOMER NOTICE		APPROVALS		ANALOG DEVICES		POWER BY LINEAR	
<p>ANALOG DEVICES HAS MADE A BEST EFFORT TO DESIGN A CIRCUIT THAT MEETS CUSTOMER-SUPPLIED SPECIFICATIONS. HOWEVER, IT REMAINS THE CUSTOMER'S RESPONSIBILITY TO VERIFY PROPER AND RELIABLE OPERATION IN THE ACTUAL APPLICATION. COMPONENT SUBSTITUTION AND PRINTED CIRCUIT BOARD LAYOUT MAY SIGNIFICANTLY AFFECT CIRCUIT PERFORMANCE OR RELIABILITY. CONTACT ANALOG DEVICES APPLICATIONS ENGINEERING FOR ASSISTANCE.</p>				PCB DES: <i>[Signature]</i>	www.analog.com		Phone: (408)432-1900
<p>THIS CIRCUIT IS PROPRIETARY TO ANALOG DEVICES AND SUPPLIED FOR USE WITH ANALOG DEVICES PARTS.</p>				APP ENG: <i>[Signature]</i>	<p>TITLE: SCHEMATIC POLYPHASE SINGLE OUTPUT DC/DC PSM // MODULE REGULATOR</p>		<p>SCHEMATIC NO. AND REVISION: 710-DC3082A-C_REV01B</p>
SIZE: N/A		DATE: Friday, March 26, 2021		SHEET 5		OF 5	