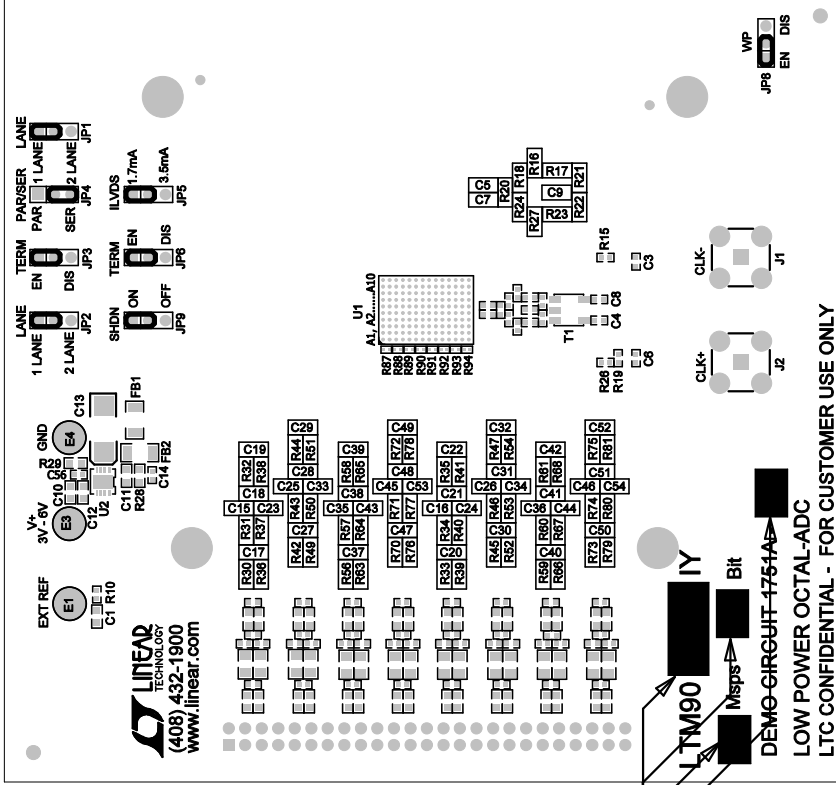
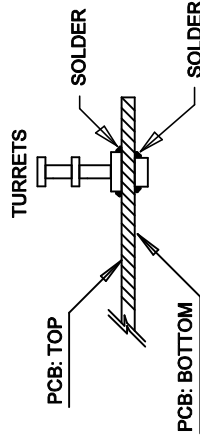


REVISION HISTORY			
ECO	REV	DESCRIPTION	APPR
-	2	PRODUCTION	CLARENCE M.
			DATE
			02/11/11

NOTES: UNLESS OTHERWISE SPECIFIED

1. WORKMANSHIP SHALL BE IN ACCORDANCE WITH IPC-A-610.
2. ASSEMBLY PROCESS SHALL INCLUDE: REFLOW SOLDER TOP SIDE SMD. MAXIMUM SOLDER TEMPERATURE IS 240 DEG. C.
3. PARTS TO OMIT WILL BE SPECIFIED ON THE BILL OF MATERIALS. LOCATIONS OF OMITTED PARTS SHALL BE FREE OF SOLDER. MASK THE SOLDER STENCIL WHERE SMT PARTS ARE OMITTED.
4. INSTALL SHUNTS AS SHOWN ON ASSY DRAWING.
5. DEPANELIZE BOARDS AFTER ASSEMBLY AND ROUTE-OUT THE BREAKOUT TABS ON FOUR SIDES OF THE BOARD EDGE.
6. DO NOT APPLY ANY KIND OF ASSEMBLY STAMP OR QA STAMP TO ANY BOARD.



7. MARK EACH LTC PART NUMBER AND ASSEMBLY TYPE WITH BLACK PERMANENT MARKER AS SHOWN IN TABLE BELOW:

ASSY	U1	BITS	Mbps
-A	LTM9011Y-14	14	125
-B	LTM9010Y-14	14	105
-C	LTM9009Y-14	14	80
-D	LTM9008Y-14	14	65
-E	LTM9007Y-14	14	40
-F	LTM9006Y-14	14	25



1630 MCCARTHY BLVD
MILPITAS, CA 95035
PH: (408)432-1900
www.linear.com
LTC CONFIDENTIAL -
FOR CUSTOMER USE ONLY

APPROVALS			
PCB DES.	APP ENG.	CLARENCE M.	SCALE = NONE
r8			
TITLE: TOP ASSEMBLY DRAWING			
LOW POWER OCTAL-ADC			
SIZE	IC NO.	LTM90XXTY-14 FAMILY	REV.
N/A		DEMO CIRCUIT 1751A	2
FILENAME: DC1751A-2.PCB			SHT 1 OF 2