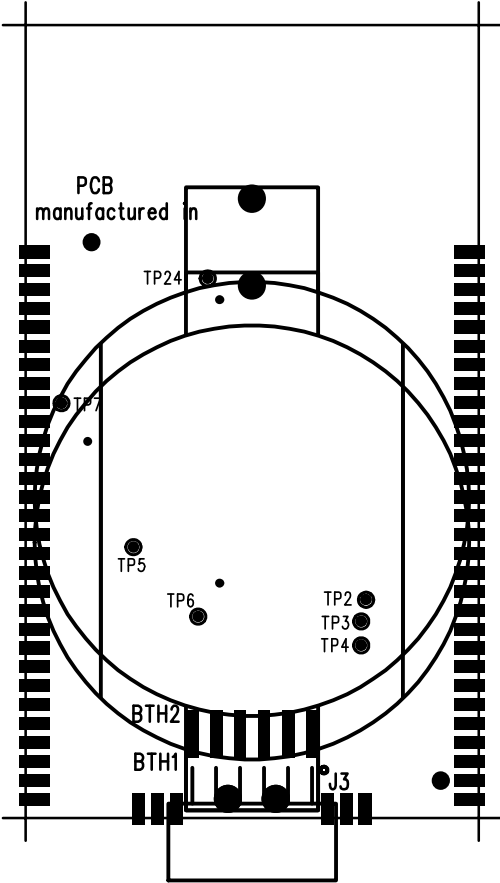
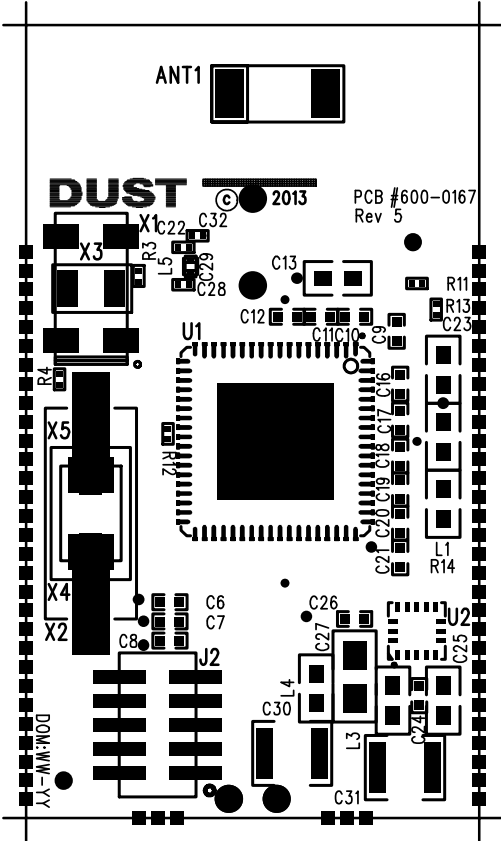


NOTES (UNLESS OTHERWISE SPECIFIED):

1. ASSEMBLE AND INSPECT IN ACCORDANCE WITH IPC STANDARD IPC-H-610D CLASS 2.
2. MAXIMUM PROTRUSION OF THE MOUSE BITES IS +0.010".
3. FINISHED ASSEMBLY TO BE FREE OF ALL SOLDER FLUX RESIDUES.
4. FINISHED ASSEMBLY TO BE SHIPPED IN APPROVED ANTI-STATIC PACKAGING.
5. ALL PROCEDURES REQUIRE ROHS-6. NO CLEAN SOLDER.
6. INSTALL RF SHIELD ON THE TOP SIDE BY INSERTING PINS INTO THE CORRECT MOUNTING HOLE POSITIONS.
  - a) SOLDER ALL FOUR CORNERS ON THE TOP SIDE.
  - b) CLEAN ALL FLUX RESIDUE FROM SOLDERED AREAS.
7. PLACE LABEL ON TOP OF THE SHIELD. FORMAT:
  - a) DUST PART NUMBER/REV.
  - b) U1 LOT NUMBER.
  - c) DATE OF MANUFACTURE (WW-YY).

R E V I S I O N S				
ECO	REV	DESCRIPTION	DATE	APPROVED
	1	INITIAL RELEASE	8-27-10	
1027	2	MINOR CLEAN-UP	5-16-12	
1178	3	ADDED L5	10-22-12	
1369	4	TENTED BOTTOM SIDE VIA'S	3-20-14	



SEE SEPARATE BOM, 700-0167

		UNLESS OTHERWISE SPECIFIED, DIMENSIONS ARE IN INCHES:  TOLERANCES ARE: FRACTIONS:      DECIMALS: .XX + .01 ANGLES: 0° 30" .XXX + .005  MATERIAL -  FINISH -  DO NOT SCALE DRAWING	APPROVALS	DATE	DUST NETWORKS			
			DRAWN BY: R.P.D.	8-27-10				
			CHECKED					
			ENGRG					
NEXT ASSY	USED ON		ISSUED		B	FSCM NO.	DWG NO.	REV.
APPLICATION			CONTRACT NO.				705-0167	4
					SCALE: NONE			SHEET 1 OF 1