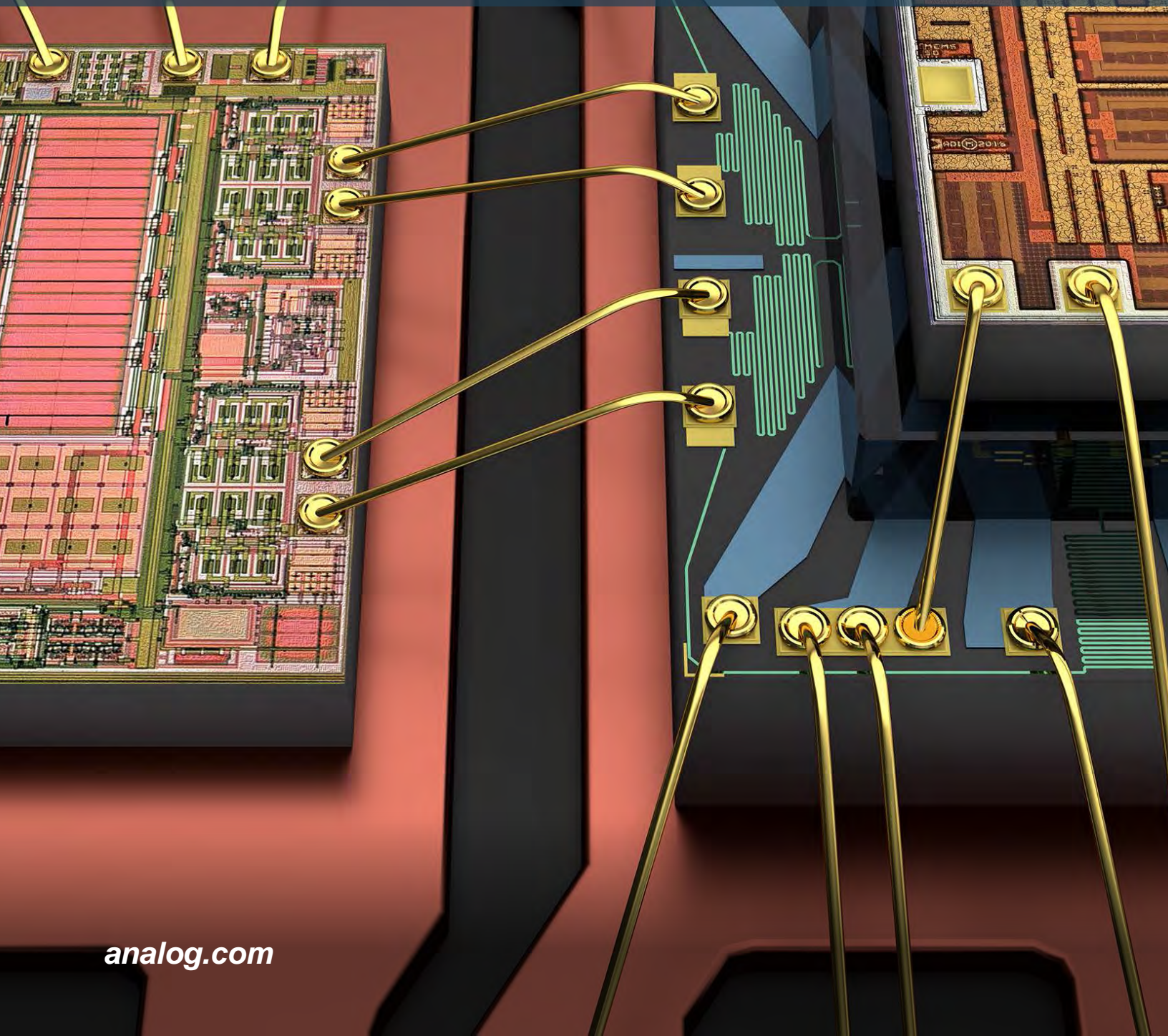


RELIABILITY REPORT



RELIABILITY DATA RADHARD DEVICES

6/28/2013

• OPERATING LIFE TEST

PACKAGE TYPE	SAMPLE SIZE	OLDEST DATE CODE	NEWEST DATE CODE	K DEVICE HOURS AT +125°C	NUMBER OF FAILURES
RH07	286	9418	9718	295.78	0
RH1009	1,830	9401	0508	3,755.50	0
RH101	192	0244	0330	194.54	0
RH1011	855	9529	0337	920.16	0
RH1013	938	9429	0548	2,188.92	1
RH1014	2,024	9408	0302	2,556.72	2
RH1016	161	0748	0748	72.48	0
RH1021	2,095	9406	0620	4,419.70	0
RH1034	77	0711	0711	77.00	0
RH1056	317	9825	0226	332.78	0
RH1078	397	9613	0327	762.99	2
RH108	514	9444	0451	629.44	0
RH1083	81	9601	9714	81.19	0
RH1084	104	9714	9721	106.49	0
RH1085	235	9723	0501	257.83	1
RH1086	844	9621	0539	863.68	1
RH117	1,516	9433	0527	1,654.24	0
RH118	480	9448	9806	506.30	0
RH1185	55	0826	0826	55.00	0
RH119	1,166	9502	0307	1,226.62	1
RH129	80	0338	0338	247.07	0
RH137	1,385	9433	0739	1,515.57	0
RH1498	80	0318	0318	87.28	0
RH1499	152	0318	0318	255.21	0
RH1573	56	0807	0807	56.00	0
RH1814	80	0414	0414	80.32	0
RH1959	80	0414	0414	80.32	0
RH27	458	9506	0942	728.51	0
RH3080	231	1034	1034	616.00	0
RH37	329	9506	0834	335.59	0
RH6200	77	1051	1051	4.64	0
	17,175			24,963.87	8



RELIABILITY DATA RADHARD DEVICES

- **OPERATING LIFE TEST**

- **FAILURE RATE = 0.75 FITS at +55°C,
60% Confidence Level
Assumes an Activation
Energy = 1.0 eV**

- **MTBF = 151,420 Years**

RELIABILITY DATA RADHARD DEVICES

• SUBGROUP B-6

PACKAGE TYPE	SAMPLE SIZE	OLDEST DATE CODE	NEWEST DATE CODE	CYCLES -65°C to +150°C	NUMBER OF FAILURES
H-08/H-10	1,216	9406	1217	117,050	0
H-39	640	9451	1220	109,000	0
H-46	827	9401	1222	298,700	0
H-52	50	9751	9840	5,000	0
J-08	345	9418	1040	34,500	0
J-14	180	9408	1131	18,000	0
K-03	764	9710	1221	76,400	0
W-10	1,154	9444	1201	115,400	0
W-14	999	9405	1206	99,900	0
	6,175			873,950	0

Note: J = CERDIP, H = HERMETIC, K = TO-3, W = FLATPACK

SUBGROUP B6 (CLASS S) MIL-STD-883
ELECTRICAL TEST +25°C / +125°C / -55°C
100 TEMP CYCLES -65°C TO +150°C
CONSTANT ACCELERATION 30kg Y1 AXIS
FINE & GROSS LEAK
ELECTRICAL TEST +25°C - COMPUTE DELTAS
ELECTRICAL TEST +25°C / +125°C / -55°C COMPUTE TEMPCO'S